

**SOUTH CAROLINA
DEPARTMENT OF REVENUE**

**Motor Fuel EDI
Implementation Guide**



Motor Fuel Online Reporting System

Revised

June 21, 2022

ANSI ASC X12 V .4030

**(Adapted from the FTA Electronic Combined
Reporting Methods Implementation Guide)**

Chapter 1 - Introduction.....	1-5
The Software Developer	1-6
General Information.....	1-6
Advantages.....	1-6
Contact Information.....	1-6
Understanding EDI.....	1-7
EDI 813 Version.....	1-7
EDI Filing Method.....	1-7
EDI File Naming Convention.....	1-8
EDI File Structure.....	1-9
Available EDI Filing.....	1-9
EDI Timely Filing	1-9
EDI Testing Procedures for Commercial Software Developers	1-10
EDI Testing Procedures for Motor Fuel Companies Developing their own Software In-House	1-11
EDI Production Filing Procedures	1-12
EDI Acknowledgments.....	1-13
FTA Review	1-13
Chapter 2 - Motor Fuels X12 Data Model.....	2-15
Chapter 3 – X12 Attribute and Separator Conventions.....	3-16
Chapter 4 – X12 EDI Envelope.....	4-17
Envelope Flows	4-17
Interchange Control Header Description.....	4-18
Functional Group Header Description	4-19
Functional Group Trailer Description.....	4-20
Interchange Control Trailer Description	4-20
Chapter 5 - 813 EDI Combined Reporting.....	5-21
ANSI ASC X12 – 813 EDI Standard.....	5-21
813 Structure	5-23
813 Map Flow	5-24
813 EDI Map.....	5-25
<i>Transaction Set Header Description.....</i>	<i>5-26</i>
<i>Transaction Set - Terminal Operator Report (TOR).....</i>	<i>5-33</i>
<i>Sequence ID Number Usage.....</i>	<i>5-33</i>
<i>Transaction Set - Supplier/Distributor Report (SDR).....</i>	<i>5-36</i>
<i>Transaction Set – Common Carrier Report(CCR).....</i>	<i>5-39</i>
<i>Summary Information.....</i>	<i>5-41</i>
<i>South Carolina Required Summary.....</i>	<i>5-44</i>
<i>Schedules.....</i>	<i>5-46</i>
<i>Transaction Set Trailer Description.....</i>	<i>5-54</i>
Chapter 6 – Acknowledgments	6-55
Appendix A - EDI Upload Procedures	A-56
Appendix B - Developer Registration.....	B-58
Appendix C - Schedules and Sub-Schedules.....	C-60
South Carolina Schedules.....	C-60
Appendix D - Product Codes	D-61
South Carolina Product Codes.....	D-61
Appendix E - Summary Codes / TIA Codes.....	E-62

Appendix F - Transaction Type Mode Codes.....	F-64
Appendix G - USA States, Canadian Provinces/Territories and Mexican States Codes...	G-65
Appendix H - Software Edits	H-67
Appendix I - Return and Schedule Formatting Requirements	I-69
Appendix J - Book Adjustments	J-71
Appendix K - Amended Returns	K-72
Appendix L - Sample EDI Files	L-74
Supplier (SDR)	L-74
Supplier Report (SDR) –Paper Example.....	L-81
Supplier Amendment	L-88
Supplier Amended (SDR) 813 – Paper Example.....	L-90
Supplier (SDR) – No Activity (Zero Return)	L-93
Supplier (SDR) – No Activity (Zero Return) – Paper Example.....	L-94
Terminal Operator Report (TOR)	L-96
Terminal Operator Report (TOR) – Paper Example	L-99
Transporter Report (CCR).....	L-104
Transporter Report (CCR) – Paper Example.....	L-107
Transporter Report (CCR) – No Activity (Zero Return)	L-113
Transporter Report (CCR) – No Activity (Zero Return) – Paper Example.....	L-114

References

ASC X12

The Accredited Standards Committee
Subcommittee - X12G – Government
Task Group 2 (X12G/TG2)
Tax Information Interchange Development
TIGERS
<http://www.x12.org>

ASC X12 Standards Manual

Publications Manager, Publications Department
Data Interchange Standards Association (DISA)
333 John Carlyle Street, Suite 600, Alexandria, VA 22314
Phone: 703-548-7005 Fax: 703-548-5738
Email: publications@disa.org
<http://www.disa.org>

FTA Uniformity Guide

Motor Fuel Tax Section, Uniformity Project
Federation of Tax Administrators (FTA)
444 N. Capitol St., NW, Washington, DC 20001
Contact: Cindy Anders-Robb
Phone: 307-632-4144 Fax: 307-632-3234
Email: cindy.anders-robb@taxadmin.org
<http://www.taxadmin.org>

It is recommended that you refer to the FTA Uniformity Guide to implement the Motor Fuels Uniformity methods.

Chapter 1 - Introduction

The South Carolina Department of Revenue (SCDOR) has upgraded the current EDI system for Motor Fuel User Fee returns. EDI files will now be required to be uploaded via the web using the following web address: zytax.dor.sc.gov. Filers will also have the no-cost filing option of entering return data directly into the Motor Fuel Online Reporting System at zytax.dor.sc.gov.

On July 1, 2012, specific product codes for gasohol and biodiesel were changed. They are as follows:

Gasohol- E01-E99 replaces “roll-up” product code 124 to reflect the percentage of fuel grade ethanol blended with gasoline. Pure, unblended fuel grade ethanol should be reported as E00, replacing product code 123.

Biodiesel- B01-B99 replaces “roll-up” product codes 284 and 170 to reflect the percentage of biodiesel blended with undyed diesel fuel. Pure, unblended biodiesel should be reported as B00.

Biodiesel- D01-D99 replaces “roll-up” product codes 284 and 171 to reflect the percentage of biodiesel blended with dyed diesel fuel. Pure unblended, dyed biodiesel should be reported as D00.

SC Code Section 12-28-1400(A) mandates that all Suppliers, Terminal Operators and Transporters file their Motor Fuel Tax returns “in the manner provided by the Department.” A D-155, Registration Application for Motor Fuel EDI, must be completed prior to participation in the program.

All Supplier reporting payments accompanying Motor Fuel transactions, **via web or EDI**, must be submitted electronically. You may pay using MyDORWAY, our free online tax portal, at MyDORWAY.dor.sc.gov. Another option for payment is the EFT Program for Motor Fuel, which is a separate program from the EDI Program. For further information regarding the EFT Program, see the EFT Program guide available at dor.sc.gov/tax/motor-fuel/eservices.

The Software Developer

Your place in the process is one of the most crucial. We at the SCDOR depend on you to develop software that will meet our needs in terms of edits and proper layout. The users of the software count on you to develop a user-friendly package that will fit their business needs and ensure accurate translation of their data.

To help you in every way possible, this handbook gives you contacts if you have questions or need additional information, the current map, testing procedures that we require you to use, record layouts/edits to define the framework of the software, and a sample mapping of a supplier, terminal operator, and transporter Motor Fuel User Fee Return.

General Information

Electronic Data Interchange (EDI) is the electronic exchange of business documents from one company's computer to another company's computer in machine-processable formats. The direct, computer-to-computer exchange of business information reduces the expense associated with paper processing, as well as the costs, errors and time delays associated with data entry. Companies in industries of all kinds have found that EDI makes tremendous economic sense. Government agencies such as the SCDOR naturally see the value in reducing the paper-intensive component of Motor Fuel Taxes by implementing EDI.

Advantages

Advantages of participating in Motor Fuel EDI include:

- Eliminates paperwork
- Eliminates postal delays
- EDI files imported to the SC system will process from import to filing without requiring any user input
- Filer will now have the ability to modify any tax returns that have errors from the imported EDI file or reload a corrected EDI file
- Email notifications sent to the filer if the file fails for any reason
- Email notifications sent to the filer when the tax return is filed
- Computerized filing provides an avenue for the SCDOR to more accurately track fraud
- Comprehensive audit trail for the return

This EDI Implementation guide follows version 4030 of the EDI ANSI ASC X12 standards. This guide's purpose is to assist you in implementing and filing EDI for motor fuel returns and reports.

Contact Information

Help Desk	803-896-1715
Email	XML@dor.sc.gov
Fax	803-896-1779

Understanding EDI

EDI is used extensively in industry. For example, the retail and manufacturing industries cut purchase orders, send invoices, process shipping notifications, and make payments; all electronically. The time saved and accuracy gained using EDI gives businesses a competitive advantage, reducing lead-time, and vastly reducing data entry errors. It also reduces the need to store reams of paper documents for future reference.

EDI may seem complex, but once the basics are understood, the concept is really quite simple. As stated earlier, EDI is a method to electronically exchange business documents using a standard format. To facilitate this exchange of documents, two things are needed. First, the user (or trading partner) needs a method to send and receive electronic documents. Second, the user needs software to translate schedules and user fee returns into the standard EDI format.

EDI 813 Version

South Carolina is using the ANSI ASC X12 Version Release 004030 EDI standards for the EDI 813 (Electronic Filing of User Fee Return Data) transaction set. Many states have implemented, or are planning on implementing, the EDI 813 for motor fuel user fee filing. Previous releases of the EDI 813 transaction set allowed for individual state variations in EDI filing. Version 4030 promotes uniformity in motor fuel user fee filing. As states migrate to the 4030 version, filers will be able to create a more generic EDI map, reducing the effort needed to track individual state variations.

EDI Filing Method

The SCDOR will accept EDI files through the Internet. For more information about this method, see the section on Internet Filing Procedures (Appendix A).

EDI File Naming Convention

The EDI file should be named using the following conventions:

EDI File Naming will follow the format of SCccyyymmAAAAxnn.test

- “SC” is the state abbreviation
- “ccyyymm” is reporting year and month
- “AAAAA” is a state assigned company name abbreviation
- “X” denotes “O” original or “A” amended
- “nn” denotes sequence number (“03” is the third amended filing)
- “test” or “prod” to indicate user filing status (“dev” to be used by software developers)

Examples:

SC201603PETRCO01.test

- “SC” for South Carolina
- “2016” for the year the return is being filed
- “03” for the month the return is being filed
- “PETRC” represents Petroleum Company and was assigned by the SCDOR
- “O” for Original filing
- “01” for first transmission of the original filing
- “test” indicates the user is sending a test EDI file

SC201603PETRCA02.prod

- “SC” for South Carolina
- “2016” for the year the return is being filed
- “03” for the month the return is being filed
- “PETRC” represents Petroleum Company and was assigned by the SCDOR
- “A” for Amended filing
- “02” for the second amended filing
- “prod” indicates the user is sending a production EDI file

SC201603PETRCA01.dev

- “SC” for South Carolina
- “2016” for the year the return is being filed
- “03” for the month the return is being filed
- “PETRC” represents Petroleum Company and was assigned by the SCDOR
- “A” for Amended filing
- “01” for first transmission of the original filing
- “dev” indicates the software developer is sending a developer created EDI file

The SCDOR prefers to receive all returns (the Supplier Return, Terminal Operator Reports, and Transporter Report) in a single file (using separate 813 Transaction Sets). However, the filer can choose to send the Supplier Return, Terminal Operator Reports, and Transporter Report in separate files. If the filer sends the Supplier Return and Terminal Operator Report and Transporter Report in separate files, the first original file transmitted will be sequenced 01, the second original file will be sequenced 02. For example, using separate files, the original Supplier Return if sent first, would be named using sequence “01”, (i.e. “SC201603PETRCO01.test”), the Terminal Operator Returns would be named using sequence “02”, (i.e., “SC201603PETRCO02.test”), and the Transporter Report would be named using sequence “03”, (i.e., “SC201603PETRCO03.test”).

Original returns rejected for EDI syntax errors are NOT to be resubmitted as Amended returns. They should carry the “O” for original filing and the next sequence filing number.

Example: Original file rejected -- SC201603NAMESO01.test
Resubmit named -- SC201603NAMESO02.test

EDI File Structure

Each 813 (return) must be submitted with its own ST loop (ST segment through SE segment). Multiple ST-SE loops can be submitted under one ISA envelope or each can be sent under a separate ISA envelope. Please remember, the ISA15 controls the test/production indicator; test and production returns cannot be combined under the same ISA envelope.

Available EDI Filing

Initially, the following returns may be filed via EDI:

- L-2098 - Motor Fuel Terminal Operator Monthly Report
- Supporting Schedules for L-2098
 - L-2099 – Terminal Operator Schedule of Receipts
 - L-2100 – Terminal Operator Schedule of Disbursements
- L-2119 - Motor Fuel Suppliers Monthly User Fee and Calculation
- Supporting Schedules for L-2119
 - L-2102 – Supplier Schedule of State Diversion Corrections
 - L-2103 – Supplier Schedule of Terminal Rack Removals
 - L-2122 – Supplier Schedule of User Fee Paid Receipts
- L-2176 - Motor Fuel Transporter Monthly Report
- Supporting Schedule for L-2176
 - L-2185 – Motor Fuel Transporter Schedule

Note: For those filers already filing the Terminal Operator Report or Terminal Supplier Return as production returns, the Transporter report must be filed separately as a test file until notified by the SCDOR that you've been approved to move to a production status.

EDI Due Dates

The due date for filing your Motor Fuel User Fee Return and Schedules via EDI is the 22nd day of the month following the month of activity. This means the EDI filing must be both transmitted and received by the SCDOR by the 22nd day of the month.

If a return due date falls on a holiday or weekend, the User Fee Return is due no later than the first business day after the holiday or weekend. Timely returns are based on the date of receipt of the electronic return by the SCDOR.

HOLIDAY SCHEDULE

New Year's Day	January 1
Martin L. King Day	Third Monday in January
George Washington's Birthday (President's Day)	Third Monday in February
Confederate Memorial Day	May 10
Memorial Day	Last Monday in May
Independence Day	July 4
Labor Day	First Monday in September
Veteran's Day	November 11
Thanksgiving Day	Fourth Thursday in November
Day After Thanksgiving	Friday following Thanksgiving Day
Christmas Eve	December 24
Christmas Day Day After	December 25
Christmas	December 26

Note: When a legal holiday falls on a Sunday, it will be observed on the following Monday.
When a legal holiday falls on a Saturday, it will be observed on the preceding Friday.

EDI Testing Procedures for Commercial Software Developers

All developers must register, test, and complete the certification process with the SCDOR prior to the use of their software for live transmissions by any South Carolina users.

1. Complete the D-154, Developer Application, in this guide prior to setting up your communication link. Email or fax your application to the SCDOR.
2. Upon receiving your application, you will be contacted by the SCDOR via email and given a userid and temporary password to log into the Motor Fuel website. At this time, you will log in to the system and create your password for the testing phase. You will also receive a software provider code, which will be used to populate the BTI12 field.
3. Contact us when you are ready to test with the SCDOR. A test package containing several test scenarios will be provided to you. If your software will not offer the Supplier, Terminal Operator, and Transporter user fee filings, then you will only need to test the filing type you offer. If you have a client that is already filing with SC using the web method, you can test using their production file.

NOTE: Due to the fluctuation in federal interest rates, calculation of Penalty (TIA 5009) and Interest (TIA 5008) are NOT part of the certification process in SC and you are not required to maintain the penalty and interest rates, although your company may choose to have penalty and interest calculations as part of its package. **The summary fields for Penalty and Interest are required in the EDI map. If not calculated, create the TIAs with zero amounts.**

4. Whenever you send a file to the SCDOR, the SC Motor Fuel Online Reporting System will automatically notify the filer via email once the file processes and/or if errors occur. The user needs to make sure that all contact information is up to date so the notification will be received. If you have a problem with any aspect of your transmission, call the Administrative Special Projects Help Desk at 803-896-1715.
5. After receiving your initial test, we will notify you of the results, continued testing may be required. Keep in mind that it is not uncommon to repeat this phase several times.
6. After you have successfully completed these steps, you will be notified by email that you can make your software available to users.

Whenever you make a significant change to your software package, you should run another test with us to ensure accuracy and reliability for your users.

EDI Testing Procedures for Motor Fuel Companies Developing their own Software In-House

1. Complete the D-155, Registration Application, in the User's Program Guide prior to setting up your communication link. Email or fax your application to the SCDOR.
2. In the Tax Software Vendor field of the D-155, please write "In-House."
3. Contact the Motor Fuel Section at MotorFuelTax@dor.sc.gov for information about submitting paper returns until testing is completed.
4. Upon receiving your application, you will be given a username and a temporary password to log into the Motor Fuel website. At that time, you will login to the system and create your password. You will use these to access our website during the testing phase.

Special Notes:

- a. Populate your BTI12 with "SCTRUEX12".
 - b. Due to the fluctuation in federal interest rates, calculation of Penalty (TIA 5009) and Interest (TIA 5008) are NOT part of the certification process in SC and you are not required to maintain the penalty and interest rates, although your company may choose to have penalty and interest calculations as part of its package. **The summary fields for Penalty and Interest are required in the EDI map. If not calculated, create the TIAs with zero amounts.**
5. Please submit a previous month's return data for your test return. If your company files the supplier, terminal operator, and transporter returns, you are required to submit all in the testing phase.
 6. Whenever you send a file to the SCDOR, the SC Motor Fuel Online Reporting System will automatically notify the filer via email once the file processes and/or if errors occur. The user needs to make sure that all contact information is up to date so the notification will be received. If you have a problem with any aspect of your transmission, call the Administrative Special Projects Help Desk at 803-896-1715.
 7. After receiving your initial test, we will notify you of the results; continued testing may be required. Keep in mind that it is not uncommon to repeat this phase several times.
 8. After successfully completing all phases, you will be notified by email that you may begin filing in production.

Whenever you make a significant change to your software package, you should run another test with us to ensure accuracy and reliability for your users.

EDI Production Filing Procedures

INSTRUCTIONS FOR FILING A PRODUCTION RETURN

NOTE: If the ISA15 flag in the 813 transaction differs from the file-naming extension, it will be considered a test filing, regardless of the file-name.

Software Developers

Do NOT use these instructions during the software certification process. These instructions are to be used by your clients when they begin submitting their production returns to the SCDOR. **These are provided here for informational purposes only.**

Following are the steps that will need to be followed when filing a production return:

1. Before filing a production return, your company must have completed a successful test return. See EDI Testing Procedures for further instruction on test filings.
2. After completing the testing phase, you will be notified in writing when you are to begin production filing for Motor Fuel EDI.
3. Paper returns must not be sent to the SCDOR after you begin your production EDI filings.
4. Once you begin the EDI production process, your company must file all production returns by EDI. If you have problems that will prevent you from filing by EDI, call the Administrative Special Projects HelpDesk at 803-896-1715 immediately. Do NOT send paper without contacting the SCDOR.
5. To file a production return, you must change your filing status from “Test” to “Production”.
6. Follow the steps listed in Appendix A (Internet Filing Procedures) to load your file onto our website.
7. The SC Motor Fuel Online Reporting System will automatically notify the filer via email once the file processes and/or if errors occur. The user needs to make sure that all contact information is up to date so the notification will be received.
8. If your company changes its filing sources (i.e. changes software vendor or moves to in-house software), your company must continue to file through the old source while testing through the new source. Your company can NOT discontinue EDI while changing filing sources.

EDI Acknowledgments

The SC Motor Fuel Online Reporting System will automatically notify the filer via email once the file processes and/or if errors occur. **The user needs to make sure that all contact information is up to date so the notification will be received.**

FTA Review

This guide which included Terminal Operator and Terminal Supplier mapping was presented to the FTA Uniformity Committee for review in July 2003 and approved in September 2003.

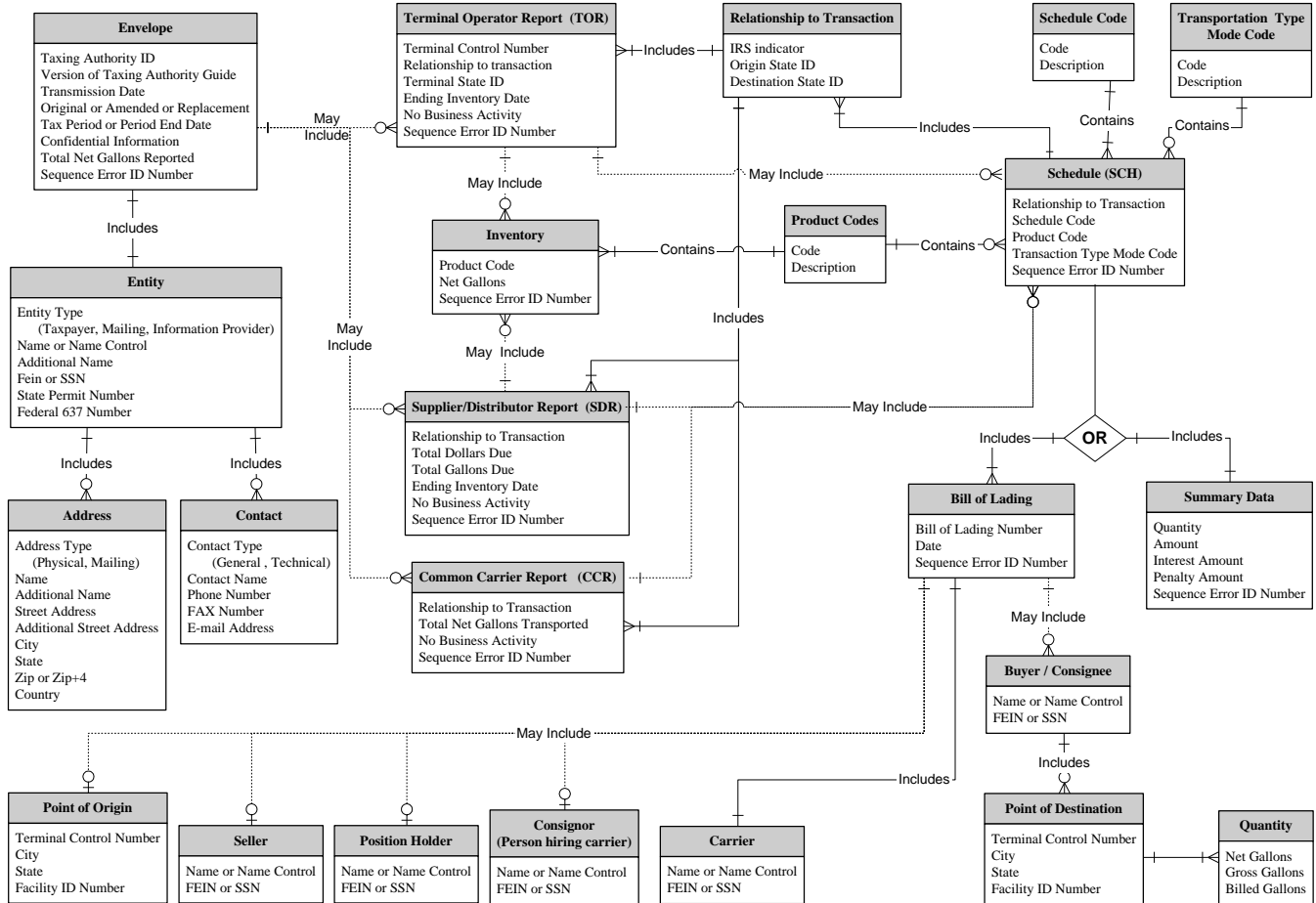
In February 2006, Transporter (Common Carrier) mapping was made available under 2003 guideline standards, keeping the Transporter mapping consistent with existing Terminal Operator and Terminal Supplier mapping. Revisions to the guide to include Transporter mapping were presented to FTA Uniformity Committee for review in February 2006.

NOTE:

To stay consistent with the Uniformity Committee and as not to alter any of the uniformity language, the references to “tax” and “taxpayer” vs. “user fee” and “user” have not been changed on pages 1-12 through 6-56 and E-71 through G-75.

Chapter 2 - Motor Fuels X12

Data Model



Chapter 3 – X12 Attribute and Separator Conventions

Attributes

Attribute	Definition
Data Element Type	<p>Nn – Numeric Numeric type data element is symbolized by the two-position representation (Nn). N indicates a numeric, and n indicates the decimal places to the right of a fixed, implied decimal point. N0 (N Zero) is a numeric with no decimal places.</p> <p>R – Decimal (Real) The decimal point is optional for integer values, but is required for fractional values. For negative values, the leading minus (-) sign is used. Absence of this sign indicates a positive value. The plus (+) sign should not be transmitted.</p> <p>ID – Identifier An identifier data element must always contain a value from a predefined list of values that is maintained by ASC X12 or by other bodies that are recognized by ASC X12.</p> <p>AN – String A string (Alphanumeric) is a sequence of any characters from the basic or extended character sets. It must contain at least one non-space character. The significant characters must be left justified. Leading spaces, if any, are assumed to be significant. Trailing spaces should be suppressed.</p> <p>DT – Date Format for the date type is CCYYMMDD. CC is the century digits of the year (ex. 19, 20). YY is the last two digits of the year (00-99), MM is the numeric value of the month (01-12), and DD for the day (01-31).</p> <p>TM – Time Format for the time type is HHMMSS, expressed in 24-hour clock format. HH is the numeric value for hour (00-23), MM for minute (00-59), and SS for second (00-59).</p>
Requirement Designator	<p>Defines how the data element is used in a segment.</p> <p>M Mandatory data element - This element is required to appear in the segment.</p> <p>O Optional data element - The appearance of this data element is at the option of the sending party or is based on a mutual agreement of the interchange parties.</p> <p>X Relational data element - Relational conditions may exist between two or more data elements. If one is present the other/s is required. The relational condition is displayed under the Syntax Noted of the X12 Standards.</p>
Data Element Length	The number of character positions assigned to a data element. Example: Data element length of 2/10. You must have at least 2 characters but no more than 10 characters for this element (minimum of 2/ maximum of 10).
Semantic Note Designator	<p>Z – Designator A data element within a segment may have a designator (Z) that indicates the existence of a semantic note. Semantic notes are considered part of the standard. If a condition designator and a semantic note both affect a single data element, the condition will appear first, separated from the semantic note designator by a vertical bar (). The number 00 to the left of the comment identifies semantic notes that are general in nature.</p>

Separator Requirements

Type	ASCII Value	EBCDIC Value	Character	Character Name
Repetition Separator	7C	4F		Pipe
Segment Terminator	5C	E0	\	Back Slash
Element Separator	7E	A1	~	Tilde
Sub-element Separator	5E	5F	^	Caret
Padding Character	20	40	Space	Space

Chapter 4 – X12 EDI Envelope

Envelope Flows

- ISA Interchange Control Header
- GS Functional Group Header
 - 820 Transaction Set (ACH Payment) Max 1
820 details are defined in this guide.
- GE Functional Group Trailer
- GS Functional Group Header
 - 813 Transaction Set (Combined Reporting) Max >1
813 details are defined in this guide.
- GE Functional Group Trailer
- IEA Interchange Control Trailer

- ISA Interchange Control Header
- GS Functional Group Header
 - 826 Transaction Set (Tax Information Exchange) Max 1
826 details are defined in this guide.
- GE Functional Group Trailer
- IEA Interchange Control Trailer

- ISA Interchange Control Header
- GS Functional Group Header
 - 151 Transaction Set (Electronic Filing of Tax Return Data Acknowledgement) Max 1
151 details are defined in this guide.
- GE Functional Group Trailer
- IEA Interchange Control Trailer

- ISA Interchange Control Header
- GS Functional Group Header
 - 997 Transaction Set (Functional Acknowledgement) Max 1
997 details are defined in this guide.
- GE Functional Group Trailer
- IEA Interchange Control Trailer

Key:

Not Used

Syntax Notes

FTA Notes

SC Notes

Struck-out Text

Not used: no data to transmit
Note: Notes defined by X12 Standards
Note: Notes defined by FTA Uniformity
Note: Notes defined by the South Carolina Department of Revenue to further clarify the Department's requirements
Text, elements or entire segments that are struck out (example), are part of the Uniform map, but are not used by South Carolina

Interchange Control Header Description

Interchange Segment								(Required)
Element ID	Elem Ref #	Sub-Ele Ref#	Field Status	Field Name	Field Type	Length		Field Description
						Min.	Max.	
ISA01	I01		M	Authorization Information Qualifier	ID	2	2	“00” = No Authorization Information Present (No Meaningful Information In Isa02)
ISA02	I02		M	Authorization Information	AN	10	10	Information used for additional identification or authorization of the interchange sender or the data in the interchange. Enter 10 Spaces
ISA03	I03		M	Security Information Qualifier	ID	2	2	“00” = No Security Information Present (No Meaningful Information In ISA 04)
ISA04	I04		M	Security Information	AN	10	10	This is used for identifying the security information about the interchange sender or the data in the interchange. Enter 10 spaces.
ISA05	I05		M	Interchange ID Qualifier	ID	2	2	“ZZ” = ID qualifier published by the sender used to designate the sender ID element being qualified.
ISA06	I06		M	Interchange Sender ID	AN	15	15	Filer FEIN followed by 6 spaces
ISA07	I05		M	Interchange ID Qualifier	ID	2	2	“ZZ” = ID qualifier published by the receiver used to designate the receiver ID element being qualified.
ISA08	I07		M	Interchange Receiver ID	AN	15	15	‘SCDOR’ followed by 10 spaces
ISA09	I08		M	Interchange Date	DT	6	6	“YMMDD” = Date Of The Interchange
ISA10	I09		M	Interchange Time	TM	4	4	“HHMM” = Time Of The Interchange
ISA11	I65		M	Repetition Separator		1	1	“ ” = EBCDIC - 4F HEX ASCII - 7C HEX
ISA12	I11		M	Interchange Control Version Number	ID	5	5	“00403”
ISA13	I12		M	Interchange Control Number	N0	9	9	The interchange control number uniquely identifies the interchange data to the sender. The sender assigns this number.
ISA14	I13		M	Acknowledgment Requested	ID	1	1	“0” = No Acknowledgment Required
ISA15	I14		M	Usage Indicator	ID	1	1	“P” = Production Data “T” = Test Data
ISA16	I15		M	Component Sub-Element Separator		1	1	“^” = EBCDIC - 5F HEX ASCII - 5E HEX
ISA~00~		~00~		~ZZ~123456789	~ZZ~SCDOR			~010523~0931~ ~00403~00000001~0~T~^\\
Syntax Notes:		None						
FTA Note:		ISA09 does not include the century based on the ANSI ASC X12 Standard.						

Electronic Signature Method:

The following example illustrates how the ISA01-ISA04 can serve as an electronic signature.

- ISA01 is 03 (zero three). ISA01 qualifies ISA02 as an authorization code.
- ISA02 is the ten-digit authorization code provided by the taxing authority. This code, in conjunction with the ten-digit password in ISA04, will represent your signature that is affixed to a trading partner agreement
- ISA03 is 01 (zero one). ISA03 qualifies ISA04 as a security password
- ISA04 is the ten-digit password that is created by the trading partner and entered on the trading partner agreement. This password, in conjunction with the ISA02 authorization code, will represent your signature that is established on the trading partner agreement

Functional Group Header Description

Functional Group Segment								(Required)
Element ID	Elem. Ref #	Sub-Element Ref#	Field Status	Field Name	Field Type	Length		Field Description
						Min.	Max.	
GS01	479		M	Functional Identifier Code	ID	2	2	“TF” for 813 Transaction Set “FA” for 997 Transaction Set
GS02	142		M	Application Sender’s Code	AN	2	15	Code identifying party sending transmission. Code assigned by sender and agreed to by trading partner. Filer FEIN
GS03	124		M	Application Receiver’s Code	AN	2	15	Code identifying party receiving transmission. Code assigned by receiving and agreed to by trading partner. ‘SCDOR’
GS04	373		M/Z	Date	DT	8	8	“CCYYMMDD” = Date
GS05	337		M/Z	Time	TM	4	8	“HHMMSSDD” = Time
GS06	28		M/Z	Group Control Number	N0	1	9	Assigned number originated and maintained by the sender.
GS07	455		M	Responsible Agency Code	ID	1	2	“X” = ASC X12
GS08	480		M	Version/ Release / Industry Identifier Code	AN	1	12	“004030”
GS~TF~123456789~SCDOR~20010523~0931~1101~X~004030 \								
Syntax Notes:		None						
FTA Note:		None						

813 Electronic Filing of Tax/User Fee Return Data – see page 5-21

997 Functional Acknowledgement – see page 6-55

Functional Group Trailer Description

Functional Group Segment (Required)								
Element ID	Elem Ref #	Sub-Ele Ref#	Field Status	Field Name	Field Type	Length		Field Description
						Min.	Max.	
GE01	97		M	Number Of Transaction Sets Included	N0	1	6	Count of transaction sets within this GS/GE.
GE02	28		M/Z	Group Control Number	N0	1	9	The data interchange control number in the trailer must be identical to the same data element in the associated functional header (GS06).
GE~1~1101\								
Syntax Notes: None								
FTA Note: None								

Interchange Control Trailer Description

Interchange Segment (Required)								
Element ID	Elem Ref #	Sub-Ele Ref #	Field Status	Field Name	Field Type	Length		Field Description
						Min.	Max.	
IEA01	116		M	Number Of Included Functional Groups	N0	1	5	Count of Function Groups Within This ISA/IEA.
IEA02	112		M	Interchange Control Number	N0	9	9	The interchange number in the trailer must be identical to the same data element in the associated interchange header (ISA13).
IEA~1~00000001\								
Syntax Notes: None								
FTA Note: None								

Chapter 5 - 813 EDI Combined Reporting

ANSI ASC X12 – 813 EDI Standard

RELEASE • 004030

TRANSACTION SET TABLES • 813

813 Electronic Filing of Tax Return Data

FUNCTIONAL GROUP: TF

This Draft Standard for Trial Use contains the format and establishes the data contents of the Electronic Filing of Tax Return Data Transaction Set (813) for use within the context of an Electronic Data Interchange (EDI) environment. This transaction set can be used by tax filers to electronically file tax returns with a federal, state, or local taxing authority and which may initiate payments related to the tax return.

Table 1

NOTE	POS.NO.	SEG.ID	NAME	REQ.DES.	MAX USE	LOOP REPEAT
	0100	ST	Transaction Set Header	M	1	
	0200	BTI	Beginning Tax Information	M	1	
	0300	DTM	Date/Time Reference	M	10	
N	0400	TIA	Tax Information and Amount	O	1000	
	0430	REF	Reference Identification	O	10	
	0450	TRN	Trace	O	1000	
	0470	BPR	Beginning Segment for Payment Order/Remittance Advice	O	1000	
LOOP ID - N1						>1
N	0500	N1	Name	O	1	
	0600	N2	Additional Name Information	O	2	
	0700	IN2	Individual Name Structure Components	O	10	
	0800	N3	Address Information	O	2	
	0900	N4	Geographic Location	O	1	
	1000	PER	Administrative Communications Contact	O	2	

Table 2

NOTE	POS.NO.	SEG.ID	NAME	REQ.DES.	MAX USE	LOOP REPEAT
LOOP ID - TFS						100000
	0100	TFS	Tax Form	O	1	
	0200	REF	Reference Identification	O	10	
	0300	DTM	Date/Time Reference	O	10	
	0400	MSG	Message Text	O	1000	
LOOP ID - N1						>1
N	0500	N1	Name	O	1	
	0600	N2	Additional Name Information	O	2	
	0700	IN2	Individual Name Structure Components	O	10	
	0800	N3	Address Information	O	2	
	0900	N4	Geographic Location	O	1	
LOOP ID - TIA						100000
N	0920	TIA	Tax Information and Amount	O	1	
	0940	DTM	Date/Time Reference	O	10	
	0960	MSG	Message Text	O	1000	
LOOP ID - FGS						100000
	1000	FGS	Form Group	O	1	
	1100	REF	Reference Identification	O	10	
	1200	DTM	Date/Time Reference	O	10	
LOOP ID - N1						>1
N	1300	N1	Name	O	1	

DECEMBER 1999

1

¹ Data Interchange Standards Association, Inc. (DISA)

813 • TRANSACTION SET TABLES

RELEASE • 004030

1400	N2	<u>Additional Name Information</u>	O	2		
1500	IN2	<u>Individual Name Structure Components</u>	O	10		
1600	N3	<u>Address Information</u>	O	2		
1700	N4	<u>Geographic Location</u>	O	1		
LOOP ID - TIA					10000	
N	1800	TIA <u>Tax Information and Amount</u>	O	1		
	1900	DTM <u>Date/Time Reference</u>	O	10		
	2000	MSG <u>Message Text</u>	O	1000		

Table 3

NOTE	POS.NO.	SEG.ID	NAME	REQ.DES.	MAX USE	LOOP REPEAT
	0100	SE	Transaction Set Trailer	M	1	
Changes loop repeat value in table/positions 1/0500, 2/0500 and 2/1300.						6 205299

NOTES

- 1/0400 The TIA segment allows for tax information and amounts associated with the entire filing. At least one occurrence of the TIA segment must be present in the transaction set, either in Table 1 or Table 2.
- 1/0500 This N1 loop reflects names and addresses associated with the entire filing.
- 2/0500 This N1 loop reflects names and addresses associated with a particular tax form (TFS).
- 2/0920 At least one occurrence of the TIA segment must be present in the transaction set, either in Table 1 or Table 2.
- 2/1300 This N1 loop reflects names and addresses associated with a particular subset of a tax form.
- 2/1800 At least one occurrence of the TIA segment must be present in the transaction set, either in Table 1 or Table 2.

813 Structure

Struck-out Text

Text, elements or entire segments that are struck out (example), are part of the Uniform map, but are not used by South Carolina

Table1

Pos No	Uniform 813 Map	Header
0100	ST	Transaction Set Header
0200	BTI	Identify Tax Agency Information
0300	DTM	Tax Filing Period
0400	TIA	Version of Taxing Authority's Implementation Guide
0400	TIA	Confidential Information
0400	TIA	Total Net Reported
0430	REF	Sequence ID Number
0500	N1	Taxpayer Name Detail
0600	N2	Additional Taxpayer Name Detail
0800	N3	Address Detail
0900	N4	City, State, Zip Code Detail
1000	PER	General Contact Person
1000	PER	EDI Contact Person
0500	N1	Mailing Name Detail
0600	N2	Additional Mailing Name Detail
0800	N3	Mailing Address Detail
0900	N4	Mailing City State Zip Code Detail

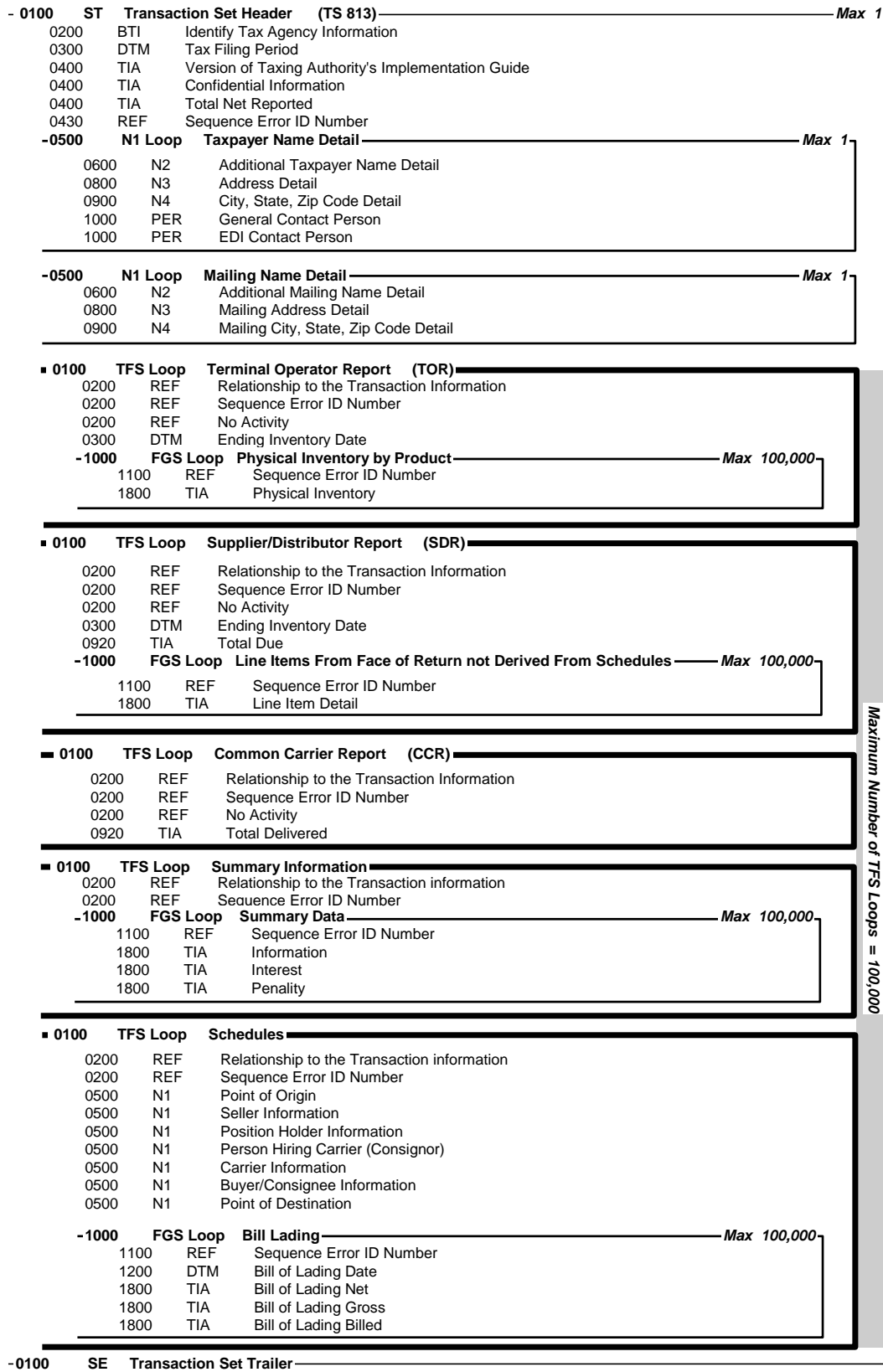
Table 2

Pos No	Uniform 813 Map	TOR	SDR	CCR	SUM	SCH
0100	TFS	Terminal Operator Report	Supplier/Distributor Report	Common Carrier Report	Summary Information	Schedules
0200	REF	Relationship to the Transaction	Relationship to the Transaction	Relationship to the Transaction	Relationship to the Transaction	Relationship to the Transaction
0200	REF	Sequence ID Number	Sequence ID Number	Sequence ID Number	Sequence ID Number	Sequence ID Number
0200	REF	No Activity	No Activity	No Activity		
0300	DTM	Ending Inventory Date	Ending Inventory Date			
0500	N1					Point of Origin
0500	N1					Seller Information
0500	N1					Position Holder Information
0500	N1					Person Hiring Carrier (Consignor)
0500	N1					Carrier Information
0500	N1					Buyer/Consignee Information
0500	N1					Point of Destination
0920	TIA		Total Due	Total Delivered		
1000	FGS	Physical Inventory by Product	Physical Inventory by Product		Summary Data	Bill of Lading
1100	REF	Sequence ID Number	Sequence ID Number		Sequence ID Number	Sequence ID Number
1200	DTM					Bill of Lading Date
1800	TIA	Physical Inventory	Physical Inventory		Information	Bill of Lading Net
1800	TIA				Interest	Bill of Lading Gross
1800	TIA				Penalty	Bill of Lading Billed

Table 3

Pos No	Uniform 813 Map	Trailer
0100	SE	Transaction Set Trailer

813 Map Flow



Maximum Number of TFS Loops = 100,000

813 EDI Map

FTA Motor Fuel Tax Section Uniformity Committee

The Combined Reporting map is based on Uniform Forms adopted by the Uniformity Committee of the Motor Fuel Tax Section of the Federation of Tax Administrators. This map is consistent with ANSI ASC X12 version 4030 standards. Any taxing authority implementing EC programs is asked to utilize this document when mapping their motor fuel tax returns/reports.

Key:

Not Used	Not used: no data to transmit
Syntax Notes	Note: Notes defined by X12 Standards
FTA Notes	Note: Notes defined by FTA Uniformity
SC Notes	Note: Notes defined by the South Carolina Department of Revenue to further clarify the Department's requirements
Struck-out Text	Text, elements or entire segments that are struck out (example), are part of the Uniform map, but are not used by South Carolina

Transaction Set Header Description

Beginning of Transaction Set Header Segment								(Required) Pos. No. 0100	
Element ID	Elem Ref #	Sub-Ele Ref #	Field Status	Field Name	Field Type	Length		Field Description	
						Min	Max		
ST01	143		M	Transaction Set Code	ID	3	3	Transaction Set Type "813"	
ST02	329		M	Transaction Set Control Number	AN	4	9	Filer defined unique control number (same value as SE02)	
ST03	1705		O/Z	Implementation Convention Reference	AN	1	5	Version of Taxing Authority's implementation Guide '2' = SC Version 2	
ST~813~1001~2\									
Syntax Notes: None									
FTA Note: It is recommended that the ST03 be used to help identify which implementation guide the trading partner is using. This element will help the receiver of the data determine if the sender is using an old guide or the most current guide for the data transmission.									

Identify Tax Agency Information Begin Tax Information Segment								(Required) Pos. No. 0200	
Element ID	Elem Ref #	Sub-Ele Ref #	Field Status	Field Name	Field Type	Length		Field Description	
						Min	Max		
BTI01	128		M	Reference Number Qualifier	ID	2	2	"T6" = Defines as Tax Filing	
BTI02	127		M	Reference Number	AN	3	3	Determined by FTA "050" = All Fuels Tax Filings	
BTI03	66		M	ID Code Qualifier	ID	2	2	"47" = Tax Authority	
BTI04	67		M	ID Code	AN	2	20	Determined by Tax Authority 'SCDOR'	
BTI05	373		O	Transaction Create Date	DT	8	8	"CCYYMMDD" = Transmission Date	
BTI06	818		O	Name Control ID	AN	4	4	First 4 positions of Taxpayer's Legal Business Name. If business name is less than 4 characters, left justify name control and pad with "*".	
BTI07	66		X	ID Code Qualifier	ID	2	2	"24" = FEIN Federal Employer Identification Number "34" = Social Security Number	
BTI08	67		X	ID Code	AN	9	15	Taxpayer's FEIN or SSN	
BTI09	66		X	ID Code Qualifier	ID	2	2	"49" = State (assigned) Identification Number	
BTI10	67		X	ID Code	AN	2	20	License or Permit Number	
BTI11	66		X	ID Code Qualifier	ID	2	2	"SV" = Electronic Filer ID Number	
BTI12	67		X	ID Code	AN	9	15	State assigned Software Identification	
BTI13	353		O	Transaction Set Purpose Code	ID	2	2	Original Filing Options: "00" = Original	
BTI14	640		O	Transaction Type Code	ID	2	2	Amended Filing Options: "6S" = Supplemental "CO" = Corrected	
BTI~T6~050~47~SCDOR~20010523~ABCD~24~516999988~49~371111118~SV~SCMFUEL0301~00\									
Syntax Notes: If either BTI07 or BTI08 is present, then the other is required. If either BTI09 or BTI10 is present, then the other is required.									

If either BTI11 or BTI12 is present, then the other is required.

FTA Notes:

BTI07 must be the FEIN if the taxpayer has one. Submit a SSN only for sole proprietorships that have not been issued a FEIN.

The application of BTI13 and BTI14 are as follows: BTI13 should be used when the taxpayer transmits their initial return (BTI13 should be used without BTI14); BTI14 should be used when the taxpayer transmits modifications (BTI14 should be used without BTI13). This is a recommendation of the Motor Fuel Uniformity Committee, not a requirement of X12. Further clarification of these elements is located below.

Element	Application
BTI13 [Initial Return]	
"00" = Original	Use "Original" when first attempting to transmit your return to the department whether the return is received or not. Always use "00" until the original return is received.
"05" = Replace	Use "Replace" when first attempt of transmitted return had corrupted data.
"15" = Resubmission	Use "Resubmission" when the Department did not receive first attempt of your transmitted return.
BTI14 [Amended Return]	
"CO" = Corrected	Use "Corrected" when adjusting or correcting original or amended return.
"6R" = Resubmission	Use "Resubmission" when first attempt to transmit amended return was not received by the Department.
"6S" = Supplemental	Use "Supplemental" when transmitting new or additional data not included in original or amended return.

Tax Filing Period							(Required)	
Date/Time Reference Segment							Pos. No. 0300	
Element ID	Elem Ref #	Sub-Ele Ref #	Field Status	Field Name	Field Type	Length		Field Description
						Min	Max	
DTM01	374		M	Date/Time Qualifier	ID	3	3	"194" = Tax Period End Date
DTM02	373		X	Date	DT	8	8	"CCYYMMDD" = Tax Filing Period End
DTM03 and DTM04 are not used.								
DTM05	1250		X	Date Time Period Format Qualifier	ID	3	3	"RD8" = Range of Dates
DTM06	1251		X	Date Time Period	AN	17	17	"CCYYMMDD CCYYMMDD" = Tax Filing Period Beginning and Ending Dates.
DTM~194~20030522\								
Syntax Notes: At least one of DTM02 or DTM05 is required. If either DTM05 or DTM06 is present, then the other is required.								
FTA Notes: If qualifier "194" is used in DTM01, then DTM05 and DTM06 are not used. If qualifier "683" is used in DTM01, then DTM02 is not used.								

Confidential Data								
Tax Information and Amount Segment							Pos. No. 0400	
Element ID	Elem Ref #	Sub-Ele Ref #	Field Status	Field Name	Field Type	Length		Field Description
						Min	Max	
TIA01	817		M	Tax Information Code	AN	4	4	"5010" = Confidential Information
TIA02 is not used.								
TIA03	449		X	Fixed Format Information	AN	4	5	User defined: Example: "6103" = IRS 6103B Tax data.
TIA~5010~~6103\								
Syntax Notes: TIA03 is required.								
FTA Notes: This segment is used only between the states and the IRS								

Total Net Reported Tax Information and Amount Segment									Pos. No. 0400
Element ID	Elem Ref #	Sub-Ele Ref #	Field Status	Field Name	Field Type	Length		Field Description	
						Min	Max		
TIA01	817		M	Tax Information Code	AN	4	4	"5001" = Total Net Reported	
TIA02 and TIA03 are not used.									
TIA04	380		X	Quantity	R	1	15	Total Number of Net Gallons/Liters in Tax Filing	
TIA05	355		M	Unit of Measurement Code	ID	2	2	"GA" = Gallons	
TIA~5001~~~100000~GA\									
Syntax Notes: TIA04 is required. If TIA05 is present, then TIA04 is required.									
FTA Notes: Even though this value can be calculated, it is included, as a control figure to verify that the amount calculated by the Tax Authority is the same as expected by the taxpayer.									
SC Notes: This is the sum of net gallons across all schedules in the tax filing									

Sequence ID Number Reference Number Segment									Pos. No. 0200
Element ID	Elem Ref #	Sub-Ele Ref #	Field Status	Field Name	Field Type	Length		Field Description	
						Min	Max		
REF01	128		M	Reference Identification Qualifier	ID	2	2	"FJ" = Sequence ID Number	
REF02	127		X	Reference Identification	AN	1	7	Sequence Number	
REF03	352		X	Description	AN	1	5	Error Response Code	
REF~55~01234\									
Syntax Notes: At least one of the REF02 or REF03 is required.									
FTA Notes: This segment is only used when resending to an error reported in the 151 transaction set. REF02 is always required. REF03 is used for resending to an error									

Payment Order Remittance Advice Beginning Segment									(Required) Pos. No. 0200
Element ID	Elem Ref #	Sub-Ele Ref #	Field Status	Field Name	Field Type	Length		Field Description	
						Min	Max		
BPR01	305		M	Transaction Handling Code	ID	1	2	"S" = Single Debit Authorization "P" = Pre notification	
BPR02	782		M	Monetary Amount	R	1	18	Amount of tax payment	
BPR03	478		M	Credit/Debit Flag Code	ID	1	1	"D" = Debit	
BPR04	591		M	Payment Method Code	ID	3	3	"ACH" = Automated Clearing House	
BPR05	812		M	Payment Format Code	ID	3	3	"CCD" = Cash Contraction/Disbursement "CCP" = Cash Concentration/Disbursement plus Addenda (CCD+)	
BPR06 through BPR11 are not inserted by the taxpayer. They are on file with the party that creates the ACH Debit transaction. The taxpayer transmits empty fields for these elements.									
BPR06	506		X/Z	(ODFI) ID Number Qualifier	ID	2	2	"01" = ABA Transit Routing Number and Check Digits.	
BPR07	507		X	(ODFI) Identification Number	AN	3	12	State's Bank Routing and Transit Number	
BPR08	569		O/Z	(ODFI) Account Number Qualifier	ID	1	3	"DA" = Demand Deposit "SG" = Savings	
BPR09	508		X/Z	(ODFI) Account Number	AN	1	35	State's Bank Account Number to be Credited	
BPR10	509		Ø	Originating Company Identifier	AN	10	10	State ID Example: Taxing Authority's DUNS Number	
BPR11	510		Ø	Originating Company Supplemental Code	Ø	9	9	Code Identifying Fiscal Agent	
BPR12	506		X/Z	(RDFI) ID Number Qualifier	ID	2	2	"01" = ABA Transit Routing Number and Check Digits	
BPR13	507		X	(RDFI) Identification Number	AN	3	12	Taxpayer's Bank Routing and Transit Number	
BPR14	569		O/Z	(RDFI) Account Number Qualifier	ID	1	3	"DA" = Demand Deposit "SG" = Savings	
BPR15	508		X/Z	(RDFI) Account Number	AN	1	35	Taxpayer's Bank Account to be Debited	
BPR16	373		O/Z	Date	DT	8	8	The intended payment effective date (CCYYMMDD)	
BPR17	1048		O/Z	Business Function Code	ID	1	3	"TAX" = Tax Payment	

BPR~S~500~D~ACH~CED~01~123456789~DA~987654321~20010325~TAX\							
Syntax Notes: If either BPR06 or BPR07 is present, then the other is required. If BPR08 is present, then BPR09 is required. If either BPR12 or BPR13 is present, then the other is required. If BPR14 is present, then BPR15 is required.							
FTA Notes: This segment should not be mandated by a taxing authority. ODFI (Originating Depository Financial Institution) is the bank that creates the ACH transaction. For debit transactions, this is the state's Bank. RDFI (Receiving Depository Financial Institution) is the bank that accepts the ACH transaction. For debit transactions, this is the Taxpayer's Bank.							

Name Detail							Pos. No. 0500	
Name Segment								
Element ID	Elem Ref #	Sub-Ele Ref #	Field Status	Field Name	Field Type	Length Min Max		Field Description
N101	98		M	Entity Identification Code	ID	2	2	"TP" = Primary Taxpayer
N102	93		X	Name	AN	1	35	Taxpayer Name
N1~TP~ABC Distributing\								
Syntax Notes: N102 is required.								
FTA Note: N101: Use "TP" for tax reporting. or "L9" for information reporting.								

Additional Taxpayer Name Detail							Pos. No. 0600	
Additional Name Segment								
Element ID	Elem Ref #	Sub-Ele Ref #	Field Status	Field Name	Field Type	Length Min Max		Field Description
N201	93		M	Name	AN	1	35	Taxpayer Name
N202	93		O	Name	AN	1	35	Taxpayer Name
N2~ABC Trucking~ABC Station\								
Syntax Notes: None								
FTA Note: None								

Address Detail							Pos. No. 0800	
Address Information Segment								
Element ID	Elem Ref #	Sub-Ele Ref #	Field Status	Field Name	Field Type	Length Min Max		Field Description
N301	166		M	Address Information	AN	1	35	First Line Street Address
N302	166		O	Address Information	AN	1	35	Second Line Street Address
N3~123 C Street~PO Box 222\								
Syntax Notes: None								
FTA Note: None								

City, State, Zip Code Detail							Pos. No. 0900	
Location Geographic Segment								
Element ID	Elem Ref #	Sub-Ele Ref #	Field Status	Field Name	Field Type	Length Min Max		Field Description
N401	19		O	City Name	AN	2	30	Name of City
N402	156		O	State code or Province	ID	2	2	State or Province Abbreviation
N403	116		O	Postal (Zip) Code	ID	3	11	ZIP Code, ZIP Plus 4 Code or Foreign Postal code
N404	26		O	Country	ID	2	2	Country Abbreviation (United States = US)
N4~Summerville~SC~12345~2222~US\								
Syntax Notes: None								
FTA Note: None								

General Contact Person								Pos. No. 1000
Administrative Communications Contact Segment								
Element ID	Elem Ref #	Sub-Ele Ref #	Field Status	Field Name	Field Type	Length		Field Description
						Min	Max	
PER01	366		M	Contact Function Code	ID	2	2	Contact Type Code: "CN" = General Contact
PER02	93		O	Name	AN	1	35	Contact Name
PER03	365		X	Communications Number Qualifier	ID	2	2	"TE" = Telephone Number
PER04	364		X	Communications Number	AN	10	14	Voice Telephone Number
PER05	365		X	Communications Number Qualifier	ID	2	2	"FX" = FAX Number
PER06	364		X	Communications Number	AN	10	10	FAX Telephone Number
PER07	365		X	Communications Number Qualifier	ID	2	2	"EM" = Electronic Mail
PER08	364		X	Communications Number	AN	1	80	E-mail Address
PER~CN~Allen Smith~TE~4069959988~FX~4069950329~EM~asmith@abc.com\								
Syntax Notes: If either PER03 or PER04 is present, then the other is required. If either PER05 or PER06 is present, then the other is required. If either PER07 or PER08 is present, then the other is required.								
FTA Note: None								
SC Note: This segment is required. PER07 and PER08 (e-mail address) are required								

EDI Contact Person								
Administrative Communications Contact Segment								Pos. No. 1000
Element ID	Elem Ref #	Sub-Ele Ref #	Field Status	Field Name	Field Type	Length		Field Description
						Min	Max	
PER01	366		M	Contact Function Code	ID	2	2	Contact Type Code: "EA" = EDI Coordinator
PER02	93		O	Name	AN	1	35	Contact Name
PER03	365		X	Communications Number Qualifier	ID	2	2	"TE" = Telephone Number
PER04	364		X	Communications Number	AN	10	14	Voice Telephone Number
PER05	365		X	Communications Number Qualifier	ID	2	2	"FX" = FAX Number
PER06	364		X	Communications Number	AN	10	10	FAX Telephone Number
PER07	365		X	Communications Number Qualifier	ID	2	2	"EM" = Electronic Mail
PER08	364		X	Communications Number	AN	1	80	E-mail Address
PER~EA~Bob Smith~TE~4069958877~FX4069950329~EM~bsmith@abc.com\								
Syntax Notes: If either PER03 or PER04 is present, then the other is required. If either PER05 or PER06 is present, then the other is required. If either PER07 or PER08 is present, then the other is required.								
FTA Note: None								
SC Note: This segment is required. PER07 and PER08 (e-mail address) are required								

The following segments are required if the mailing address is different than the physical address.

Mailing Name Detail								
Name Segment								Pos. No. 0500
Element ID	Elem Ref #	Sub-Ele Ref #	Field Status	Field Name	Field Type	Length		Field Description
						Min	Max	
N101	98		M	Entity Identification Code	ID	2	2	"31" = Postal Mailing
N102	93		X	Name	AN	1	35	Mailing Name
N1~31~ABC Company\								
Syntax Notes: N102 is required.								
FTA Note: None								

Mailing Additional Name Detail								
Additional Name Segment								Pos. No. 0600
Element ID	Elem Ref #	Sub-Ele Ref #	Field Status	Field Name	Field Type	Length		Field Description
						Min	Max	
N201	93		M	Name	AN	1	35	Mailing Name
N202	93		O	Name	AN	1	35	Mailing Name
N2~ABC Distributing~ABC Trucking\								
Syntax Notes: None								
FTA Note: None								

Mailing Address Detail								
Address Information Segment								Pos. No. 0800
Element ID	Elem Ref #	Sub-Ele Ref #	Field Status	Field Name	Field Type	Length		Field Description
						Min	Max	
N301	166		M	Address Information	AN	1	35	First Line Street Address
N302	166		O	Address Information	AN	1	35	Second Line Street Address
N3~123 C Street~PO Box 222\								
Syntax Notes: None								
FTA Note: None								

Mailing City, State, Zip Code Detail							Pos. No. 0900		
Location Geographic Segment									
Element ID	Elem Ref #	Sub-Ele Ref #	Field Status	Field Name	Field Type	Length		Field Description	
						Min	Max		
N401	19		O	City Name	AN	2	30	Name of City	
N402	156		O	State code or Province	ID	2	2	State or Province Abbreviation	
N403	116		O	Postal (Zip) Code	ID	3	11	ZIP Code, ZIP Plus 4 Code or Foreign Postal code	
N404	26		O	Country	ID	2	2	Country Abbreviation (United States = US)	
N4~Columbia~SC~12345-2222~US\									
Syntax Notes: None									
FTA Note: None									

End of Transaction Set Header

Transaction Set - Terminal Operator Report (TOR)

This TFS loop reports information on the TOR. Transaction detail is reported using the Schedule section of this map.

The TFS loop is repeated when reporting information for each terminal reported. Repeat the FGS loop within the TFS loop for each product reported.

Beginning of Terminal Operator Report								
Tax Form Segment								Pos. No. 0100
Element ID	Elem Ref. #	Sub-Ele Ref. #	Field Status	Field Name	Field Type	Length		Field Description
						Min	Max	
TFS01	128		M	Reference Identification Qualifier	ID	2	2	"T2" = Tax Form Code
TFS02	127		M	Reference Identification	AN	1	6	"TOR" = Terminal Operator Report
TFS03 and TFS04 are not used								
TFS05	66		X	ID Code Qualifier	ID	2	2	"TC" = IRS Terminal Code
TFS06	67		X	ID Code	AN	9	9	IRS Terminal Control Number (TCN)
TFS~T2~TOR~~~TC~T99SC0000\								
Syntax Notes: If either TFS05 or TFS06 is present, then the other is required.								
FTA Note: None								

Relationship to the Transaction Information								
Reference Segment								Pos. No. 0200
Element ID	Elem Ref. #	Sub-Ele Ref. #	Field Status	Field Name	Field Type	Length		Field Description
						Min	Max	
REF01	128		M	Reference Identification Qualifier	ID	2	2	"SU" = Special Processing
REF02	127		X	Reference Identification	AN	3	3	IRS = IRS Data N/A = If not applicable to the IRS
REF03 Not used								
REF04	C040	128	M	Reference Identification Qualifier	ID	2	2	"S0" = Special Approval (S Zero)
REF05	C040	127	M	Reference Identification	AN	2	2	State Abbreviation for state which data belongs to.
REF06	C040	128	X	Reference Identification Qualifier	ID	2	2	"S0" = Special Approval (S Zero)
REF07	C040	127	X	Reference Identification	AN	2	2	State abbreviation for state which data belongs to.
REF~SU~N/A~~S0^SC\								
Syntax Notes: REF02 is required.								
FTA Note: REF02, REF05 and REF07 represent the taxing authorities and their relationship to the information in this TFS loop. REF05 - REF07 use the sub-element separator.								

Sequence ID Number Usage

Sequence ID number is a counter used as a reference point when the SCDOR contacts a filer with a question about the filer EDI file. The first Sequence ID Number within an envelope (ISA/IEA loop) will start at 1. Every subsequent REF within the ISA/IEA loop will be incremented by 1.

Sequence ID Number								
Reference Number Segment								Pos. No. 0200
Element ID	Elem Ref #	Sub-Ele Ref #	Field Status	Field Name	Field Type	Length		Field Description
						Min	Max	
REF01	128		M	Reference Identification Qualifier	ID	2	2	"55" = Sequence ID Number
REF02	127		X	Reference Identification	AN	1	7	Sequence Number
REF03	352		X	Description	AN	4	5	Error Response Code
REF~55~01234\								
Syntax Notes: REF02 is required.								
FTA Notes: REF02 is always required; REF03 is used when responding to an error								
SC Notes: REF03 is not used. See notes on sequence number on page 5-33								

Condition 1 - If an account has no activity, the following REF segment is required. The following Condition 2 DTM and FGS are not used.

No Activity Reference Number Segment								(Conditional) Pos. No. 0200	
Element ID	Elem Ref #	Sub-Ele Ref #	Field Status	Field Name	Field Type	Length		Field Description	
						Min	Max		
REF01	128		M	Entity Identification Code	ID	2	2	"BE" = Business Activity	
REF02	127		X	Name	AN	1	1	"1" = No Activity	
REF~BE~1\									
Syntax Notes: REF02 is required.									
FTA Note: None									

Condition 2 - If an account has activity, the following DTM and FGS segments are required. The preceding REF is not used. This FGS loop contains inventory information. The FGS loop repeated when the product code value changes.

Ending Inventory Date Date/Time Reference Segment								(Conditional) Pos. No. 0300	
Element ID	Elem Ref #	Sub-Ele Ref #	Field Status	Field Name	Field Type	Length		Field Description	
						Min	Max		
DTM01	374		M	Date/Time Qualifier	ID	3	3	"184" = Inventory Date	
DTM02	373		X	Date	DT	8	8	"CCYYMMDD"	
DTM~184~20010520\									
Syntax Notes: DTM02 is required.									
FTA Note: None									

Physical Inventory by Product Form Group Segment								(Conditional) Pos. No. 1000	
Element ID	Elem Ref #	Sub-Ele Ref #	Field Status	Field Name	Field Type	Length		Field Description	
						Min	Max		
FGS01	350		M	Assigned Identification	AN	2	2	"EI" = Ending Inventory	
FGS02	128		X	Reference Identification Qualifier	ID	2	2	"PG" = Product Group	
FGS03	127		X	Reference Identification	AN	3	3	Product Code See Appendix on page D-61	
FGS~EI~PG~065\									
Syntax Notes: If either FGS02 or FGS03 is present, then the other is required.									
FTA Note: None									
SC Notes: Terminals that are not located in South Carolina but have product that is distributed into South Carolina are not required to report ending inventory to the Department. For non-South Carolina terminals, reporting of inventory is encouraged, however it is not required									

Sequence ID Number Reference Number Segment								Pos. No. 0200	
Element ID	Elem Ref #	Sub-Ele Ref #	Field Status	Field Name	Field Type	Length		Field Description	
						Min	Max		
REF01	128		M	Reference Identification Qualifier	ID	2	2	"55" = Sequence ID Number	
REF02	127		X	Reference Identification	AN	1	7	Sequence Number	
REF03	352		X	Description	AN	1	5	Error Response Code	
REF~55~01234\									
Syntax Notes: REF02 is required.									
FTA Notes: REF02 is always required; REF03 is used when responding to an error									
SC Notes: REF03 is not used. See notes on sequence number on page 5-33									

Inventory								(Required if FGS is Used)	
Tax Information and Amount Segment								Pos. No. 1800	
Element ID	Elem Ref. #	Sub-Ele Ref. #	Field Status	Field Name	Field Type	Length		Field Description	
						Min	Max		
TIA01	817		M	Tax Information ID Number	AN	4	4	“5002” = Net Physical Inventory	
TIA02 and TIA03 are not used.									
TIA04	380		X	Quantity	R	1	15	Quantity	
TIA05	355		M	Unit of Measurement Code	ID	2	2	“GA” = Gallons	
TIA~5002~~~10000~GA\									
Syntax Notes: At least one of TIA02, TIA03, TIA04,TIA06 or TIA07 is required. If TIA05 is present, then TIA04 is required.									
FTA Note: Physical Inventory is the only value passed. All other information is derivable from schedules.									

End of FGS loop (Line item detail)

End of TFS loop (TOR detail)

Transaction Set - Supplier/Distributor Report (SDR)

This TFS loop reports information on the SDR. Transaction detail is reported using the Summary Information and Schedule sections of this map.

Beginning of Supplier/Distributor Report Detail								Pos. No. 0100	
Tax Form Segment									
Element ID	Elem Ref. #	Sub-Ele Ref. #	Field Status	Field Name	Field Type	Length		Field Description	
						Min	Max		
TFS01	128		M	Reference Identification Qualifier	ID	2	2	"T2" = Tax Form Code	
TFS02	127		M	Reference Identification	AN	1	6	"SDR" = Supplier/Distributor Report	
TFS~T2~SDR\									
Syntax Notes: None									
FTA Note: The TFS loop is used once when reporting information for the SDR. Repeat the FGS loop within the TFS loop for each product reported.									

Relationship to the Transaction Information								Pos. No. 0200	
Reference Segment									
Element ID	Elem Ref. #	Sub-Ele Ref. #	Field Status	Field Name	Field Type	Length		Field Description	
						Min	Max		
REF01	128		M	Reference Identification Qualifier	ID	2	2	"SU" = Special Processing	
REF02	127		X	Reference Identification	AN	3	3	IRS = IRS Data N/A = If not applicable to the IRS	
REF03 Not used									
REF04	C040	128	M	Reference Identification Qualifier	ID	2	2	"S0" = Special Approval (S Zero)	
REF05	C040	127	M	Reference Identification	AN	2	2	State Abbreviation for state which data belongs to.	
REF06	C040	128	X	Reference Identification Qualifier	ID	2	2	"S0" = Special Approval (S Zero)	
REF07	C040	127	X	Reference Identification	AN	2	2	State abbreviation for state which data belongs to.	
REF~SU~N/A~S0^SC\									
Syntax Notes: At least one of REF02 or REF03 is required.									
FTA Note: REF02, REF05 and REF07 represent the taxing authorities and their relationship to the information in this TFS loop. REF05 - REF07 use the sub-element separator.									

Sequence ID Number								Pos. No. 0200	
Reference Number Segment									
Element ID	Elem Ref #	Sub-Ele Ref #	Field Status	Field Name	Field Type	Length		Field Description	
						Min	Max		
REF01	128		M	Reference Identification Qualifier	ID	2	2	"55" = Sequence ID Number	
REF02	127		X	Reference Identification	AN	1	7	Sequence Number	
REF03	352		X	Description	AN	4	5	Error Response Code	
REF~55~01234\									
Syntax Notes: REF02 is required.									
FTA Notes: REF02 is always required; REF03 is used when responding to an error									
SC Notes: REF03 is not used. See notes on sequence number on 5-33									

Condition 1 - If an account has no activity, this segment is required. The Condition 2 DTM, TIA and FGS Loop are not used.

No Activity								(Conditional)	
Reference Number Segment								Pos. No. 0200	
Element ID	Elem Ref #	Sub-Ele Ref #	Field Status	Field Name	Field Type	Length		Field Description	
						Min	Max		
REF01	128		M	Entity Identification Code	ID	2	2	"BE" = Business Activity	
REF02	127		X	Name	AN	1	1	"1" = No Activity	
REF~BE~1\									
Syntax Notes: REF02 is required.									
FTA Notes: None									

Condition 2 – If an account has activity, at least theTIA (Total Due) segment is required. The Condition 1 REF is not used. The FGS loop contains inventory information by product. The FGS loop repeats when the product code value changes.

Ending Inventory Date Date/Time Reference Segment								(Conditional) Pos. No. 0300
Element ID	Elem Ref #	Sub-Ele Ref #	Field Status	Field Name	Field Type	Length		Field Description
						Min	Max	
DTM01	374		M	Date/Time Qualifier	ID	3	3	"184" – Inventory Date
DTM02	373		X	Date	DT	8	8	"CCYYMMDD"
DTM~184~20010525\								
Syntax Notes: DTM02 is required.								
FTA Notes: Use this segment when reporting ending inventory in the FGS Loop for the supplier/distributor.								

Total Due Tax Information and amount Segment								(Conditional) Pos. No. 0920
Element ID	Elem Ref #	Sub-Ele Ref #	Field Status	Field Name	Field Type	Length		Field Description
						Min	Max	
TIA01	817		M	Tax Information ID Number	AN	4	4	"5003" = Total Due
TIA02	782		X	Monetary Amount	R	1	15	Dollar Amount
TIA03 is not used.								
TIA04	380		X	Quantity	R	1	15	Quantity
TIA05	355		M	Unit of Measurement Code	ID	2	2	"GA" = Gallons "LT" – Liters
TIA~5003~148.75~~25000~GA\								
Syntax Notes: At least one of TIA02 or TIA04 is required. If TIA05 is present, then TIA04 is required.								
FTA Notes: Total Due is passed as a check value and represents dollars and/or quantity.								
SC Notes: TIA02 is the total amount due from Line 27 of the Supplier Return TIA05 is the sum of net gallons on all Supplier Schedules								

Physical Inventory by Product Form Group Segment								(Conditional) Pos. No. 1000
Element ID	Elem Ref #	Sub-Ele Ref #	Field Status	Field Name	Field Type	Length		Field Description
						Min	Max	
FGS01	350		M	Assigned Identification	AN	2	2	"BI" – Beginning Inventory "EI" – Ending Inventory
FGS02	428		X	Reference Identification Qualifier	ID	2	2	"PG" = Product Group
FGS03	427		X	Reference Identification	AN	3	3	Product Code
FGS~EI~PG~065\								
Syntax Notes: If either FGS02 or FGS03 is present, then the other is required.								
FTA Notes: This FGS allows looping to report inventory by product. Repeat this loop (a single TIA per FGS) as many times as needed to complete reporting requirements.								
SC Notes: SC does not require Supplier inventory to be reported								

Sequence ID Number Reference Number Segment								Pos. No. 0200
Element ID	Elem Ref #	Sub-Ele Ref #	Field Status	Field Name	Field Type	Length		Field Description
						Min	Max	
REF01	428		M	Reference Identification Qualifier	ID	2	2	"55" = Sequence ID Number
REF02	427		X	Reference Identification	AN	4	7	Sequence Number
REF03	352		X	Description	AN	4	5	Error Response Code
REF~55~01234\								
Syntax Notes: REF02 is required.								
FTA Notes: REF02 is always required; REF03 is used when responding to an error								
SC Notes: REF03 is not used. See notes on sequence number on page 5-33								

Inventory								(Required if FGS is Used)	
Tax Information and Amount Segment								Pos. No. 1800	
Element ID	Elem Ref. #	Sub-Element Ref. #	Field Status	Field Name	Field Type	Length		Field Description	
						Min	Max		
TIA01	817		M	Tax Information ID Number	AN	4	4	"5002" = Net Physical Inventory	
TIA02 - TIA03 are not used.									
TIA04	380		X	Quantity	R	1	15	Quantity	
TIA05	355		M	Unit of Measurement Code	ID	2	2	"GA" = Gallons "LT" = Liter	
TIA-5002-25000-GA\									
Syntax Notes: TIA04 is required.									
IF TIA05 is present, then TIA04 is required.									
FTA Notes: Physical Inventory is the only value passed in this loop. All other information is derivable from schedules.									

End of FGS loop (Line item detail)

End of TFS loop (SDR detail)

Transaction Set – Common Carrier Report(CCR)

This TFS loop reports information on the CCR. Transaction detail is reported using the Schedule sections of this map.

Beginning of Common Carrier Report								Pos. No. 0100	
Tax Form Segment									
Element ID	Elem Ref. #	Sub-Ele Ref. #	Field Status	Field Name	Field Type	Length		Field Description	
						Min	Max		
TFS01	128		M	Reference Identification Qualifier	ID	2	2	"T2" = Tax Form Code	
TFS02	127		M	Reference Identification	AN	1	6	"CCR" = Common Carrier Return	
TFS~T2~CCR\									
Syntax Notes: None									
FTA Notes: The TFS loop is used once when reporting information for the CCR. Repeat the FGS loop within the TFS loop for each product reported.									

Relationship to the Transaction Information								Pos. No. 0200	
Reference Segment									
Element ID	Elem Ref. #	Sub-Ele Ref. #	Field Status	Field Name	Field Type	Length		Field Description	
						Min	Max		
REF01	128		M	Reference Identification Qualifier	ID	2	2	"SU" = Special Processing	
REF02	127		X	Reference Identification	AN	3	3	IRS = IRS Data N/A = If not applicable to the IRS	
REF03 Not used									
REF04	C040	128	M	Reference Identification Qualifier	ID	2	2	"S0" = Special Approval (S Zero)	
REF05	C040	127	M	Reference Identification	AN	2	2	State Abbreviation for state which data belongs to.	
REF06	C040	128	X	Reference Identification Qualifier	ID	2	2	"S0" = Special Approval (S Zero)	
REF07	C040	127	X	Reference Identification	AN	2	2	State abbreviation for state which data belongs to.	
REF~SU~IRS~S0^SC\									
Syntax Notes: REF02 is required.									
FTA Notes: REF02, REF05 and REF07 represent the taxing authorities and their relationship to the information in this TFS loop. REF05 – REF07 use the sub-element separator.									

Sequence ID Number								Pos. No. 0200	
Reference Number Segment									
Element ID	Elem Ref #	Sub-Ele Ref #	Field Status	Field Name	Field Type	Length		Field Description	
						Min	Max		
REF01	128		M	Reference Identification Qualifier	ID	2	2	"55" = Sequence ID Number	
REF02	127		X	Reference Identification	AN	1	7	Sequence Number	
REF03	352		X	Description	AN	4	5	Error Response Code	
REF~55~0001234\									
Syntax Notes: REF02 is required.									
FTA Notes: REF02 is always required; REF03 is used from responding to an error									
SC Notes: REF03 is not used									

Condition 1 - If an account has no activity, this segment is required. The Condition 2 TIA is not used.

No Activity								(Conditional)	
Reference Number Segment								Pos. No. 0200	
Element ID	Elem Ref #	Sub-Ele Ref #	Field Status	Field Name	Field Type	Length		Field Description	
						Min	Max		
REF01	128		M	Entity Identification Code	ID	2	2	"BE" = Business Activity	
REF02	127		X	Name	AN	1	1	"1" = No Activity	
REF~BE~1\									
Syntax Notes: REF02 is required.									
FTA Notes: None									

Condition 2 – If an account has activity, this segment is required. The Condition 1 REF is not used.

Total Delivered Tax Information and Amount Segment								(Conditional) Pos. No. 0920
Element ID	Elem Ref. #	Sub-Ele Ref. #	Field Status	Field Name	Field Type	Length		Field Description
						Min	Max	
TIA01	817		M	Tax Information ID Number	AN	4	4	TIA Code "5004" = Total Net Transported
TIA02 and TIA03 are not used.								
TIA04	380		X	Quantity	R	1	15	Quantity
TIA05	355		M	Unit of Measurement Code	ID	2	2	"GA" = Gallons "LT" = Liters
TIA~5004~~~1000000~GA\								
Syntax Notes: TIA04 is required. If TIA05 is present, then TIA04 is required.								
FTA Notes: None								

End of TFS loop (CCR detail)

Summary Information

This TFS loop reports summary information. This TFS loop is used in combination with the SDR report.

Summary information is used when the information cannot be derived from the schedule details. This TFS loop repeats when one of the following values changes: TFS02 Summary Code, TFS04 Product Code.

If there are no transactions to report in this filing, it is not necessary to transmit a Summary Information TFS loop.

Beginning of Summary Information									Pos. No. 0100
Tax Form Segment									
Element ID	Elem Ref. #	Sub-Ele Ref. #	Field Status	Field Name	Field Type	Length		Field Description	
						Min	Max		
TFS01	128		M	Reference Identification Qualifier	ID	2	2	"T3" = Tax Schedule Code	
TFS02	127		M	Reference Identification	AN	1	6	TFS02 Summary Code "S02A" Tax "S03A" Tax Credit "S03A01" Collection (Administration) Allowance "S03C" Allowance (Tare) "S02C" Inspection Fee "S03B02" Inspection Fee Credit "S02D" Other Environmental Fees "S03B" Fee Credit	
TFS03	128		X	Reference Identification Qualifier	ID	2	2	"PG" = Product Group	
TFS04	127		X	Reference Identification	AN	3	3	Product Code "065" for reporting Gasoline products "167" for reporting Special Fuel products	
TFS05	66		X	Identification Code Qualifier	ID	2	2	"94" = Mode	
TFS06	67		X	Identification Code	AN	2	2	"CE" = Transaction Type Mode Code	
TFS~T3~S02C~PG~065~94~CE\									
Syntax Notes: If either TFS03 or TFS04 is present, then the other is required. If either TFS05 or TFS06 is present, then the other is required.									
FTA Notes: None									
SC Notes:									

Relationship to the Transaction Information									Pos. No. 0200
Reference Segment									
Element ID	Elem Ref. #	Sub-Ele Ref. #	Field Status	Field Name	Field Type	Length		Field Description	
						Min	Max		
REF01	128		M	Reference Identification Qualifier	ID	2	2	"SU" = Special Processing	
REF02	127		X	Reference Identification	AN	3	3	IRS = IRS Data N/A = If not applicable to the IRS	
REF03-Not used									
REF04	C040	128	M	Reference Identification Qualifier	ID	2	2	"S0" = Special Approval (S Zero)	
REF05	C040	127	M	Reference Identification	AN	2	2	State Abbreviation for state which data belongs to.	
REF06	C040	128	X	Reference Identification Qualifier	ID	2	2	"S0" = Special Approval (S Zero)	
REF07	C040	127	X	Reference Identification	AN	2	2	State abbreviation for state which data belongs to.	
REF~SU~N/A~S0^SC\									
Syntax Notes: At least one of REF02 or REF03 is required.									
FTA Notes: REF02, REF05 and REF07 represent the taxing authorities and their relationship to the information in this TFS loop. REF05 - REF07 use the sub-element separator.									

Sequence ID Number Reference Number Segment									Pos. No. 0200
Element ID	Elem Ref #	Sub-Ele Ref #	Field Status	Field Name	Field Type	Length		Field Description	
						Min	Max		
REF01	128		M	Reference Identification Qualifier	ID	2	2	"55" = Sequence ID Number	
REF02	127		X	Reference Identification	AN	1	7	Sequence Number	
REF03	352		X	Description	AN	4	5	Error Response Code	
REF~55~01234\									
Syntax Notes: REF02 is required.									
FTA Notes: REF02 is always required; REF03 is used when responding to an error									
SC Notes: REF03 is not used. See notes on sequence number on page 5-33									

Summary Data Forms Group Segment									Pos. No. 1000
Element ID	Elem Ref. #	Sub-Ele Ref. #	Field Status	Field Name	Field Type	Length		Field Description	
						Min	Max		
FGS01	350		M	Assigned Identification	AN	1	1	"S" = Schedule Summary	
FGS~S\									
Syntax Notes: None									
FTA Notes: None									

Sequence ID Number Reference Number Segment									Pos. No. 0200
Element ID	Elem Ref #	Sub-Ele Ref #	Field Status	Field Name	Field Type	Length		Field Description	
						Min	Max		
REF01	128		M	Reference Identification Qualifier	ID	2	2	"55" = Sequence ID Number	
REF02	127		X	Reference Identification	AN	1	7	Sequence Number	
REF03	352		X	Description	AN	4	5	Error Response Code	
REF~55~01234\									
Syntax Notes: REF02 is required.									
FTA Notes: REF02 is always required; REF03 is used when responding to an error									
SC Notes: REF03 is not used. See notes on sequence number on page 5-33									

Information Tax Information and Amount Segment									Pos. No. 1800
Element ID	Elem Ref. #	Sub-Ele Ref. #	Field Status	Field Name	Field Type	Length		Field Description	
						Min	Max		
TIA01	817		M	Tax Information ID Number	AN	4	4	TIA Code "5005" Net	
TIA02	782		X	Monetary Amount	R	1	15	Dollar Amount	
TIA03 are not used.									
TIA04	380		X	Quantity	R	4	45	Quantity	
TIA05	355		M	Unit of Measurement Code	ID	2	2	"GA" = Gallons "LT" = Liters	
TIA~5005~25000\									
Syntax Notes: At least one of TIA02 or TIA04 is required. If TIA05 is present, then TIA04 is required.									
FTA Notes: None									

Interest Tax Information and Amount Segment									Pos. No. 1800
Element ID	Elem Ref. #	Sub-Ele Ref. #	Field Status	Field Name	Field Type	Length		Field Description	
						Min	Max		
TIA01	817		M	Tax Information ID Number	AN	4	4	"5008" = Interest	
TIA02	782		X	Monetary Amount	R	1	15	Dollar Amount	
TIA~5008~500\									
Syntax Notes: TIA02 is required.									
FTA Notes: None									

Penalty								Pos. No. 1800	
Tax Information and Amount Segment									
Element ID	Elem Ref. #	Sub-Ele Ref. #	Field Status	Field Name	Field Type	Length		Field Description	
						Min	Max		
TIA01	817		M	Tax Information ID Number	AN	4	4	“5009” = Penalty	
TIA02	782		X	Monetary Amount	R	1	15	Dollar Amount	
TIA~5009~200\									
Syntax Notes: TIA02 is required.									
FTA Notes: None									

End of FGS loop (Line item detail)

End of TFS loop (SDR detail)

South Carolina Required Summary

Supplier Return Summary Codes to be included:

S02A Tax
 S03A Tax Credit
 S03A01 Collection Allowance (Administration allowance)
 S03C Allowance (Tare allowance)
 S02C Inspection Fee
 S03B02 Inspection Fee Credit
 S02D Other Environmental Fees
 S03B Fee Credit

All fields listed are from page 1 of the Supplier Return.

Gasoline

TFS02 Summary Code: S02A		
Gasoline Tax	(Line 1 of Supplier return)	TIA Code: 5005
Gasoline Tax Interest	(Line 7 of Supplier return)	TIA Code: 5008
Gasoline Tax Penalty 5009	(Line 6 of Supplier return)	TIA Code:

TFS02 Summary Code: S03A		
Gasoline Tax Credit	(Line 4 of Supplier return)	TIA Code: 5005

TFS02 Summary Code: S03A01		
Gasoline Administrative Allowance	(Line 3 of Supplier return)	TIA Code: 5005

TFS02 Summary Code: S03C		
Gasoline Tare Allowance	(Line 2 of Supplier return)	TIA Code: 5005

Special Fuel

TFS02 Summary Code: S02A		
Special Fuel Tax	(Line 9 of Supplier return)	TIA Code: 5005
Special Fuel Tax Interest	(Line 15 of Supplier return)	TIA Code: 5008
Special Fuel Tax Penalty	(Line 14 of Supplier return)	TIA Code: 5009

TFS02 Summary Code: S03A		
Special Fuel Tax Credit	(Line 12 of Supplier return)	TIA Code: 5005

TFS02 Summary Code: S03A01		
Special Fuel Administrative Allowance	(Line 11 of Supplier return)	TIA Code: 5005

TFS02 Summary Code: S03C		
Special Fuel Tare Allowance	(Line 10 of Supplier return)	TIA Code: 5005

Inspection Fees

TFS02 Summary Code: S02C		
Inspection Fee	(Line 17 of Supplier return)	TIA Code: 5005
Inspection Fee Interest	(Line 20 of Supplier return)	TIA Code: 5008
Inspection Fee Penalty	(Line 19 of Supplier return)	TIA Code: 5009
TFS02 Summary Code: S03B02		
Inspection Fee Credit	(Line 18 of Supplier return)	TIA Code: 5005

Environmental Impact Fees

TFS02 Summary Code: S02D		
Environmental Fee	(Line 22 of Supplier return)	TIA Code: 5005
Environmental Fee Interest	(Line 25 of Supplier return)	TIA Code: 5008
Environmental Fee Penalty	(Line 24 of Supplier return)	TIA Code: 5009
TFS02 Summary Code: S03B		
Environmental Fee Credit	(Line 23 of Supplier return)	TIA Code: 5005

See sample mapping of Supplier return on page L-74.

Schedules

This TFS loop begins the schedule detail. It repeats when one of the following values change:

Tax Form Code, Schedule Code, Mode Code, Product Code, Origin, Position Holder, Seller, Consignor, Carrier, Buyer, Consignee or Destination.

If there are no transactions to report in this filing, it is not necessary to transmit a Schedules TFS loop. You must indicate no activity in the TOR, SDR and/or CCR sections of this map.

Note: Terminal Operators for out-of-state terminals that disburse product into South Carolina are required to report terminal disbursements; they are not required to report terminal receipts.

Beginning of Schedules								Pos. No. 0100
Tax Form Segment								
Element ID	Elem Ref. #	Sub-Ele Ref. #	Field Status	Field Name	Field Type	Length		Field Description
						Min	Max	
TFS01	128		M	Reference Identification Qualifier	ID	2	2	"T3" = Tax Schedule Code
TFS02	127		M	Reference Identification	AN	1	6	Schedule Type Code See schedule code list in Appendix on page C-60
TFS03	128		X	Reference Identification Qualifier	ID	2	2	"PG" = Product Group
TFS04	127		X	Reference Identification	AN	3	3	Product Code See Product Codes in Appendix on page D-61
TFS05	66		X	Identification Code Qualifier	ID	2	2	"94" = Mode
TFS06	67		X	Identification Code	AN	2	2	Transaction Type Mode Code See Code List in Appendix on page F-64
TFS~T3~2~PG~065~94~J \								
Syntax Notes: If either TFS03 or TFS04 is present, then the other is required. If either TFS05 or TFS06 is present, then the other is required.								
FTA Notes: TFS02 - Terminal schedule of receipts do not have schedule type codes. It is recommended you use "TR" for receipts.								

Relationship to the Transaction Information								Pos. No. 0200
Reference Segment								
Element ID	Elem Ref. #	Sub-Ele Ref. #	Field Status	Field Name	Field Type	Length		Field Description
						Min	Max	
REF01	128		M	Reference Identification Qualifier	ID	2	2	"SU" = Special Processing
REF02	127		X	Reference Identification	AN	3	3	IRS = IRS Data N/A = If not applicable to the IRS
REF03 - Not used								
REF04	C040	128	M	Reference Identification Qualifier	ID	2	2	"S0" = Special Approval (S Zero)
REF05	C040	127	M	Reference Identification	AN	2	2	State Abbreviation for state which data belongs to.
REF06	C040	128	X	Reference Identification Qualifier	ID	2	2	"S0" = Special Approval (S Zero)
REF07	C040	127	X	Reference Identification	AN	2	2	State abbreviation for state which data belongs to.
REF~SU~N/A~S0^SC\								
Syntax Notes: REF02 is required.								
FTA Notes: REF02, REF05 and REF07 represent the taxing authorities and their relationship to the information in this TFS loop. REF05 - REF07 use the sub-element separator.								

Sequence ID Number								Pos. No. 0200
Reference Number Segment								
Element ID	Elem Ref #	Sub-Ele Ref #	Field Status	Field Name	Field Type	Length		Field Description
						Min	Max	
REF01	128		M	Reference Identification Qualifier	ID	2	2	"55" = Sequence ID Number
REF02	127		X	Reference Identification	AN	1	7	Sequence Number
REF03	352		X	Description	AN	4	5	Error Response Code
REF~55~01234\								
Syntax Notes: REF02 is required.								
FTA Notes: REF02 is always required; REF03 is used when responding to an error								
SC Notes: REF03 is not used. See notes on sequence number on page 5-33								

For Point of Origin/Terminal: (One of the following Options is Required)

Use Option 1 when the origin has an IRS TCN.

Use Option 2 when the origin does not have an IRS TCN.

Use Option 3 when the state requires an origin facility ID (currently used by the state of Florida).

Option 1

Point of Origin Name Segment 1										(One of the two options is used) Pos. No. 0500	
Element ID	Elem Ref. #	Sub-Ele Ref. #	Field Status	Field Name	Field Type	Length		Field Description			
						Min	Max				
N101	98		M	Entity Identification Code	ID	2	2	"OT" = Origin Terminal			
N102 is not used.											
N103	66		X	Identification Code Qualifier	ID	2	2	"TC" = IRS Terminal Code			
N104	67		X	Identification Code	AN	9	9	IRS Terminal Code (Code list is located at https://www.irs.gov/businesses/small-businesses-self-employed/terminal-control-number-ten-terminal-locations-directory)			
N1~OT~~TC~T99SC0000\											
Syntax Notes: N103 is required. If either N103 or N104 is present, then the other is required.											
FTA Notes: None											
SC Notes: Origin Terminal (Option 1) is required for all Terminal Operator Disbursements, Supplier Terminal Rack Removals, Supplier Receipts and Diversion Corrections. Either origin option 1 or origin option 2 is required for Transporter Deliveries. For all Terminal Operator Disbursements, when TFS006 (mode code) = BA, OT is required.											

Option 2

Point of Origin Name Segment 1										(One of the two options is used) Pos. No. 0500	
Element ID	Elem Ref. #	Sub-Ele Ref. #	Field Status	Field Name	Field Type	Length		Field Description			
						Min	Max				
N101	98		M	Entity Identification Code	ID	2	2	"SF" = Ship From			
N102	93		X	Name	AN	2	2	Origin State Abbreviation			
N1~SF~SC\											
Syntax Notes: N102 is required.											
FTA Notes: None											
SC Notes: Either origin option 1 or origin option 2 is required for Transporter Deliveries.											

Point of Origin Name Segment 1										Pos. No. 0500	
Element ID	Elem Ref. #	Sub-Ele Ref. #	Field Status	Field Name	Field Type	Length		Field Description			
						Min	Max				
N401	19		O	City Name	AN	2	30	Name of City			
N402	156		O	State or Province Code	ID	2	2	State or Providence Abbreviation			
N403	116		O	Postal Code	ID	3	11	ZIP or ZIP plus 4 Code			
N4~Myrtle Beach~SC~12345-1234\											
Syntax Notes: None											
FTA Notes: None											

Option 3

Point of Origin (One of the three options is used)								
Name Segment 1 Pos. No. 0500								
Element ID	Elem Ref. #	Sub-Ele Ref. #	Field Status	Field Name	Field Type	Length		Field Description
						Min	Max	
N101	98		M	Entity Identification Code	ID	2	2	"WO" = Storage Facility at Origin
N102 is not used.								
N103	66		X	Identification Code Qualifier	ID	2	2	"FA" = Facility Identification
N104	67		X	Identification Code	AN	2	20	Facility/License Number
N1~WO~~FA~123456\								
Syntax Notes: N103 is required. If either N103 or N104 is present, then the other is required.								
FTA Notes: None								

Seller Information Pos. No. 0500								
Name Segment 2								
Element ID	Elem Ref. #	Sub-Ele Ref. #	Field Status	Field Name	Field Type	Length		Field Description
						Min	Max	
N101	98		M	Entity Identification Code	ID	2	2	"SE" = Selling Party
N102	93		X	Name	AN	1	35	Seller's Name
N103	66		X	Identification Code Qualifier	ID	2	2	"24" = FEIN "34" = SSN
N104	67		X	Identification Code	AN	9	15	Seller's FEIN or SSN
N1~SE~Fuel Inc~24~516669999\								
Syntax Notes: At least one of N102 or N103 is required. If either N103 or N104 is present, then the other is required.								
FTA Notes: None								
SC Notes: Required for Supplier Tax Paid Receipts, Terminal Operator Disbursements, and Transporter Deliveries On Terminal Operator Disbursements, this may be the Exchange Receiver If TFS006 (mode code) = BA, SE is not required.								

Position Holder Information or Delivering Exchange Party Information Pos. No. 0500								
Name Segment 3								
Element ID	Elem Ref. #	Sub-Ele Ref. #	Field Status	Field Name	Field Type	Length		Field Description
						Min	Max	
N101	98		M	Entity Identification Code	ID	2	2	"ON" = Position Holder
N102	93		X	Name	AN	1	35	Position Holder's Name
N103	66		X	Identification Code Qualifier	ID	2	2	"24" = FEIN "34" = SSN
N104	67		X	Identification Code	AN	9	15	Position Holder's FEIN or SSN
N1~ON~ABC Fuel~24~516888888\								
Syntax Notes: At least one of N102 or N103 is required. If either N103 or N104 is present, then the other is required.								
FTA Notes: None								
SC Notes: Required for Terminal Operator Receipts and Disbursements If TFS006 (mode code) = BA, ON is required.								

Receiving Exchange Party Information								
Name Segment 3								Pos. No. 0500
Element ID	Elem Ref. #	Sub-Ele Ref. #	Field Status	Field Name	Field Type	Length		Field Description
						Min	Max	
N101	98		M	Entity Identification Code	ID	2	2	"EC" = Exchanger
N102	93		X	Name	AN	1	35	Exchanger's Name or Control Name (First 4 position of tax payer business name)
N103	66		X	Identification Code Qualifier	ID	2	2	"24" = FEIN "34" = SSN "F1" = Federal Taxpayer 637 ID Number "50" = BN - Canadian Business Number
N104	67		X	Identification Code	AN	9	15	Exchanger's FEIN or SSN or IRS 637 Number or BN
N1~EC~ABC Fuel~24~51688888\								
Syntax Notes: At least one of N102 or N103 is required. If either N103 or N104 is present, then the other is required.								
FTA Notes: None								

Person Hiring Carrier (Consignor)								
Name Segment 4								Pos. No. 0500
Element ID	Elem Ref. #	Sub-Ele Ref. #	Field Status	Field Name	Field Type	Length		Field Description
						Min	Max	
N101	98		M	Entity Identification Code	ID	2	2	"CI" = Consignor (Person Hiring the Carrier)
N102	93		X	Name	AN	1	35	Consignor Name or Name Control (First 4 position of tax payer business name)
N103	66		X	Identification Code Qualifier	ID	2	2	"24" = FEIN "34" = SSN "50" = BN - Canadian Business Number
N104	67		X	Identification Code	AN	9	15	Consignor's (Person Hiring the Carrier) FEIN or SSN or BN
N1~CI~ABC Distributing~24~51677777\								
Syntax Notes: At least one of N102 or N103 is required. If either N103 or N104 is present, then the other is required.								
FTA Notes: None								
SC Notes: Required for Transporter Deliveries								

Carrier Information								
Name Segment 5								Pos. No. 0500
Element ID	Elem Ref. #	Sub-Ele Ref. #	Field Status	Field Name	Field Type	Length		Field Description
						Min	Max	
N101	98		M	Entity Identification Code	ID	2	2	"CA" = Carrier Name
N102	93		X	Name	AN	1	35	Carrier Name
N103	66		X	Identification Code Qualifier	ID	2	2	"24" = FEIN "34" = SSN
N104	67		X	Identification Code	AN	9	15	Carrier's FEIN or SSN or BN
N1~CA~ABC Trucking~24~51666666\								
Syntax Notes: At least one of N102 or N103 is required. If either N103 or N104 is present, then the other is required.								
FTA Notes: None								
SC Notes: Required for all Supplier and Terminal Operator schedules If TFS006 (mode code) = BA, CA is not required.								

Buyer/Consignee Information									Pos. No. 0500	
Name Segment 6										
Element ID	Elem Ref. #	Sub-Ele Ref. #	Field Status	Field Name	Field Type	Length		Field Description		
						Min	Max			
N101	98		M	Entity Identification Code	ID	2	2	"BY" = Buying Party (Purchaser/Consignee)		
N102	93		X	Name	AN	1	35	Buyer Name		
N103	66		X	Identification Code Qualifier	ID	2	2	"24" = FEIN "34" = SSN		
N104	67		X	Identification Code	AN	9	15	Purchaser's FEIN or SSN or BN		
N1~Joe Gas Station~24~51722222\										
Syntax Notes: At least one of N102 or N103 is required. If either N103 or N104 is present, then the other is required.										
FTA Notes: None										
SC Notes: Required for Supplier Terminal Rack Removals, Supplier Diversion Corrections and Transporter Deliveries For Transporter Deliveries, the Buying Party Name and FEIN are also referred to as 'Delivered To' Name and FEIN on Form L-2185, Motor Fuel Transporter Schedule of Deliveries. If TFS006 (mode code) = BA, BY is not required.										

For Point (Address) of Delivery/Destination: (One of the following Options is Required)

Use Option 1 when the destination has an IRS TCN.

Use Option 2 when the destination does not have an IRS TCN.

Use Option 3 when the state requires a destination facility ID (currently used by the state of Florida).

Option 1

Point of Destination									(One of the two options is used)	
Name Segment 7									Pos. No. 0500	
Element ID	Elem Ref. #	Sub-Ele Ref. #	Field Status	Field Name	Field Type	Length		Field Description		
						Min	Max			
N101	98		M	Entity Identification Code	ID	2	2	"DT" = Destination Terminal		
N102 is not used.										
N103	66		X	Identification Code Qualifier	ID	2	2	"TC" = IRS Terminal Code		
N104	67		X	Identification Code	AN	9	9	IRS Terminal Code (Code list is located at https://www.irs.gov/businesses/small-businesses-self-employed/terminal-control-number-tcn-terminal-locations-directory)		
N1~DT~~TC~T99SC0000\										
Syntax Notes: N103 is required. If either N103 or N104 is present, then the other is required.										
FTA Notes: None										
SC Notes: Destination Terminal (Option 1) is required for all Terminal Operator Receipts. Either Destination option 1 or Destination option 2 is required for Terminal Operator Disbursements, Supplier Receipts, Supplier Terminal Rack Removals, Diversion Corrections and Transporter Deliveries For Transporter Deliveries, the Point of Destination is referred to as 'Delivered To Address' on Form L-2185, Motor Fuel Transporter Schedule of Deliveries. When mapping Diversion Corrections, map the REVISED destination. For all Terminal Operator Receipts, when TFS006 (mode code) = BA, DT is required.										

Option 2

Point of Destination								(One of the two options is used)	
Name Segment 7								Pos. No. 0500	
Element ID	Elem Ref. #	Sub-Ele Ref. #	Field Status	Field Name	Field Type	Length		Field Description	
						Min	Max		
N101	98		M	Entity Identification Code	ID	2	2	"ST" = Ship To	
N102	93		X	Name	AN	2	2	Destination State Abbreviation	
N1~ST~SC\									
Syntax Notes: N102 is required. If either N103 or N104 is present, then the other is required.									
FTA Notes: None									

Point of Destination								Pos. No. 0500	
Name Segment 7								Pos. No. 0500	
Element ID	Elem Ref. #	Sub-Ele Ref. #	Field Status	Field Name	Field Type	Length		Field Description	
						Min	Max		
N401	19	19	O	City Name	AN	2	30	Name of City	
N402	156	156	O	State or Province Code	ID	2	2	State or Province Abbreviation	
N403	116	116	O	Postal Code	ID	3	11	ZIP or ZIP plus 4 Code	
N4~Greenville~SC~12345-1234\									
Syntax Notes: None									
FTA Notes: None									

Option 3

Point of Destination								(One of the three options is used)	
Name Segment 7								Pos. No. 0500	
Element ID	Elem Ref. #	Sub-Ele Ref. #	Field Status	Field Name	Field Type	Length		Field Description	
						Min	Max		
N101	98		M	Entity Identification Code	ID	2	2	"WD" = Destination Facility	
N102 is not used.									
N103	66		X	Identification Code Qualifier	ID	2	2	"FA" = Facility Identification	
N104	67		X	Identification Code	AN	2	20	Facility/License Number	
N1~WD~FA~123456\									
Syntax Notes: N103 is required. If either N103 or N104 is present, then the other is required.									
FTA Notes: None									

This FGS loop begins the individual shipments within the TFS loop. It is repeated when one of the following values changes:
 Bill of Lading (Document) Number
 Bill of Lading Date (Date Shipped)
 Gallons/Liters.

Bill of Lading								Pos. No. 1000	
Forms Group Segment								Pos. No. 1000	
Element ID	Elem Ref. #	Sub-Ele Ref. #	Field Status	Field Name	Field Type	Length		Field Description	
						Min	Max		
FGS01	350		M	Assigned Identification	AN	1	1	"D" = Schedule Detail	
FGS02	128		X	Reference Identification Qualifier	ID	2	2	"BM" = Bill of Lading Number	
FGS03	127		X	Reference Identification	AN	1	15	Bill of Lading Number	
FGS~D~BM~00123456\									
Syntax Notes: If either FGS02 or FGS03 is present, then the other is required.									
FTA Notes: None									

Sequence ID Number								Pos. No. 0200	
Reference Number Segment								Pos. No. 0200	

Element ID	Elem Ref #	Sub-Ele Ref #	Field Status	Field Name	Field Type	Length		Field Description
						Min	Max	
REF01	128		M	Reference Identification Qualifier	ID	2	2	"55" = Sequence ID Number
REF02	127		X	Reference Identification	AN	1	7	Sequence Number
REF03	352		X	Description	AN	4	5	Error Response Code
REF~55~01234\								
Syntax Notes: REF02 is required.								
FTA Notes: REF02 is always required; REF03 is used when responding to an error								
SC Notes: REF03 is not used. See notes on sequence number on page 5-33								

Bill of Lading Date								Pos. No. 1200
Date/Time Reference Segment								
Element ID	Elem Ref #	Sub-Ele Ref #	Field Status	Field Name	Field Type	Length		Field Description
						Min	Max	
DTM01	374		M	Date/Time Qualifier	ID	3	3	"095" = Bill of Lading Date
DTM02	373		X	Date	DT	8	8	Bill of Lading Date (CCYYMMDD)
DTM~095~20010505\								
Syntax Notes: DTM02 is required.								
FTA Notes: None								

Bill of Lading Net								Pos. No. 1800
Tax Information and Amount Segment								
Element ID	Elem Ref #	Sub-Ele Ref #	Field Status	Field Name	Field Type	Length		Field Description
						Min	Max	
TIA01	817		M	Tax Information ID Number	AN	4	4	"5005" = Net
TIA02 and TIA03 are not used.								
TIA04	380		X	Quantity	R	1	15	Quantity
TIA05	355		M	Unit of Measurement Code	ID	2	2	"GA" = Gallons
TIA~5005~~~8000~GA\								
Syntax Notes: TIA04 is required. If TIA05 is present, then TIA04 is required.								
FTA Notes: None								
SC Notes: Mandatory for Supplier, Terminal Operator, and Transporter								

Bill of Lading Gross								Pos. No. 1800
Tax Information and Amount Segment								
Element ID	Elem Ref #	Sub-Ele Ref #	Field Status	Field Name	Field Type	Length		Field Description
						Min	Max	
TIA01	817		M	Tax Information ID Number	AN	4	4	"5006" = Gross
TIA02 and TIA03 are not used.								
TIA04	380		X	Quantity	R	1	15	Quantity
TIA05	355		M	Unit of Measurement Code	ID	2	2	"GA" = Gallons
TIA~5006~~~8000~GA\								
Syntax Notes: TIA04 is required. If TIA05 is present, then TIA04 is required.								
FTA Notes: None								
SC Notes: Mandatory for Supplier and Transporter - Optional for Terminal Operator								

Bill of Lading Billed								Pos. No. 1800	
Tax Information and Amount Segment									
Element ID	Elem Ref. #	Sub-Ele Ref. #	Field Status	Field Name	Field Type	Length		Field Description	
						Min	Max		
TIA01	817		M	Tax Information ID Number	AN	4	4	"5007" = Billed	
TIA02 and TIA03 are not used.									
TIA04	380		X	Quantity	R	1	15	Quantity	
TIA05	355		M	Unit of Measurement Code	ID	2	2	"GA" = Gallons	
TIA~5007~~~8000~GA\									
Syntax Notes: TIA04 is required. If TIA05 is present, then TIA04 is required.									
FTA Notes: None									
SC Notes: Mandatory for Supplier - Not Applicable for Terminal Operator or Transporter									

End of FGS loop for Individual shipments.
End of TFS loop for Schedule.

Transaction Set Trailer Description

End of Transaction Set Trailer Segment							(Required) Pos. No. 0100	
Element ID	Elem Ref #	Sub-Ele Ref #	Field Status	Field Name	Field Type	Length		Field Description
						Min	Max	
SE01	96		M	Number of Included Segments	N0	1	10	Number of segments (inserted by translator)
SE02	329		M	Transaction Set Control Number	AN	4	9	Determined by Filer (same value in ST02, unique control number)
SE~156~10001\								
Syntax Notes: None								
FTA Notes: None								

End of Transaction Set

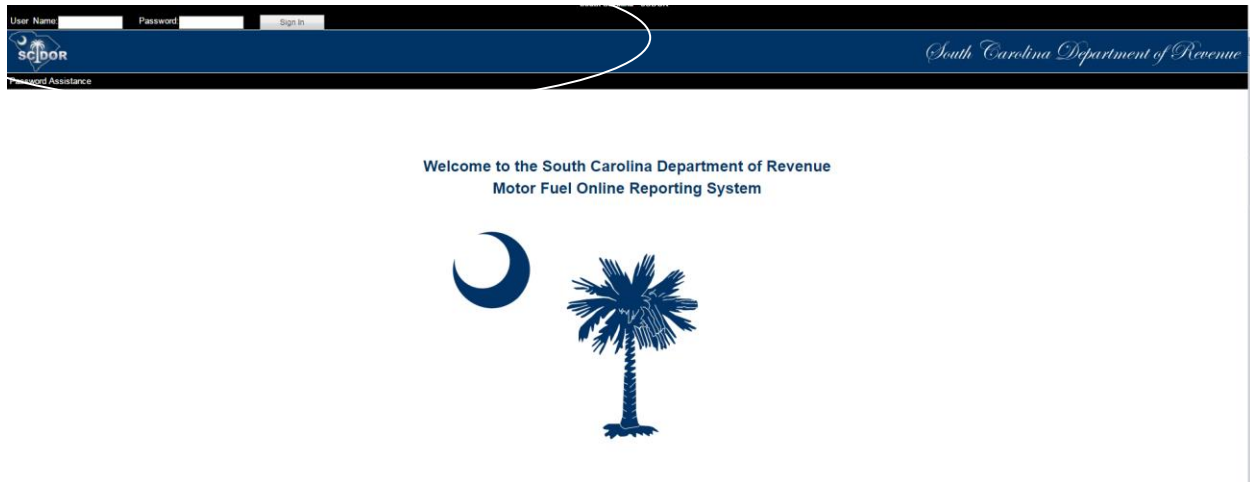
-

Chapter 6 – Acknowledgments

The SC Motor Fuel Online Reporting System will automatically notify the filer via email once the file processes and/or if errors occur. If the return is filed successfully, a Tracking Number will be assigned to the return for confirmation. **The user needs to make sure that all contact information is up to date so the notification will be received.**

Appendix A - EDI Upload Procedures

To upload a production file to the Motor Fuel Online Reporting System, go to zytax.dor.sc.gov and sign in to the Motor Fuel System with your user name and password to upload your EDI file.



There are two sources of getting help for usage of the South Carolina Motor Fuel Online Reporting System. They are as follows:

The South Carolina User Program Guide available online at dor.sc.gov/tax/motor-fuel/eservices

The ZyTax Government 5 User Guide is available on the Motor Fuel Online Reporting System, zytax.dor.sc.gov. Once signed in, click “Help” to open the Guide.

If there are any questions that the guides cannot answer, contact the SCDOR.

Help Desk	803-896-1715
Email	XML@dor.sc.gov
Fax	803-896-1779

Appendix B - Developer Registration

See following page for form.

1350



STATE OF SOUTH CAROLINA
DEPARTMENT OF REVENUE

D-154

(Rev. 6/7/22)

1111

dor.sc.gov

**DEVELOPER APPLICATION - MOTOR FUEL
ELECTRONIC DATA INTERCHANGE (EDI)**

Check return type(s) you will be developing for EFT/EDI:

Supplier (L-2119)

Terminal Operator (L-2098)

Transporter (L-2176)

Business Name _____

Address _____

City _____ State _____ ZIP _____

CONTACT INFORMATION

Primary Return Contact

Secondary Return Contact

Name _____

Name _____

Phone _____

Phone _____

Email _____

Email _____

EDI AUTHORIZATION

By submitting this application, the software developer agrees to develop the software using the ANSI X12 standards, versions, and mapping specifications currently in place for the SCDOR, agrees to follow all rules and edits outlined in this implementation guide, and agrees to fully test using the SC test package before distributing to SC users or when making significant changes to their software.

Email this application to: XML@dor.sc.gov

Appendix C - Schedules and Sub-Schedules

South Carolina Schedules

User Fee Type	Schedule Code	Description
Supplier	1	Gallons Received User Fee Paid
Supplier	5A	Gallons Removed Subjected to User Fee (Non-eligible Purchaser)
Supplier	5C	Gallons Removed Subjected to User Fee (Eligible Purchaser)
Supplier	5E	Gallons Removed User Fee Paid for Import by Importer
Supplier	5H	Gallons Removed User Fee Paid - For Export by Exporter
Supplier	6F	Gallons Removed - Dyed Diesel and Heating Oil
Supplier	6H	Gallons Removed User Fee Free Import by Licensed Importer
Supplier	7A	Gallons Removed for Export to _____ by Supplier (Dest State Tax Collected)
Supplier	7B	Gallons Removed for Export to _____ by Supplier (Dest State Tax Exempt)
Supplier	8	Gallons Removed for US Government Sales
Supplier	9C	Gallons Removed for SC Department of Education School Busses
Supplier	10B	Gallons Removed for Aviation Use
Supplier	10G	Gallons Removed for Exempt Sales
Supplier	11	State Diversion Corrections
Terminal Operator	15A	Terminal Operator Schedule of Receipts
Terminal Operator	15B	Terminal Operator Schedule of Disbursements
Transporter	14A	Total of all deliveries of fuels from a point inside South Carolina to a point outside South Carolina
Transporter	14B	Total of all deliveries of fuels from a point outside South Carolina to a point inside South Carolina
Transporter	14C	Total of all deliveries of fuels between two points in South Carolina

Appendix D - Product Codes

South Carolina Product Codes

Product Code	Description
065	Gasoline
072	Kerosene - dye added
092	Other/Substitute Fuel
122	Blending Components
E00	Ethanol
E01 – E99	Gasohol
125	Aviation Gasoline
130	Jet Fuel
142	Kerosene - undyed
167	Low Sulfur Diesel Fuel - undyed
226	High Sulfur Diesel Fuel - dye added
227	Low Sulfur Diesel Fuel - dye added
B00	Biodiesel – undyed
B01 – B99	Biodiesel blended with undyed diesel
D00	Biodiesel - dyed
D01 – D99	Biodiesel blended with dyed diesel

Appendix E - Summary Codes / TIA Codes

Summary Code and TIA Code Usage

Summary and TIA codes are used for the following purposes (See complete list of codes below.):

813 Map

1. Header – TIA code 5000 defines the version/publication number of the taxing authority’s EC Implementation Guide. TIA code 5001 (Total Net Reported) is a check value for determining if all information is included in the EDI file.
2. TOR – Terminal Operator Report or SDR - Supplier/Distributor Report - TIA code 5002 (Physical Inventory) is used to report Ending and/or Beginning Inventory.
3. SDR – Supplier/Distributor Report – TIA code 5003 (Total Due) is a check value used to acknowledge and validate user fee ability or gallons subject to user fees.
4. CCR – Common Carrier Report – TIA code 5004 (Total Net Transported) is a check value used to acknowledge and validate the report.
5. SUM - Summary Code and TIA codes are used for identifying information not found in schedules or able to be derived from the schedules. The SUM loop provides a looping structure allowing multiple TIAs in a uniform format
6. Schedules – TIA 5005 (Net), 5006 (Gross) and 5007 (Billed) are used to report bill of lading volume details or further define summary detail.
7. Summary codes are defined and utilized for both quantity and money. The TIA segment of the summary has elements for both quantity and monetary values.

Summary Codes

S01 Inventory

- S01A Net Gains / Losses
- S01B Casualty Loss
- S01C Product Transfer – Disbursement
- S01D Product Transfer – Receipt
- S01E Meter Test – Disbursement
- S01F Meter Test - Receipt

S02 Taxes / Fees

- S02A Tax
- S02B Transfer / Lust Fee
- S02C Inspection Fee
- S02D Other Environmental Fee
- S02E Gaseous Permit Fee

S03 Credit

- S03A Tax Credit
 - S03A01 Collection Allowance (IN – February 2002)
- S03B Fee Credit
 - S03B01 Transfer Fee Credit (MO – September 2001)
 - S03B02 Inspection Fee Credit (MO – September 2001)
- S03C Allowance

S04 Bad Debt Write-off

- S04A Tax Bad Debt Write-off
- S04B Fee Bad Debt Write-off

S05 General Return

- S05A Gallons/Liters Refined, Distilled or produced
- S05B Petroleum product repackaged into containers of 55 gallons or less
- S05C Ethanol Blended with Gasoline
- S05D Product Delivered
- S05E Other petroleum products first sold, offered for sale, or used in Nebraska
- S05F Total gallons of Motor Vehicle fuel first sold, offered for sale or used in Nebraska.
- S05G Untaxed diesel used in a licensed vehicle
- S05H Kerosene blended with diesel and used in a licensed vehicle
- S05I Other exempt removals (CA – May 2001)

FTA Uniformity TIA Codes

The data represented by these TIA codes is not derivable from schedules or represents a check value.		
5000	Version of taxing authority's implementation guide	Header
5001	Total Net Reported	Header
5002	Net Physical Inventory	TOR, SDR
5003	Total Due	SDR
5004	Total Net Transported	CCR
5005	Net	SCH, SUM
5006	Gross	SCH, SUM
5007	Billed	SCH, SUM
5008	Interest	SUM
5009	Penalty	SUM
5010	Confidential Information	Header
5011-5199	Not used	

Appendix F - Transaction Type Mode Codes

Transaction Type Mode Codes	
Code	Description
J_	Truck
R_	Rail
B_	Barge
S_	Ship
PL	Pipeline
GS	Gas Station
BA	Book Adjustment
ST	Stationary Transfer
CE	Summary Information
RT	Removal from Terminal (other than by truck or Rail) for sale or consumption

The ‘_’ in the code table represent a space. The X12 standard requires 2 characters in the field using this code

Appendix G - USA States, Canadian Provinces/ Territories, and Mexican States Codes

United States of America (US) State	Abbreviation	Canadian (CA) Province/Territory	Abbreviation
Alabama	AL	Alberta	AB
Alaska	AK	British Columbia	BC
Arizona	AZ	Manitoba	MB
Arkansas	AR	New Brunswick	NB
California	CA	Newfoundland	NF
Colorado	CO	Northwest Territory	NT
Connecticut	CT	Nova Scotia	NS
Delaware	DE	Nunavut	NU
District of Columbia	DC	Ontario	ON
Florida	FL	Prince Edward Island	PE
Georgia	GA	Quebec	QC
Hawaii	HI	Saskatchewan	SK
Idaho	ID	Yukon Territory	YT
Illinois	IL		
Indiana	IN	Mexican (MX) State	Abbreviation
Iowa	IA	Aguaascalientes	AG
Kansas	KS	Baja California	BJ
Kentucky	KY	Baja California Sur	BS
Louisiana	LA	Campeche	CP
Maine	ME	Chiapas	CH
Maryland	MD	Chihuahua	CI
Massachusetts	MA	Coahuila	CU
Michigan	MI	Colima	CL
Minnesota	MN	Distrito Federal	DF
Mississippi	MS	Durango	DG
Missouri	MO	Guanajuato	GJ
Montana	MT	Guerrero	GR
Nebraska	NE	Hidalgo	HG
Nevada	NV	Jalisco	JA
New Hampshire	NH	Mexico	EM
New Jersey	NJ	Michoacan	MH
New Mexico	NM	Morelos	MR
New York	NY	Nayarit	NA
North Carolina	NC	Nuevo Leon	NL
North Dakota	ND	Oaxaca	OA
Ohio	OH	Puebla	PU
Oklahoma	OK	Queretaro	QA
Oregon	OR	Quintana Roo	QR
Pennsylvania	PA	San Luis Potosi	SL

Rhode Island	RI	Sinaloa	SI
South Carolina	SC	Sonora	SO
South Dakota	SD	Tabasco	TA
Tennessee	TN	Tamaulipas	TM
Texas	TX	Tlaxcala	TL
Utah	UT	Veracruz	VZ
Vermont	VT	Yucatan	YC
Virginia	VA	Zacatecas	ZT
Washington	WA		
West Virginia	WV		
Wisconsin	WI		
Wyoming	WY		

Appendix H - Software Edits

The tables on the preceding pages show most of the edits that will be performed on your 813. However, listed below are additional edits that should be performed. We strongly recommend you incorporate these edits into your software to further ensure the accuracy of the user fee reporting and to minimize the possibility of the 813 being rejected.

User Fee Edits

1. **Prior period adjustments and late loads that originated at any time other than the month immediately prior to the current filing period should not be reported on a current monthly return.** Amendments must be filed reflecting only these adjustments or additions for each filing period. Any supplier that includes these adjustments or additions on a current return will be issued an assessment that will include applicable interest and may include a penalty in the amount of 5% per month (not to exceed 25%) of the user fee due per SC Code Section 12-28-1730 (H). Refusal to comply with this requirement could result in license revocation per SC Code Section 12-54-90. See Amended Return Section.

2. The maximum amount of Tare Allowance for gasoline and special fuel combined cannot exceed \$2,000 per month.

Note: Suppliers are not entitled to a tare allowance deduction for gallons subject to user fee sold to a fuel vendor with eligible purchaser status.

EDI Edits

3. It is critical that software programs be capable of translating 997 codes into user-friendly language for correction purposes. If the codes are not translated within the software, users will be referred to software developers for translation of any 997 error code.

4. Freeze all data after each transmission to ensure a proper audit trail. Do not allow transmitted data to be altered.

5. ISA15 data element field in the interchange control header segment determines the test/production status of the transmission. If the ISA15 is set to a "T", then the 813 will be considered test data and if it is set to "P" then it will be considered production.

6. BTI10 must be populated with the user's Supplier, Terminal Operator, and Transporter license number. The license number is a nine-digit number.

NOTE: Please ensure that your software uses the above calculation to verify the license number is correct before sending an 813 transaction. This number will be checked for accuracy once your 813 transaction set is received at the SCDOR. If it is found to be invalid, your 813 will be rejected.

7. The value used in BTI12 will be a software provider code issued by the SCDOR. It will be issued to each software provider as they register with the SCDOR.

Note: For users who are developing their own EDI, please use "X12" in the BTI12 field.

Amended Returns

You must refer to Appendix J for the complete listing on Amended returns.

Special Notes:

8. If Schedule 5A is affected by the amendment, the TARE must be recalculated based on the original and all amendments, not to exceed \$2000.00 per month for gasoline and diesel combined.
9. If schedule 5A and / or schedule 5C are affected by the amendment, the Administrative Allowance needs to be recalculated prior to submitting the amendment.
10. If the calculation total in TIA 5003 includes Penalty and Interest, then your TIA 5003 must include the sum of TIA 5005, 5008 and 5009.

Appendix I - Return and Schedule Formatting Requirements

The SCDOR has previously published instructions for completing the following forms and supporting schedules:

Form L-2098 – Motor Fuel Terminal Operator Monthly Report

- L-2099 – Terminal Operator Schedule of Receipts
 - L-2100 – Terminal Operator Schedule of Disbursements
- Form L-2119 – Motor Fuel Suppliers Monthly User Fee and Calculation

- L-2102 – Supplier Schedule of State Diversion Corrections
- L-2103 – Supplier Schedule of Terminal Rack Removals
- L-2122 – Supplier Schedule of User-Paid Receipts

Form L-2176 – Motor Fuel Transporter Monthly Report

- L-2185 – Motor Fuel Transporter Schedule

The L-2098, Motor Fuel Terminal Operator Monthly Report; L-2119, Motor Fuel Suppliers Monthly User Fee and Calculation; and L-2176, Motor Fuel Transporter Monthly Report will be created on the actual South Carolina form or on a replica which matches the State format.

The following is a recap of the required schedule format for supporting schedules.

L-2099 – Terminal Operator Schedule of Receipts

- List each product in ascending order and report on a separate page.
- List receipts by product code in ascending order.
- Within each product, list receipts by carrier/transporter name (pipeline) in ascending order.
- Within each carrier/transporter, list transactions by position holder name (supplier) in ascending order.
- Then within each position holder, list transactions by document number (pipeline reference number) in ascending order.
- Print subtotals by position holder and by carrier.
- Print totals by product.

L-2100 – Terminal Operator Schedule of Disbursements

- List each product in ascending order and report on a separate page.
- Within each product, list disbursements by destination state in ascending order.
- Within each state, list transactions by supplier name in ascending order.
- Then within each supplier, list transactions by document number (bill of lading) in ascending order. Print subtotals by supplier and state.
- Print totals by product.

L-2102 – Supplier Schedule of State Diversion Corrections

- List each product in ascending order and report on a separate page.
- Within each product, list diversion corrections by diversion number in ascending order.

L-2103 – Supplier Schedule of Terminal Rack Removals

- Each schedule code should be reported on a separate page
- Within each schedule, list each product in ascending order and report on a separate page.
- Within each product, list transactions by origin terminal code
- Within each terminal, list the transactions in ascending order by purchaser name.
- Within each purchaser, list the transactions in ascending order by document number (bill of lading).
- Print a total for each terminal.

L-2122 – Supplier Schedule of User-Paid Receipts

- List each product in ascending order and report on a separate page.
- Within each product, list transactions by supplier name in ascending order
- Within each supplier, list receipts by origin terminal code with a total for each terminal.
- Within each terminal, list the transactions in ascending order by document number (bill of lading).
- Print a total for each Supplier

L-2185 – Motor Fuel Transporter Schedule

- Each schedule code should be reported on a separate page
- Within each schedule, list each product in ascending order and report on a separate page.
- Within each product schedule categorize deliveries by destination state with a total for each state. (Destination state will be South Carolina for Schedules 14B and 14C).
- Within each product and schedule, categorize deliveries first by origin terminal code with a total for each terminal.
- Within each origin terminal listing, sort deliveries by seller name and include a subtotal for each seller.
- Arrange deliveries in ascending order by document number (bill of lading).
- Print totals by product.

Appendix J - Book Adjustments

Book Adjustments Requiring Corresponding Entries

In the State of South Carolina, rebranding of products is to be reported by a book adjustment (BA). Rebranding, the above the rack transfer of one product into storage of another product, must be reported by a book adjustment reflecting a disbursement terminal (15B) of one product and a corresponding terminal receipt (15A) of the second product. The product codes for the disbursements and receipts should be different, but the total gallons for the receipts and disbursements must be the same.

Example 1

You have a customer who needs 10,000 gallons of high-sulfur diesel. Your terminal is low on high sulfur diesel (226) but has an abundance of kerosene (072). You decide to move the kerosene into the high sulfur diesel fuel storage to accommodate your customer's needs. You would need to create an entry that would decrease your terminal's kerosene inventory and increase your terminal's high sulfur diesel inventory. You would need two book adjustment entries, the first being a 10,000 gallon entry to your terminal disbursements (15B) for kerosene (072) and second entry to record the receipt (15A) of the high sulfur diesel (226). The mapping would read as follows:

Disbursement

TFS~T3~15B~PG~072~94~BA\ REF~55~325\ N1~OT~~TC~T57SC0000\ N1~ON~Tiger Terminal~24~571234567\ FGS~D~BM~REBRAND\ REF~55~326\ DTM~095~20041020\ TIA~5005~~~10000~GA\ TIA~5006~~~10000~GA\ 	Book Adjustment for product code 072 Terminal where rebrand happened Owner of product in terminal Date the rebrand took place Gross amount of gallons in rebrand
--	--

Receipt

TFS~T3~15A~PG~226~94~BA\ REF~55~327\ N1~DT~~TC~T57SC0000\ N1~ON~Tiger Terminal~24~571234567\ FGS~D~BM~REBRAND\ REF~55~328\ DTM~095~20041020\ TIA~5005~~~10000~GA\ TIA~5006~~~10000~GA\ 	Book Adjustment for product code 226 Terminal where rebrand happened Owner of product in terminal Date the rebrand took place Gross amount of gallons in rebrand
--	--

The SCDOR requests that all adjustments of this type be filed with the bill of lading number reading 'REBRAND.'

Book Adjustments Requiring Only 1 Entry

If there is a transfer that involves a non-reporting product, there would only be an entry showing the disbursement of the non-reporting product. There would be no corresponding entry.

Please see the above Disbursement mapping for an example.

Appendix K - Amended Returns

What is an amended return?

An amended return is any data reported to the SCDOR that adjusts or corrects an original user filing.

How should I file an amended return?

The amended should be filed by the same method the original was submitted. For example, if the original was filed by paper, then the amended must be filed by paper. Like wise, if the original was submitted by EDI, then the amended must be submitted by EDI. Do NOT mix the two. If an original is submitted by paper and the amendment is submitted by EDI, it will not be processed.

What file name should an amended return carry?

It will follow the normal naming conventions, noting that the reporting year and month corresponds to the year and month being amended. See File Naming Conventions Section.

** Original returns rejected for EDI syntax errors are NOT to be resubmitted as Amended returns. See File Naming Conventions Section.

Can I put amendments for different periods in one envelope?

No, amendments for different periods should not be submitted in one envelope. Each file name carries the period covered of the file. If multiple periods are included in one file, then your filing can not be uniquely identified.

What information is needed when filing an Amended return?

The SCDOR requires only the amended transaction(s) be filed along with ALL the summary (TIA) segments reflecting only the total of the amendment(s), even if the segment results in a 0 value. All summary segments are required regardless of whether or not there has been a change. If all segments are not present, the return will be rejected.

When must I recalculate the TARE allowance?

If the total for Schedule 5A, Gallons Removed Subject to User Fee (Non-eligible Purchasers), is increased or decreased by the amendment, the TARE must be recalculated in order to arrive at the corrected user fee amount due or amount to be refunded.

How do I recalculate the TARE allowance for an amendment?

The TARE is recalculated based on the revised total for Schedule 5A, Gallons Removed Subject to User Fee (Non-eligible Purchasers), and must be adjusted by the TARE allowance that was claimed on the original return and on any previous amendments, if applicable, not to exceed \$2000.00 per month for gasoline and diesel combined.

When do I recalculate the Administrative Allowance?

If totals from Schedule 5A, Gallons Removed Subject to User Fee (Non-eligible Purchasers), and/or Schedule 5C, Gallons Removed Subject to User Fee (Eligible Purchasers), are increased or decreased by the amendment, the Administrative Allowance must be recalculated in order to arrive at the corrected user fee amount due or amount to be refunded.

What if the transaction needs to be reported on a prior period but has already been filed on an original return with an incorrect period?

If the transaction has been filed on an original return with an incorrect period, you will need to file an amended return with a negative entry for that period to back out the original transaction. Then file the transaction as an amended reporting the correct period.

For example: A March transaction reported as an April transaction on an April original return should be reversed by sending a negative entry on an April amended return and then filing a positive entry on a March amended return.

How do I correct a return that was originally filed with an out of period transaction that has been rejected?

The software package should create two separate filings.

- 1) Original return without the late loads (Any transactions other than the month immediately prior to the current filing).
- 2) An amended return properly reporting out of period transactions.

Example: April 2004 original return contained a late load that should have been reported on the February 2004 return.

The following is needed to correctly adjust the late load:

- 1) Resubmit the April 2004 return, without the late load.
- 2) File an amendment for February 2004 return to reflect the adjustment.

Special Note:

Prior period adjustments and late loads that originated at any time other than the month immediately prior to the current filing period should not be reported on a current monthly return. Amendments must be filed reflecting only these adjustments or additions for each filing period. Any supplier that includes these adjustments or additions on a current return will be issued an assessment that will include applicable interest and may include a penalty in the amount of 5% per month (not to exceed 25%) of the user fee due per SC Code Section 12-28-1730 (H). Refusal to comply with this requirement could result in license revocation per SC Code Section 12-54-90. See Amended Return Section.

Appendix L - Sample EDI Files

Supplier (SDR)

(Formatted with carriage returns for viewing – in an actual filing, carriage returns would be omitted.) The Supplier Return should be within its own ST/SE loop.

Note: Matching Sample Return and Schedules follow.

```

ISA~00~                ~00~                ~ZZ~111444555                ~ZZ~SCDOR
~150623~1431~|~00403~000003003~0~T~^\  

GS~TF~111444555~SCDOR~20150623~143118~3003~X~004030\  

ST~813~3003~2\  

BTI~T6~050~47~SCDOR~20150623~RAIN~24~111444555~49~371014713~SV~SCMFUEL0602~00\  

DTM~194~20180930\  

TIA~5001~~~~80590~GA\  

N1~TP~RAINY DAY PETROLEUM\  

N3~11 CLOUD STREET\  

N4~COLUMBIA~SC~29214~US\  

PER~CN~TRACI
BULLOCK~TE~8038961748~FX~8038961779~EM~TBULLOCK@RAINYDAYPETROLEUM.COM\  

PER~EA~TRACI
BULLOCK~TE~8038961748~FX~8038961779~EM~TBULLOCK@RAINYDAYPETROLEUM.COM\  

N1~31~RAINY DAY PETROLEUM\  

N3~11 CLOUD STREET\  

N4~COLUMBIA~SC~29214~US\  

TFS~T2~SDR\  

REF~55~1\  

TIA~5003~8770.29~~80590~GA\  

TFS~T3~S02A~PG~065~94~CE\      Gasoline User Fee
REF~55~2\  

FGS~S\  

REF~55~3\  

TIA~5005~0.00\                  Amount                (Line 1 of Supplier return)
TIA~5008~0.00\                  Penalty                (Line 6 of Supplier return)
TIA~5009~0.00\                  Interest                (Line 7 of Supplier return)
TFS~T3~S03C~PG~065~94~CE\      Gasoline Tare Allowance
REF~55~4\  

FGS~S\  

REF~55~5\  

TIA~5005~0.00\                  Amount                (Line 2 of Supplier return)
TFS~T3~S03A01~PG~065~94~CE\    Gasoline Administrative Allowance
REF~55~6\  

FGS~S\  

REF~55~7\  

TIA~5005~0.00\                  Amount                (Line 3 of Supplier return)
TFS~T3~S03A~PG~065~94~CE\      Gasoline Tax Credit
REF~55~8\  

FGS~S\  

REF~55~9\  

TIA~5005~0.00\                  Amount                (Line 4 of Supplier return)

```

TFS~T3~S02A~PG~167~94~CE\
REF~55~10\
FGS~S\
REF~55~11\
TIA~5005~8345.00\
TIA~5008~0.00\
TIA~5009~0.00\
TFS~T3~S03C~PG~167~94~CE\
REF~55~12\
FGS~S\
REF~55~13\
TIA~5005~0.00\
TFS~T3~S03A~PG~167~94~CE\
REF~55~14\
FGS~S\
REF~55~15\
TIA~5005~0.00\
TFS~T3~S03A01~PG~167~94~CE\
REF~55~16\
FGS~S\
REF~55~17\
TIA~5005~8.35\
TFS~T3~S02C\
REF~55~18\
FGS~S\
REF~55~19\
TIA~5005~144.55\
TIA~5008~0.00\
TIA~5009~0.00\
TFS~T3~S03B02\
REF~55~20\
FGS~S\
REF~55~21\
TIA~5005~0.00\
TFS~T3~S02D\
REF~55~22\
FGS~S\
REF~55~23\
TIA~5005~289.09\
TIA~5008~0.00\
TIA~5009~0.00\
TFS~T3~S03B\
REF~55~24\
FGS~S\
REF~55~25\
TIA~5005~0.00\
TFS~T3~5C~PG~167~94~J \
REF~55~26\
N1~OT~~TC~T56NC2034\
N1~CA~BOB GAS COMPANY~24~123456789\
N1~BY~BOB GAS COMPANY~24~123456789\
N1~ST~SC\
FGS~D~BM~664064\
REF~55~27\
Special Fuels User Fee
Amount (Line 9 of Supplier return)
Penalty (Line 14 of Supplier return)
Interest (Line 15 of Supplier return)
Special Fuels Tare Allowance
Amount (Line 10 of Supplier return)
Special Fuels Tax Credit
Amount (Line 12 of Supplier return)
Special Fuels Administrative Allowance
Amount (Line 11 of Supplier return)
Inspection Fees
Amount (Line 17 of Supplier return)
Penalty (Line 19 of Supplier return)
Interest (Line 20 of Supplier return)
Inspection Fees Credit
Amount (Line 18 of Supplier return)
Environmental Impact Fees
Amount (Line 22 of Supplier return)
Penalty (Line 24 of Supplier return)
Interest (Line 25 of Supplier return)
Environmental Impact Fees Credit
Amount (Line 23 of Supplier return)

DTM~095~20180929\
TIA~5005~~~7540~GA\
TIA~5006~~~7540~GA\
TIA~5007~~~7540~GA\
TFS~T3~5C~PG~167~94~J \
REF~55~28\
N1~OT~~TC~T57SC2052\
N1~CA~BOB GAS COMPANY~24~123456789\
N1~BY~BOB GAS COMPANY~24~123456789\
N1~ST~SC\
FGS~D~BM~174672\
REF~55~29\
DTM~095~20180921\
TIA~5005~~~3096~GA\
TIA~5006~~~3096~GA\
TIA~5007~~~3096~GA\
FGS~D~BM~174672\
REF~55~30\
DTM~095~20180921\
TIA~5005~~~3392~GA\
TIA~5006~~~3392~GA\
TIA~5007~~~3392~GA\
FGS~D~BM~174742\
REF~55~31\
DTM~095~20180922\
TIA~5005~~~3179~GA\
TIA~5006~~~3179~GA\
TIA~5007~~~3179~GA\
FGS~D~BM~174787\
REF~55~32\
DTM~095~20180922\
TIA~5005~~~3178~GA\
TIA~5006~~~3178~GA\
TIA~5007~~~3178~GA\
TFS~T3~5C~PG~167~94~J \
REF~55~33\
N1~OT~~TC~T57SC2060\
N1~CA~SLEEPY OIL~24~111222555\
N1~BY~BOB GAS COMPANY~24~123456789\
N1~ST~SC\
FGS~D~BM~6230334\
REF~55~34\
DTM~095~20180902\
TIA~5005~~~1004~GA\
TIA~5006~~~1004~GA\
TIA~5007~~~1004~GA\
TFS~T3~5C~PG~167~94~J \
REF~55~35\
N1~OT~~TC~T57SC2060\
N1~CA~SLEEPY OIL~24~111222555\
N1~BY~FREEDOM OIL~24~777333888\
N1~ST~SC\
FGS~D~BM~6235608\
REF~55~36\

DTM~095~20180913\
TIA~5005~~~1495~GA\
TIA~5006~~~1495~GA\
TIA~5007~~~1495~GA\
TFS~T3~5C~PG~167~94~J \
REF~55~37\
N1~OT~~TC~T57SC2060\
N1~CA~SLEEPY OIL~24~111222555\
N1~BY~FREEDOM OIL~24~777333888\
N1~ST~SC\
FGS~D~BM~6231272\
REF~55~38\
DTM~095~20180904\
TIA~5005~~~3994~GA\
TIA~5006~~~3994~GA\
TIA~5007~~~3994~GA\
FGS~D~BM~62301110\
REF~55~39\
DTM~095~20180903\
TIA~5005~~~498~GA\
TIA~5006~~~498~GA\
TIA~5007~~~498~GA\
FGS~D~BM~6230935\
REF~55~40\
DTM~095~20180903\
TIA~5005~~~2195~GA\
TIA~5006~~~2195~GA\
TIA~5007~~~2195~GA\
FGS~D~BM~6230872\
REF~55~41\
DTM~095~20180903\
TIA~5005~~~1002~GA\
TIA~5006~~~1002~GA\
TIA~5007~~~1002~GA\
FGS~D~BM~6230808\
REF~55~42\
DTM~095~20180903\
TIA~5005~~~3794~GA\
TIA~5006~~~3794~GA\
TIA~5007~~~3794~GA\
FGS~D~BM~6230653\
REF~55~43\
DTM~095~20180903\
TIA~5005~~~1000~GA\
TIA~5006~~~1000~GA\
TIA~5007~~~1000~GA\
TFS~T3~6F~PG~227~94~J \
REF~55~44\
N1~OT~~TC~T57SC2060\
N1~CA~SLEEPY OIL~24~111222555\
N1~BY~FREEDOM OIL~24~777333888\
N1~ST~SC\
FGS~D~BM~6230747\
REF~55~45\

DTM~095~20180903\
TIA~5005~~~7094~GA\
TIA~5006~~~7094~GA\
TIA~5007~~~7094~GA\
FGS~D~BM~6230810\
REF~55~46\
DTM~095~20180903\
TIA~5005~~~1001~GA\
TIA~5006~~~1001~GA\
TIA~5007~~~1001~GA\
FGS~D~BM~6230651\
REF~55~47\
DTM~095~20180903\
TIA~5005~~~501~GA\
TIA~5006~~~501~GA\
TIA~5007~~~501~GA\
FGS~D~BM~6231702\
REF~55~48\
DTM~095~20180905\
TIA~5005~~~7497~GA\
TIA~5006~~~7497~GA\
TIA~5007~~~7497~GA\
TFS~T3~7A~PG~167~94~J \
REF~55~49\
N1~OT~~TC~T57SC2060\
N1~CA~SLEEPY OIL~24~111222555\
N1~BY~FREEDOM OIL~24~777333888\
N1~ST~GA\
FGS~D~BM~6233635\
REF~55~50\
DTM~095~20180909\
TIA~5005~~~1497~GA\
TIA~5006~~~1497~GA\
TIA~5007~~~1497~GA\
TFS~T3~7A~PG~167~94~J \
REF~55~51\
N1~OT~~TC~T57SC2060\
N1~CA~SLEEPY OIL~24~111222555\
N1~BY~FREEDOM OIL~24~777333888\
N1~ST~GA\
FGS~D~BM~6230844\
REF~55~52\
DTM~095~20180903\
TIA~5005~~~1997~GA\
TIA~5006~~~1997~GA\
TIA~5007~~~1997~GA\
FGS~D~BM~6231429\
REF~55~53\
DTM~095~20180904\
TIA~5005~~~995~GA\
TIA~5006~~~995~GA\
TIA~5007~~~995~GA\
FGS~D~BM~6230881\
REF~55~54\

DTM~095~20180903\
TIA~5005~~~3792~GA\
TIA~5006~~~3792~GA\
TIA~5007~~~3792~GA\
FGS~D~BM~6231290\
REF~55~55\
DTM~095~20180904\
TIA~5005~~~6006~GA\
TIA~5006~~~6006~GA\
TIA~5007~~~6006~GA\
FGS~D~BM~6231009\
REF~55~56\
DTM~095~20180903\
TIA~5005~~~995~GA\
TIA~5006~~~995~GA\
TIA~5007~~~995~GA\
TFS~T3~7B~PG~227~94~J \
REF~55~57\
N1~OT~~TC~T57SC2060\
N1~CA~SLEEPY OIL~24~111222555\
N1~BY~FREEDOM OIL~24~777333888\
N1~ST~GA\
FGS~D~BM~6233635\
REF~55~58\
DTM~095~20180909\
TIA~5005~~~5988~GA\
TIA~5006~~~5988~GA\
TIA~5007~~~5988~GA\
TFS~T3~7B~PG~227~94~J \
REF~55~59\
N1~OT~~TC~T57SC2060\
N1~CA~SLEEPY OIL~24~111222555\
N1~BY~FREEDOM OIL~24~777333888\
N1~ST~GA\
FGS~D~BM~6231290\
REF~55~60\
DTM~095~20180904\
TIA~5005~~~1502~GA\
TIA~5006~~~1502~GA\
TIA~5007~~~1502~GA\
TFS~T3~5C~PG~167~94~J \
REF~55~61\
N1~OT~~TC~T57SC2052\
N1~CA~BOB GAS COMPANY~24~123456789\
N1~BY~BOB GAS COMPANY~24~123456789\
N1~ST~SC\
FGS~D~BM~174742\
REF~55~62\
DTM~095~20180922\
TIA~5005~~~3180~GA\
TIA~5006~~~3180~GA\
TIA~5007~~~3180~GA\
FGS~D~BM~174787\
REF~55~63\

DTM~095~20180922\
TIA~5005~~~3178~GA\
TIA~5006~~~3178~GA\
TIA~5007~~~3178~GA\
SE~312~3003\
GE~1~3003\
IEA~1~000003003\



dor.sc.gov



STATE OF SOUTH CAROLINA
DEPARTMENT OF REVENUE
**MOTOR FUEL SUPPLIERS MONTHLY USER FEE
AND FEE CALCULATION**

L-2119

4207

<input type="checkbox"/> Amended Return SUPPLIER NAME AND ADDRESS RAINY DAY PETROLEUM 11 CLOUD STREET COLUMBIA, SC 29214	License Number
	371014713
	FEIN
	111444555
Period Covered 09/2018	

USER FEE AND OTHER APPLICABLE FEE CALCULATIONS

1.	Gasoline User Fee Collected (See Instructions)	0.00
2.	Less Tare Allowance	0.00
3.	Less Administration Allowance	0.00
4.	Less Credit ▶	0.00
5.	Net Gasoline User Fee Due ▶	0.00
6.	Penalty ▶	0.00
7.	Interest ▶	0.00
8.	Total Gasoline User Fee Due	0.00
9.	Special Fuels User Fee Collected (See Instructions)	8,345.00
10.	Less Tare Allowance	0.00
11.	Less Administration Allowance	8.35
12.	Less Credit ▶	0.00
13.	Net Special Fuels User Fee Due ▶	8,336.65
14.	Penalty ▶	0.00
15.	Interest ▶	0.00
16.	Total Special Fuels User Fee Due	8,336.65
17.	Inspection Fees Collected (See Instructions) ▶	144.55
18.	Less Credit ▶	0.00
19.	Penalty ▶	0.00
20.	Interest ▶	0.00
21.	Total Inspection Fees Due	144.55
22.	Environmental Impact Fees Collected (See Instructions) ▶	289.09
23.	Less Credit ▶	0.00
24.	Penalty ▶	0.00
25.	Interest ▶	0.00
26.	Total Environmental Impact Fees Due	289.09
27.	Total Fees Due, Plus Penalty and Interest ▶	
	Add lines 8, 16, 21 and 26.	8,770.29



CALCULATION PAGE - SUPPLIER

L-2119

42072025

ADJUSTMENT			Gasoline/ Gasohol	Undyed Diesel/ Biodiesel	Dyed Fuel	Undyed/Dyed Kerosene	Aviation Gasoline	Jet Fuel	Other/Substitute Fuel
▶ 1.	STATE DIVERSION CORRECTIONS	SCHD 11	0	0	0	0	0	0	0
▶ 2.	GALLONS RECEIVED USER FEE PAID	SCHD 1	0	0	0	0	0	0	0
▶ 3.	GALLONS REMOVED USER FEE FREE IMPORT BY LICENSED IMPORTER	6-H	0	0	0	0	0	0	0
EXPORTS									
▶ 4.	GALLONS REMOVED FOR EXPORT (DEST STATE TAX COLLECTED)	7-A	0	15,282	0	0	0	0	0
▶ 5.	GALLONS REMOVED FOR EXPORT (DEST STATE TAX EXEMPT)	7-B	0	0	7,490	0	0	0	0
▶ 6.	TOTAL GALLONS REMOVED FOR EXPORT (LINE 4 + LINE 5)	CALC	0	15,282	7,490	0	0	0	0
EXEMPT SALES									
▶ 7.	GALLONS REMOVED FOR US GOVERNMENT SALES	8	0	0	0	0	0	0	0
▶ 8.	GALLONS REMOVED FOR SC DEPT OF EDUC SCHOOL BUSES	9-C	0	0					0
▶ 9.	GALLONS REMOVED FOR AVIATION USE	10-B					0	0	0
▶ 10.	GALONS REMOVED FOR OTHER EXEMPT SALES	10-G	0	0	0	0	0	0	0
▶ 11.	TOTAL GALLONS REMOVED FOR EXEMPT SALES (TOTAL OF LINES 7 THROUGH 10)	CALC	0	0	0	0	0	0	0
▶ 12.	GALLONS REMOVED DYED FUELS	6-F			16,093	0			
▶ 13.	TOTAL GALLONS REMOVED EXEMPT FROM STATE USER FEE (LINE 11 + LINE 12)	CALC	0	0	16,093	0	0	0	0
SALES SUBJECT TO USER FEE			Gasoline/ Gasohol	Undyed Diesel/ Biodiesel	Dyed Fuel	Undyed/Dyed Kerosene	Aviation Gasoline	Jet Fuel	Other/Substitute Fuel
▶ 14.	GALLONS REMOVED SUBJECT TO USER FEE - (NON-ELIGIBLE PURCHASER)	5-A	0	0					0
▶ 15.	GALLONS REMOVED SUBJECT TO USER FEE - (ELIGIBLE PURCHASER)	5-C	0	41,725					0
▶ 16.	GALLONS REMOVED USER FEE PAID FOR IMPORT BY IMPORTER	5-E	0	0					0
▶ 17.	GALLONS REMOVED USER FEE PAID FOR EXPORT BY EXPORTER	5-H	0	0					0
▶ 18.	TOTAL GALLONS REMOVED SC USER FEE PAID (LINE 4 + LINE 15 + LINE 16 + LINE 17)	CALC	0	41,725					0
▶ 19.	TOTAL GALLONS REMOVED SUBJECT TO USER FEE (LINE 18 + LINE 1 - LINE 2 - LINE 3)	CALC	0	41,725					0
▶ 20.	TOTAL GALLONS REMOVED SUBJECT TO OTHER FEES (LINE 13 + LINE 18 + LINE 1 - LINE 2 - LINE 3 - LINE 7)	CALC	0	41,725	16,093	0	0	0	0

Penalties - Failure to file a return will result in a penalty of five percent (5%) for the first month plus five percent (5%) for each additional month not to exceed a total of twenty-five percent (25%). Failure to pay will result in penalties of one half of one percent (.5%) per month not to exceed twenty-five percent (25%). Other penalties may apply.

Interest - Interest on all overdue accounts will be assessed at the rate provided under Section 6621 and 6622 of the Internal Revenue Code. Rates will change quarterly depending on the prime rate. In addition, interest will be compounded daily.

I hereby certify that the information contained in this return (including all attachments) has been examined by me and to the best of my knowledge, is true, correct and a complete return.

Name: _____

Signature: _____

Phone No: _____

Email: _____

Date: 06/25/2018

1350



4191025



STATE OF SOUTH CAROLINA
DEPARTMENT OF REVENUE

SUPPLIER SCHEDULE OF TERMINAL RACK REMOVALS

L-2103

4191

Supplier Name RAINY DAY PETROLEUM	License Number 371014713	FEIN 111444555	Month/Year 09/2018
--------------------------------------	-----------------------------	-------------------	-----------------------

SCHEDULE TYPE (5C)

- | | |
|---|--|
| 5-A Gallons Removed Subject to User Fee (Non-eligible Purchaser) | 7-A Gallons Removed for Export to _____ by Supplier (Dest State Tax Collected) |
| 5-C Gallons Removed Subject to User Fee (Eligible Purchaser) | 7-B Gallons Removed for Export to _____ by Supplier (Dest State Tax Exempt) |
| 5-E Gallons Removed User Fee Paid for Import by Importer | 8 Gallons Removed for US Government Sales |
| 5-H Gallons Removed User Fee Paid - For Export by Licensed Exporter | 9-C Gallons Removed for SC Department of Education School Buses |
| 6-F Gallons Removed - Dyed Fuel | 10-B Gallons Removed for Aviation Use |
| 6-H Gallons Removed User Fee Free Import by Licensed Importer | 10-G Gallons Removed for Other Exempt Sales |

PRODUCT TYPE (167)

- | | | |
|-------------------------------|------------------------------|---|
| 065 Gasoline | 072 Dyed Kerosene | D00 Dyed Biodiesel (100%) |
| 122 Blend Components | 130 Jet Fuel | B01-B99 Undyed Biodiesel Blend (%_____) |
| 125 Aviation Gasoline | 142 Kerosene | D01-D99 Dyed Biodiesel Blend (%_____) |
| E00 Fuel Grade Ethanol (100%) | 167 Low Sulfur Undyed Diesel | 092 Other/Substitute Fuel (_____) |
| E01-E99 Gasohol (%_____) | 226 High Sulfur Dyed Diesel | |
| | 227 Low Sulfur Dyed Diesel | |
| | B00 Undyed Biodiesel (100%) | |

1 Carrier Name	2 Carrier FEIN	3 Mode	4 Point Of Destination	5 Terminal Code	6 Purchaser Sold To	7 Purchaser FEIN	8 Date Shipped	9 Document Number	10 Net Gallons	11 Gross Gallons	12 Billed Gallons
SLEEPY OIL	111222555	J	SC	T57SC2060	BOB GAS COMF	123456789	9/2/2018	6230334	1,004	1,004	1,004
BOB GAS CO	123456789	J	SC	T57SC2052	BOB GAS COMF	123456789	9/21/2018	174672	3,096	3,096	3,096
BOB GAS CO	123456789	J	SC	T57SC2052	BOB GAS COMF	123456789	9/21/2018	174672	3,392	3,392	3,392
BOB GAS CO	123456789	J	SC	T57SC2052	BOB GAS COMF	123456789	9/22/2018	174742	3,179	3,179	3,179
BOB GAS CO	123456789	J	SC	T57SC2052	BOB GAS COMF	123456789	9/22/2018	174742	3,180	3,180	3,180
BOB GAS CO	123456789	J	SC	T57SC2052	BOB GAS COMF	123456789	9/22/2018	174787	3,178	3,178	3,178
BOB GAS CO	123456789	J	SC	T57SC2052	BOB GAS COMF	123456789	9/22/2018	174787	3,178	3,178	3,178

4191025

1350



STATE OF SOUTH CAROLINA
DEPARTMENT OF REVENUE

SUPPLIER SCHEDULE OF TERMINAL RACK REMOVALS

L-2103

4191

Supplier Name RAINY DAY PETROLEUM	License Number 371014713	FEIN 111444555	Month/Year 09/2018
---	------------------------------------	--------------------------	------------------------------

SCHEDULE TYPE (6F)

- | | |
|---|--|
| 5-A Gallons Removed Subject to User Fee (Non-eligible Purchaser) | 7-A Gallons Removed for Export to _____ by Supplier (Dest State Tax Collected) |
| 5-C Gallons Removed Subject to User Fee (Eligible Purchaser) | 7-B Gallons Removed for Export to _____ by Supplier (Dest State Tax Exempt) |
| 5-E Gallons Removed User Fee Paid for Import by Importer | 8 Gallons Removed for US Government Sales |
| 5-H Gallons Removed User Fee Paid - For Export by Licensed Exporter | 9-C Gallons Removed for SC Department of Education School Buses |
| 6-F Gallons Removed - Dyed Fuel | 10-B Gallons Removed for Aviation Use |
| 6-H Gallons Removed User Fee Free Import by Licensed Importer | 10-G Gallons Removed for Other Exempt Sales |

PRODUCT TYPE (227)

- | | | |
|-------------------------------|------------------------------|---|
| 065 Gasoline | 072 Dyed Kerosene | D00 Dyed Biodiesel (100%) |
| 122 Blend Components | 130 Jet Fuel | B01-B99 Undyed Biodiesel Blend (%_____) |
| 125 Aviation Gasoline | 142 Kerosene | D01-D99 Dyed Biodiesel Blend (%_____) |
| E00 Fuel Grade Ethanol (100%) | 167 Low Sulfur Undyed Diesel | 092 Other/Substitute Fuel (_____) |
| E01-E99 Gasohol (%_____) | 226 High Sulfur Dyed Diesel | |
| | 227 Low Sulfur Dyed Diesel | |
| | B00 Undyed Biodiesel (100%) | |

1 Carrier Name	2 Carrier FEIN	3 Mode	4 Point Of Destination	5 Terminal Code	6 Purchaser Sold To	7 Purchaser FEIN	8 Date Shipped	9 Document Number	10 Net Gallons	11 Gross Gallons	12 Billed Gallons
SLEEPY OIL	111222555	J	SC	T57SC2060	FREEDOM OIL	777333888	9/3/2018	6230651	501	501	501
SLEEPY OIL	111222555	J	SC	T57SC2060	FREEDOM OIL	777333888	9/3/2018	6230747	7,094	7,094	7,094
SLEEPY OIL	111222555	J	SC	T57SC2060	FREEDOM OIL	777333888	9/3/2018	6230810	1,001	1,001	1,001
SLEEPY OIL	111222555	J	SC	T57SC2060	FREEDOM OIL	777333888	9/5/2018	6231702	7,497	7,497	7,497

1350



4191025



STATE OF SOUTH CAROLINA
DEPARTMENT OF REVENUE

**SUPPLIER SCHEDULE
OF TERMINAL RACK REMOVALS**

L-2103

4191

Supplier Name RAINY DAY PETROLEUM	License Number 371014713	FEIN 111444555	Month/Year 09/2018
--------------------------------------	-----------------------------	-------------------	-----------------------

SCHEDULE TYPE (7A)

- | | |
|---|--|
| 5-A Gallons Removed Subject to User Fee (Non-eligible Purchaser) | 7-A Gallons Removed for Export to <u>GA</u> by Supplier (Dest State Tax Collected) |
| 5-C Gallons Removed Subject to User Fee (Eligible Purchaser) | 7-B Gallons Removed for Export to _____ by Supplier (Dest State Tax Exempt) |
| 5-E Gallons Removed User Fee Paid for Import by Importer | 8 Gallons Removed for US Government Sales |
| 5-H Gallons Removed User Fee Paid - For Export by Licensed Exporter | 9-C Gallons Removed for SC Department of Education School Buses |
| 6-F Gallons Removed - Dyed Fuel | 10-B Gallons Removed for Aviation Use |
| 6-H Gallons Removed User Fee Free Import by Licensed Importer | 10-G Gallons Removed for Other Exempt Sales |

PRODUCT TYPE (167)

- | | | |
|-------------------------------|------------------------------|---|
| 065 Gasoline | 072 Dyed Kerosene | D00 Dyed Biodiesel (100%) |
| 122 Blend Components | 130 Jet Fuel | B01-B99 Undyed Biodiesel Blend (%_____) |
| 125 Aviation Gasoline | 142 Kerosene | D01-D99 Dyed Biodiesel Blend (%_____) |
| E00 Fuel Grade Ethanol (100%) | 167 Low Sulfur Undyed Diesel | 092 Other/Substitute Fuel (_____) |
| E01-E99 Gasohol (%_____) | 226 High Sulfur Dyed Diesel | |
| | 227 Low Sulfur Dyed Diesel | |
| | B00 Undyed Biodiesel (100%) | |

1 Carrier Name	2 Carrier FEIN	3 Mode	4 Point Of Destination	5 Terminal Code	6 Purchaser Sold To	7 Purchaser FEIN	8 Date Shipped	9 Document Number	10 Net Gallons	11 Gross Gallons	12 Billed Gallons
SLEEPY OIL	111222555	J	GA	T57SC2060	FREEDOM OIL	777333888	9/3/2018	6230844	1,997	1,997	1,997
SLEEPY OIL	111222555	J	GA	T57SC2060	FREEDOM OIL	777333888	9/3/2018	6230881	3,792	3,792	3,792
SLEEPY OIL	111222555	J	GA	T57SC2060	FREEDOM OIL	777333888	9/3/2018	6231009	995	995	995
SLEEPY OIL	111222555	J	GA	T57SC2060	FREEDOM OIL	777333888	9/4/2018	6231290	6,006	6,006	6,006
SLEEPY OIL	111222555	J	GA	T57SC2060	FREEDOM OIL	777333888	9/4/2018	6231429	995	995	995
SLEEPY OIL	111222555	J	GA	T57SC2060	FREEDOM OIL	777333888	9/9/2018	6233635	1,497	1,497	1,497

4191025

1350



STATE OF SOUTH CAROLINA
DEPARTMENT OF REVENUE

SUPPLIER SCHEDULE OF TERMINAL RACK REMOVALS

L-2103

4191

Supplier Name RAINY DAY PETROLEUM	License Number 371014713	FEIN 111444555	Month/Year 09/2018
---	------------------------------------	--------------------------	------------------------------

SCHEDULE TYPE (7B)

- | | |
|---|---|
| 5-A Gallons Removed Subject to User Fee (Non-eligible Purchaser) | 7-A Gallons Removed for Export to _____ by Supplier (Dest State Tax Collected) |
| 5-C Gallons Removed Subject to User Fee (Eligible Purchaser) | 7-B Gallons Removed for Export to <u>GA</u> by Supplier (Dest State Tax Exempt) |
| 5-E Gallons Removed User Fee Paid for Import by Importer | 8 Gallons Removed for US Government Sales |
| 5-H Gallons Removed User Fee Paid - For Export by Licensed Exporter | 9-C Gallons Removed for SC Department of Education School Buses |
| 6-F Gallons Removed - Dyed Fuel | 10-B Gallons Removed for Aviation Use |
| 6-H Gallons Removed User Fee Free Import by Licensed Importer | 10-G Gallons Removed for Other Exempt Sales |

PRODUCT TYPE (227)

- | | | |
|-------------------------------|------------------------------|---|
| 065 Gasoline | 072 Dyed Kerosene | D00 Dyed Biodiesel (100%) |
| 122 Blend Components | 130 Jet Fuel | B01-B99 Undyed Biodiesel Blend (%_____) |
| 125 Aviation Gasoline | 142 Kerosene | D01-D99 Dyed Biodiesel Blend (%_____) |
| E00 Fuel Grade Ethanol (100%) | 167 Low Sulfur Undyed Diesel | 092 Other/Substitute Fuel (_____) |
| E01-E99 Gasohol (%_____) | 226 High Sulfur Dyed Diesel | |
| | 227 Low Sulfur Dyed Diesel | |
| | B00 Undyed Biodiesel (100%) | |

1 Carrier Name	2 Carrier FEIN	3 Mode	4 Point Of Destination	5 Terminal Code	6 Purchaser Sold To	7 Purchaser FEIN	8 Date Shipped	9 Document Number	10 Net Gallons	11 Gross Gallons	12 Billed Gallons
SLEEPY OIL	111222555	J	GA	T57SC2060	FREEDOM OIL	777333888	9/4/2018	6231290	1,502	1,502	1,502
SLEEPY OIL	111222555	J	GA	T57SC2060	FREEDOM OIL	777333888	9/9/2018	6233635	5,988	5,988	5,988

Supplier Amendment

ISA~00~ ~00~ ~ZZ~111444555 ~ZZ~SCDOR
 ~150623~1431~|~00403~000003003~0~T~^\
 GS~TF~111444555~SCDOR~20150623~143118~3003~X~004030\
 ST~813~3003~2\
 BTI~T6~050~47~SCDOR~20150623~RAIN~24~111444555~49~371014713~SV~SCMFUEL0602~~CO\
 DTM~194~20180930\
 TIA~5001~---3096~GA\
 N1~TP~RAINY DAY PETROLEUM\
 N3~11 CLOUD STREET\
 N4~COLUMBIA~SC~29214~US\
 PER~CN~TRACI BULLOCK~TE~8038961748~FX~8038961779~EM~TBULLOCK@RAINYDAYPETROLEUM.COM\
 PER~EA~TRACI BULLOCK~TE~8038961748~FX~8038961779~EM~TBULLOCK@RAINYDAYPETROLEUM.COM\
 N1~31~RAINY DAY PETROLEUM\
 N3~11 CLOUD STREET\
 N4~COLUMBIA~SC~29214~US\
 TFS~T2~SDR\
 REF~55~1\
 TIA~5003~-641.81~-3096~GA\
 TFS~T3~S02A~PG~065~94~CE\
 REF~55~2\
 FGS~S\
 REF~55~3\
 TIA~5005~0.00\
 TIA~5008~0.00\
 TIA~5009~0.00\
 TFS~T3~S03C~PG~065~94~CE\
 REF~55~4\
 FGS~S\
 REF~55~5\
 TIA~5005~0.00\
 TFS~T3~S03A01~PG~065~94~CE\
 REF~55~6\
 FGS~S\
 REF~55~7\
 TIA~5005~0.00\
 TFS~T3~S03A~PG~065~94~CE\
 REF~55~8\
 FGS~S\
 REF~55~9\
 TIA~5005~0.00\
 TFS~T3~S02A~PG~167~94~CE\
 REF~55~10\
 FGS~S\
 REF~55~11\
 TIA~5005~-619.20\
 TIA~5008~0.00\
 TIA~5009~0.00\
 TFS~T3~S03C~PG~167~94~CE\
 REF~55~12\
 FGS~S\
 REF~55~13\
 TIA~5005~0.00\
 TFS~T3~S03A~PG~167~94~CE\
 REF~55~14\

FGS~S\
 REF~55~15\
 TIA~5005~0.00\
 TFS~T3~S03A01~PG~167~94~CE\
 REF~55~16\
 FGS~S\
 REF~55~17\
 TIA~5005~-0.61\
 TFS~T3~S02C\
 REF~55~18\
 FGS~S\
 REF~55~19\
 TIA~5005~-7.74\
 TIA~5008~0.00\
 TIA~5009~0.00\
 TFS~T3~S03B02\
 REF~55~20\
 FGS~S\
 REF~55~21\
 TIA~5005~0.00\
 TFS~T3~S02D\
 REF~55~22\
 FGS~S\
 REF~55~23\
 TIA~5005~-15.48\
 TIA~5008~0.00\
 TIA~5009~0.00\
 TFS~T3~S03B\
 REF~55~24\
 FGS~S\
 REF~55~25\
 TIA~5005~0.00\
 TFS~T3~5C~PG~167~94~J \
 REF~55~26\
 N1~OT~~TC~T57SC2052\
 N1~CA~BOB GAS COMPANY~24~123456789\
 N1~BY~BOB GAS COMPANY~24~123456789\
 N1~ST~SC\
 FGS~D~BM~174672\
 REF~55~27\
 DTM~095~20180921\
 TIA~5005~~~~-3096~GA\
 TIA~5006~~~~-3096~GA\
 TIA~5007~~~~-3096~GA\
 SE~96~3003\
 GE~1~3003\
 IEA~1~000003003\

1350



dor.sc.gov



STATE OF SOUTH CAROLINA
DEPARTMENT OF REVENUE
**MOTOR FUEL SUPPLIERS MONTHLY USER FEE
AND FEE CALCULATION**

L-2119

4207

<input checked="" type="checkbox"/> Amended Return SUPPLIER NAME AND ADDRESS RAINY DAY PETROLEUM 11 CLOUD STREET COLUMBIA, SC 29214	License Number
	371014713
	FEIN
	111444555
USER FEE AND OTHER APPLICABLE FEE CALCULATIONS	
	Period Covered
	09/2018

1.	Gasoline User Fee Collected (See Instructions)	0.00
2.	Less Tare Allowance	0.00
3.	Less Administration Allowance	0.00
4.	Less Credit ▶	0.00
5.	Net Gasoline User Fee Due ▶	0.00
6.	Penalty ▶	0.00
7.	Interest ▶	0.00
8.	Total Gasoline User Fee Due	0.00
9.	Special Fuels User Fee Collected (See Instructions)	-619.20
10.	Less Tare Allowance	0.00
11.	Less Administration Allowance	-0.62
12.	Less Credit ▶	0.00
13.	Net Special Fuels User Fee Due ▶	-618.58
14.	Penalty ▶	0.00
15.	Interest ▶	0.00
16.	Total Special Fuels User Fee Due	-618.58
17.	Inspection Fees Collected (See Instructions) ▶	-7.74
18.	Less Credit ▶	0.00
19.	Penalty ▶	0.00
20.	Interest ▶	0.00
21.	Total Inspection Fees Due	-7.74
22.	Environmental Impact Fees Collected (See Instructions) ▶	-15.48
23.	Less Credit ▶	0.00
24.	Penalty ▶	0.00
25.	Interest ▶	0.00
26.	Total Environmental Impact Fees Due	-15.48
27.	Total Fees Due, Plus Penalty and Interest ▶	
	Add lines 8, 16, 21 and 26.	-641.80

42071027

L-90



CALCULATION PAGE - SUPPLIER

L-2119

42072025

ADJUSTMENT			Gasoline/ Gasohol	Undyed Diesel/ Biodiesel	Dyed Fuel	Undyed/Dyed Kerosene	Aviation Gasoline	Jet Fuel	Other/Substitute Fuel
▶ 1.	STATE DIVERSION CORRECTIONS	SCHD 11	0	0	0	0	0	0	0
▶ 2.	GALLONS RECEIVED USER FEE PAID	SCHD 1	0	0	0	0	0	0	0
▶ 3.	GALLONS REMOVED USER FEE FREE IMPORT BY LICENSED IMPORTER	6-H	0	0	0	0	0	0	0
EXPORTS									
▶ 4.	GALLONS REMOVED FOR EXPORT (DEST STATE TAX COLLECTED)	7-A	0	0	0	0	0	0	0
▶ 5.	GALLONS REMOVED FOR EXPORT (DEST STATE TAX EXEMPT)	7-B	0	0	0	0	0	0	0
▶ 6.	TOTAL GALLONS REMOVED FOR EXPORT (LINE 4 + LINE 5)	CALC	0	0	0	0	0	0	0
EXEMPT SALES									
▶ 7.	GALLONS REMOVED FOR US GOVERNMENT SALES	8	0	0	0	0	0	0	0
▶ 8.	GALLONS REMOVED FOR SC DEPT OF EDUC SCHOOL BUSES	9-C	0	0					0
▶ 9.	GALLONS REMOVED FOR AVIATION USE	10-B					0	0	0
▶ 10.	GALONS REMOVED FOR OTHER EXEMPT SALES	10-G	0	0	0	0	0	0	0
▶ 11.	TOTAL GALLONS REMOVED FOR EXEMPT SALES (TOTAL OF LINES 7 THROUGH 10)	CALC	0	0	0	0	0	0	0
▶ 12.	GALLONS REMOVED DYED FUELS	6-F			0	0			
▶ 13.	TOTAL GALLONS REMOVED EXEMPT FROM STATE USER FEE (LINE 11 + LINE 12)	CALC	0	0	0	0	0	0	0
SALES SUBJECT TO USER FEE			Gasoline/ Gasohol	Undyed Diesel/ Biodiesel	Dyed Fuel	Undyed/Dyed Kerosene	Aviation Gasoline	Jet Fuel	Other/Substitute Fuel
▶ 14.	GALLONS REMOVED SUBJECT TO USER FEE - (NON-ELIGIBLE PURCHASER)	5-A	0	0					0
▶ 15.	GALLONS REMOVED SUBJECT TO USER FEE - (ELIGIBLE PURCHASER)	5-C	0	-3,096					0
▶ 16.	GALLONS REMOVED USER FEE PAID FOR IMPORT BY IMPORTER	5-E	0	0					0
▶ 17.	GALLONS REMOVED USER FEE PAID FOR EXPORT BY EXPORTER	5-H	0	0					0
▶ 18.	TOTAL GALLONS REMOVED SC USER FEE PAID (LINE 4 + LINE 15 + LINE 16 + LINE 17)	CALC	0	-3,096					0
▶ 19.	TOTAL GALLONS REMOVED SUBJECT TO USER FEE (LINE 18 + LINE 1 - LINE 2 - LINE 3)	CALC	0	-3,096					0
▶ 20.	TOTAL GALLONS REMOVED SUBJECT TO OTHER FEES (LINE 13 + LINE 18 + LINE 1 - LINE 2 - LINE 3 - LINE 7)	CALC	0	-3,096	0	0	0	0	0

Penalties - Failure to file a return will result in a penalty of five percent (5%) for the first month plus five percent (5%) for each additional month not to exceed a total of twenty-five percent (25%). Failure to pay will result in penalties of one half of one percent (.5%) per month not to exceed twenty-five percent (25%). Other penalties may apply.

Interest - Interest on all overdue accounts will be assessed at the rate provided under Section 6621 and 6622 of the Internal Revenue Code. Rates will change quarterly depending on the prime rate. In addition, interest will be compounded daily.

I hereby certify that the information contained in this return (including all attachments) has been examined by me and to the best of my knowledge, is true, correct and a complete return.

Name: _____

Signature: _____

Phone No: _____

Email: _____

Date: 06/26/2018

4191025

1350



STATE OF SOUTH CAROLINA
DEPARTMENT OF REVENUE

SUPPLIER SCHEDULE OF TERMINAL RACK REMOVALS

L-2103

4191

Supplier Name RAINY DAY PETROLEUM	License Number 371014713	FEIN 111444555	Month/Year 09/2018
---	------------------------------------	--------------------------	------------------------------

SCHEDULE TYPE (5C)

- | | |
|---|--|
| 5-A Gallons Removed Subject to User Fee (Non-eligible Purchaser) | 7-A Gallons Removed for Export to _____ by Supplier (Dest State Tax Collected) |
| 5-C Gallons Removed Subject to User Fee (Eligible Purchaser) | 7-B Gallons Removed for Export to _____ by Supplier (Dest State Tax Exempt) |
| 5-E Gallons Removed User Fee Paid for Import by Importer | 8 Gallons Removed for US Government Sales |
| 5-H Gallons Removed User Fee Paid - For Export by Licensed Exporter | 9-C Gallons Removed for SC Department of Education School Buses |
| 6-F Gallons Removed - Dyed Fuel | 10-B Gallons Removed for Aviation Use |
| 6-H Gallons Removed User Fee Free Import by Licensed Importer | 10-G Gallons Removed for Other Exempt Sales |

PRODUCT TYPE (167)

- | | | |
|-------------------------------|------------------------------|---|
| 065 Gasoline | 072 Dyed Kerosene | D00 Dyed Biodiesel (100%) |
| 122 Blend Components | 130 Jet Fuel | B01-B99 Undyed Biodiesel Blend (%_____) |
| 125 Aviation Gasoline | 142 Kerosene | D01-D99 Dyed Biodiesel Blend (%_____) |
| E00 Fuel Grade Ethanol (100%) | 167 Low Sulfur Undyed Diesel | 092 Other/Substitute Fuel (_____) |
| E01-E99 Gasohol (%_____) | 226 High Sulfur Dyed Diesel | |
| | 227 Low Sulfur Dyed Diesel | |
| | B00 Undyed Biodiesel (100%) | |

1 Carrier Name	2 Carrier FEIN	3 Mode	4 Point Of Destination	5 Terminal Code	6 Purchaser Sold To	7 Purchaser FEIN	8 Date Shipped	9 Document Number	10 Net Gallons	11 Gross Gallons	12 Billed Gallons
BOB GAS CO	123456789	J	SC	T57SC2052	BOB GAS COMF	123456789	9/21/2018	174672	-3,096	-3,096	-3,096



dor.sc.gov



STATE OF SOUTH CAROLINA
DEPARTMENT OF REVENUE
**MOTOR FUEL SUPPLIERS MONTHLY USER FEE
AND FEE CALCULATION**

L-2119

4207

<input type="checkbox"/> Amended Return SUPPLIER NAME AND ADDRESS RAINY DAY PETROLEUM 11 CLOUD STREET COLUMBIA, SC 29214	License Number 371014713 FEIN 111444555 Period Covered 08/2018
USER FEE AND OTHER APPLICABLE FEE CALCULATIONS	

1. Gasoline User Fee Collected (See Instructions)	0.00
2. Less Tare Allowance	0.00
3. Less Administration Allowance	0.00
4. Less Credit	0.00
5. Net Gasoline User Fee Due	0.00
6. Penalty	0.00
7. Interest	0.00
8. Total Gasoline User Fee Due	0.00
9. Special Fuels User Fee Collected (See Instructions)	0.00
10. Less Tare Allowance	0.00
11. Less Administration Allowance	0.00
12. Less Credit	0.00
13. Net Special Fuels User Fee Due	0.00
14. Penalty	0.00
15. Interest	0.00
16. Total Special Fuels User Fee Due	0.00
17. Inspection Fees Collected (See Instructions)	0.00
18. Less Credit	0.00
19. Penalty	0.00
20. Interest	0.00
21. Total Inspection Fees Due	0.00
22. Environmental Impact Fees Collected (See Instructions)	0.00
23. Less Credit	0.00
24. Penalty	0.00
25. Interest	0.00
26. Total Environmental Impact Fees Due	0.00
27. Total Fees Due, Plus Penalty and Interest	0.00
Add lines 8, 16, 21 and 26.	0.00



CALCULATION PAGE - SUPPLIER

L-2119

42072025

ADJUSTMENT			Gasoline/ Gasohol	Undyed Diesel/ Biodiesel	Dyed Fuel	Undyed/Dyed Kerosene	Aviation Gasoline	Jet Fuel	Other/Substitute Fuel
▶ 1.	STATE DIVERSION CORRECTIONS	SCHD 11	0	0	0	0	0	0	0
▶ 2.	GALLONS RECEIVED USER FEE PAID	SCHD 1	0	0	0	0	0	0	0
▶ 3.	GALLONS REMOVED USER FEE FREE IMPORT BY LICENSED IMPORTER	6-H	0	0	0	0	0	0	0
EXPORTS									
▶ 4.	GALLONS REMOVED FOR EXPORT (DEST STATE TAX COLLECTED)	7-A	0	0	0	0	0	0	0
▶ 5.	GALLONS REMOVED FOR EXPORT (DEST STATE TAX EXEMPT)	7-B	0	0	0	0	0	0	0
▶ 6.	TOTAL GALLONS REMOVED FOR EXPORT (LINE 4 + LINE 5)	CALC	0	0	0	0	0	0	0
EXEMPT SALES									
▶ 7.	GALLONS REMOVED FOR US GOVERNMENT SALES	8	0	0	0	0	0	0	0
▶ 8.	GALLONS REMOVED FOR SC DEPT OF EDUC SCHOOL BUSES	9-C	0	0					0
▶ 9.	GALLONS REMOVED FOR AVIATION USE	10-B					0	0	0
▶ 10.	GALONS REMOVED FOR OTHER EXEMPT SALES	10-G	0	0	0	0	0	0	0
▶ 11.	TOTAL GALLONS REMOVED FOR EXEMPT SALES (TOTAL OF LINES 7 THROUGH 10)	CALC	0	0	0	0	0	0	0
▶ 12.	GALLONS REMOVED DYED FUELS	6-F			0	0			
▶ 13.	TOTAL GALLONS REMOVED EXEMPT FROM STATE USER FEE (LINE 11 + LINE 12)	CALC	0	0	0	0	0	0	0
SALES SUBJECT TO USER FEE			Gasoline/ Gasohol	Undyed Diesel/ Biodiesel	Dyed Fuel	Undyed/Dyed Kerosene	Aviation Gasoline	Jet Fuel	Other/Substitute Fuel
▶ 14.	GALLONS REMOVED SUBJECT TO USER FEE - (NON-ELIGIBLE PURCHASER)	5-A	0	0					0
▶ 15.	GALLONS REMOVED SUBJECT TO USER FEE - (ELIGIBLE PURCHASER)	5-C	0	0					0
▶ 16.	GALLONS REMOVED USER FEE PAID FOR IMPORT BY IMPORTER	5-E	0	0					0
▶ 17.	GALLONS REMOVED USER FEE PAID FOR EXPORT BY EXPORTER	5-H	0	0					0
▶ 18.	TOTAL GALLONS REMOVED SC USER FEE PAID (LINE 4 + LINE 15 + LINE 16 + LINE 17)	CALC	0	0					0
▶ 19.	TOTAL GALLONS REMOVED SUBJECT TO USER FEE (LINE 18 + LINE 1 - LINE 2 - LINE 3)	CALC	0	0					0
▶ 20.	TOTAL GALLONS REMOVED SUBJECT TO OTHER FEES (LINE 13 + LINE 18 + LINE 1 - LINE 2 - LINE 3 - LINE 7)	CALC	0	0	0	0	0	0	0

Penalties - Failure to file a return will result in a penalty of five percent (5%) for the first month plus five percent (5%) for each additional month not to exceed a total of twenty-five percent (25%). Failure to pay will result in penalties of one half of one percent (.5%) per month not to exceed twenty-five percent (25%). Other penalties may apply.

Interest - Interest on all overdue accounts will be assessed at the rate provided under Section 6621 and 6622 of the Internal Revenue Code. Rates will change quarterly depending on the prime rate. In addition, interest will be compounded daily.

I hereby certify that the information contained in this return (including all attachments) has been examined by me and to the best of my knowledge, is true, correct and a complete return.

Name: _____

Signature: _____

Phone No: _____

Email: _____

Date: 06/26/2018

Terminal Operator Report (TOR)

Create one ST-SE loop for each Terminal.

Note: Matching Sample Return and Schedules follow.

```

ISA~00~                ~00~                ~ZZ~777333888        ~ZZ~SCDOR
~160720~1436~|~00403~300000050~0~T~^\  

GS~TF~777333888~SCDOR~20160720~143634~300000050~X~004030\  

ST~813~300000050~2\  

BTI~T6~050~47~SCDOR~20160720~FREE~24~777333888~49~371010352~SV~SCMFUEL0301~00\  

DTM~194~20181030\  

TIA~5001~~~~277735~GA\  

N1~TP~Freedom Oil Company Inc\  

N3~777 Victory Lane\  

N4~Charleston~SC~29401~US\  

PER~CN~Traci Bullock~TE~8038961748~FX~8038961779~EM~TBullock@scdor.us\  

PER~EA~Traci Bullock~TE~8038961748~FX~8038961779~EM~TBullock@scdor.us\  

N1~31~Freedom Oil Company Inc\  

N3~777 Victory Lane\  

N4~Charleston~SC~29401~US\  

TFS~T2~TOR~~~TC~T57SC2075\  

REF~55~1\  

DTM~184~20181030\  

FGS~EI~PG~065\  

REF~55~2\  

TIA~5002~~~~2347542~GA\  

FGS~EI~PG~167\  

REF~55~3\  

TIA~5002~~~~1005500~GA\  

TFS~T3~15A~PG~065~94~PL\  

REF~55~4\  

N1~CA~Sleepy Oil~24~111222555\  

N1~ON~Bob Gas~24~123456789\  

N1~DT~~~TC~T57SC2075\  

FGS~D~BM~16081781\  

REF~55~5\  

DTM~095~20181005\  

TIA~5005~~~~420000~GA\  

TFS~T3~15A~PG~065~94~PL\  

REF~55~6\  

N1~OT~~~TC~T57SC2075\  

N1~CA~Sleepy Oil~24~111222555\  

N1~ON~Bob Gas~24~123456789\  

N1~DT~~~TC~T57SC2075\  

FGS~D~BM~16082154\  

REF~55~7\  

DTM~095~20181021\  

TIA~5005~~~~1600000~GA\  

TFS~T3~15A~PG~167~94~PL\  

REF~55~8\  

N1~OT~~~TC~T57SC2075\  

N1~CA~Sleepy Oil~24~111222555\  

N1~ON~Bob Gas~24~123456789

```


N1~DT~~TC~T57SC2075\
 FGS~D~BM~16082154\
 REF~55~9\
 DTM~095~20181021\
 TIA~5005~~~305000~GA\
 TFS~T3~15A~PG~167~94~PL\
 REF~55~10\
 N1~OT~~TC~T57SC2075\
 N1~CA~Sleepy Oil~24~111222555\
 N1~ON~Bob Gas~24~123456789\
 N1~DT~~TC~T57SC2075\
 FGS~D~BM~16082154\
 REF~55~11\
 DTM~095~20181021\
 TIA~5005~~~502000~GA\
 TFS~T3~15B~PG~065~94~J \
 REF~55~12\
 N1~OT~~TC~T57SC2075\
 N1~CA~RAINY DAY PETROLEUM~24~111444555
 N1~SE~Bob Gas~24~123456789\ SELLER AND POSITION HOLDER ARE THE SAME
 N1~ON~Bob Gas~24~123456789\
 N1~ST~SC\
 FGS~D~BM~16081992\
 REF~55~13\
 DTM~095~20181016\
 TIA~5005~~~8501~GA\
 TIA~5006~~~8500~GA\
 FGS~D~BM~16081984\
 REF~55~14\
 DTM~095~20181016\
 TIA~5005~~~8620~GA\
 TIA~5006~~~8600~GA\
 TFS~T3~15B~PG~065~94~J \
 REF~55~15\
 N1~OT~~TC~T57SC2075\
 N1~CA~RAINY DAY PETROLEUM~24~111444555\
 N1~SE~Bob Gas~24~123456789\
 N1~ON~Bob Gas~24~123456789\ SELLER AND POSITION HOLDER ARE THE SAME
 N1~ST~NC\
 FGS~D~BM~16081992\
 REF~55~16\
 DTM~095~20181016\
 TIA~5005~~~8575~GA\
 TIA~5006~~~8600~GA\
 FGS~D~BM~16081992\
 REF~55~17\
 DTM~095~20181016\
 TIA~5005~~~9108~GA\
 TIA~5006~~~9100~GA\
 TFS~T3~15B~PG~065~94~J \
 REF~55~18\
 N1~OT~~TC~T57SC2075\
 N1~CA~RAINY DAY PETROLEUM~24~111444555\
 N1~SE~Bob Gas~24~123456789\

N1~ON~Bob Gas~24~123456789\ SELLER AND POSITION HOLDER ARE THE SAME
N1~ST~NC\
FGS~D~BM~16081992\
REF~55~19\
DTM~095~20181016\
TIA~5005~~~8610~GA\
TIA~5006~~~8600~GA\
FGS~D~BM~16081992\
REF~55~20\
DTM~095~20181016\
TIA~5005~~~8705~GA\
TIA~5006~~~8700~GA\
SE~112~300000050\
GE~000001~300000050\
IEA~00001~300000050\

1350



Original
1817700005

dor.sc.gov



STATE OF SOUTH CAROLINA
DEPARTMENT OF REVENUE
**MOTOR FUEL TERMINAL OPERATOR
MONTHLY RETURN**

L-2098

4186

Amended Return

<p>OPERATOR NAME AND ADDRESS</p> <p>Freedom Oil Company Inc 777 Victory Lane Columbia, SC 29214</p>	<p>License Number</p> <p>371010352</p>
<p>NAME AND PHYSICAL ADDRESS OF TERMINAL</p> <p>Motiva Enterprises LLC 300 Delmar Road, Spartansburg, SC 29302</p>	<p>FEIN</p> <p>777333888</p>
	<p>Terminal Code</p> <p>T57SC2075</p>
	<p>Month/Year</p> <p>10/2018</p>
	<p>The Return is Due on the 22nd of the Next Month.</p>

**COMPLETE MONTHLY SUMMARY OF TRANSACTIONS FOR THE MONTH
(LOCATED ON THE BACK OF THIS REPORT)**

S.C. Code of Laws 1976 As Amended: Code Section 12-54-210 (a) states: A person liable for a tax, license, fee, or surcharge administered by the department or for the filing of a return with the department, including information returns shall keep books, papers, memoranda, records, render statements, make returns, and comply with regulations as the department prescribes. Persons failing to comply with the provisions of this section must be penalized in an amount to be assessed by the department not to exceed five hundred dollars for the period covered by the return in addition to other penalties provided by law.

I hereby certify that the information contained in this return (including accompanying schedules and statements) has been examined by me and to the best of my knowledge is true, correct and a complete return.

Name: _____
(Print)

Signature: _____

Phone Number: _____

Date: 06/26/2018

Email Address: _____



41862020

L-2098

MONTHLY SUMMARY OF TRANSACTIONS FOR THE MONTH

	Description	SCHD	Gasoline/ Gasohol	Undyed Diesel/Biodiesel	Dyed Fuel	Undyed/Dyed Kerosene	Aviation Gasoline	Jet Fuel	Other/ Substitute Fuel
▶ 1	Beginning Inventory		1,402,000	1,207,000	0	0	0	0	0
▶ 2	Total Receipts	15-A	2,020,000	807,000	0	0	0	0	0
3	Total Gallons Available for Removal	CALC	3,422,000	2,014,000	0	0	0	0	0
▶ 4	Fuel Disbursements	15-B	52,119	0	0	0	0	0	0
5	Gallons Available (Less Disbursements)	CALC	3,369,881	2,014,000	0	0	0	0	0
6	Gain/Loss (Inventory Adjustment)	CALC	-1,022,339	-1,008,500	0	0	0	0	0
▶ 7	Actual Ending Inventory		2,347,542	1,005,500	0	0	0	0	0

Terminals located in states other than SC are not required to provide inventory information. Only SC Disbursement information for Line 4 is required.

If you have any questions or need assistance completing this return, email MotorFuelTax@dor.sc.gov or call this office at (803) 896-1990.

02018814



STATE OF SOUTH CAROLINA
DEPARTMENT OF REVENUE

L-2100

4188

**SCHEDULE 15-B
TERMINAL OPERATOR SCHEDULE OF DISBURSEMENT**

Terminal Name Freedom Oil Company Inc	FEIN 777333888	Terminal Code T57SC2075	Month/Year 10/2018
--	-------------------	----------------------------	-----------------------

PRODUCT TYPE (065)

065 Gasoline	130 Jet Fuel	167 Low Sulfur Undyed Diesel Fuel	B01-B99 Undyed Biodiesel
122 Blend Components	B00 (100%) Undyed Biodiesel	226 High Sulfur Dyed Diesel Fuel	Blend (% _____)
E00 Fuel Grade Ethanol (100%)	D00 (100%) Dyed Biodiesel	227 Low Sulfur Dyed Diesel Fuel	D01-D99 Dyed Biodiesel
E01-E99 Gasohol (% _____)	142 Kerosene		Blend (% _____)
125 Aviation Gasoline	072 Dyed Kerosene		092 Other/Substitute Fuel (_____)

1 Carrier Name	2 Carrier FEIN	3 Mode	4 Dest State	5 Supplier	6 Supplier FEIN	7 Date Shipped	8 Document Number	9 Net Gallons	10 Gross Gallons
RAINY DAY PETROLEUM	111444555	J	SC	Bob Gas	123456789	10/16/2018	16081984	8,620	8,600
RAINY DAY PETROLEUM	111444555	J	NC	Bob Gas	123456789	10/16/2018	16081992	8,575	8,600
RAINY DAY PETROLEUM	111444555	J	NC	Bob Gas	123456789	10/16/2018	16081992	8,610	8,600
RAINY DAY PETROLEUM	111444555	J	NC	Bob Gas	123456789	10/16/2018	16081992	8,705	8,700
RAINY DAY PETROLEUM	111444555	J	NC	Bob Gas	123456789	10/16/2018	16081992	9,108	9,100
RAINY DAY PETROLEUM	111444555	J	SC	Bob Gas	123456789	10/16/2018	16081992	8,501	8,500

Transporter Report (CCR)

ISA~00~ ~00~ ~ZZ~111222555 ~ZZ~SCDOR
~160907~1240~|~00403~000003003~0~T~^\
GS~TF~111222555~SCDOR~20160907~124017~3003~X~004030\
ST~813~3003~2\
BTI~T6~050~47~SCDOR~20160907~SLEE~24~111222555~49~371000746~SV~SCMFUEL0602~00\
DTM~194~20180831\
TIA~5001~56773~GA\
N1~TP~SLEEPY OIL\
N3~123 WAKE UP ROAD\
N4~COLUMBIA~SC~29123~US\
PER~CN~T BULLOCK~TE~8038961748~FX~8038961779~EM~TBULLOCK@SCDOR.US\
PER~EA~T BULLOCK~TE~8038961748~FX~8038961779~EM~TBULLOCK@SCDOR.US\
N1~31~SLEEPY OIL\
N3~123 WAKE UP ROAD\
N4~COLUMBIA~SC~29123~US\
TFS~T2~CCR\
REF~55~1\
TIA~5004~56773~GA\
TFS~T3~14B~PG~065~94~J \
REF~55~2\
N1~SF~NC\
N1~SE~BOB GAS~24~123456789\
N1~CI~RAINY DAY PETROLEUM~24~111444555\
N1~BY~FREEDOM OIL~24~777333888\
N1~ST~SC\
FGS~D~BM~302080\
REF~55~3\
DTM~095~20180817\
TIA~5005~8414~GA\
TIA~5006~8509~GA\
FGS~D~BM~303099\
REF~55~4\
DTM~095~20180830\
TIA~5005~8410~GA\
TIA~5006~8498~GA\
FGS~D~BM~301319\
REF~55~5\
DTM~095~20180805\
TIA~5005~8408~GA\
TIA~5006~8501~GA\
TFS~T3~14B~PG~065~94~J \
REF~55~6\
N1~SF~NC\
N1~SE~BOB GAS~24~123456789\
N1~CI~RAINY DAY PETROLEUM~24~111444555\
N1~BY~BOB GAS~24~123456789\
N1~ST~SC\
FGS~D~BM~301533\

REF~55~7\
 DTM~095~20180809\
 TIA~5005~~~2549~GA\
 TIA~5006~~~2549~GA\
 FGS~D~BM~301533\
 REF~55~8\
 DTM~095~20180809\
 TIA~5005~~~5950~GA\
 TIA~5006~~~5950~GA\
 TFS~T3~14B~PG~065~94~J \
 REF~55~9\
 N1~SF~NC\
 N1~SE~BOB GAS~24~123456789\
 N1~CI~RAINY DAY PETROLEUM~24~111444555\
 N1~BY~BOB GAS~24~123456789\
 N1~ST~SC\
 FGS~D~BM~301687\
 REF~55~10\
 DTM~095~20180811\
 TIA~5005~~~2960~GA\
 TIA~5006~~~3001~GA\
 FGS~D~BM~302802\
 REF~55~11\
 DTM~095~20180826\
 TIA~5005~~~3749~GA\
 TIA~5006~~~3801~GA\
 TFS~T3~14B~PG~167~94~J \
 REF~55~12\
 N1~SF~NC\
 N1~SE~BOB GAS~24~123456789\
 N1~CI~RAINY DAY PETROLEUM~24~111444555\
 N1~BY~BOB GAS~24~123456789\
 N1~ST~SC\
 FGS~D~BM~302141\
 REF~55~13\
 DTM~095~20180818\
 TIA~5005~~~7428~GA\
 TIA~5006~~~7504~GA\
 TFS~T3~14B~PG~227~94~J \
 REF~55~14\
 N1~SF~NC\
 N1~SE~BOB GAS~24~123456789\
 N1~CI~RAINY DAY PETROLEUM~24~111444555\
 N1~BY~BOB GAS~24~123456789\
 N1~ST~SC\
 FGS~D~BM~301687\
 REF~55~15\
 DTM~095~20180811\
 TIA~5005~~~4948~GA\
 TIA~5006~~~4999~GA\
 FGS~D~BM~302802\
 REF~55~16\
 DTM~095~20180826\
 TIA~5005~~~3957~GA\

TIA~5006~~~3998~GA\
 TFS~T3~14A~PG~065~94~J \
 REF~55~17\
 N1~OT~~TC~T57SC2061\
 N1~SE~BOB GAS~24~123456789\
 N1~CI~RAINY DAY PETROLEUM~24~111444555\
 N1~BY~BOB GAS~24~123456789\
 N1~ST~NC\
 FGS~D~BM~3016887\
 REF~55~18\
 DTM~095~20180811\
 TIA~5005~~~4948~GA\
 TIA~5006~~~4999~GA\
 FGS~D~BM~302802\
 REF~55~19\
 DTM~095~20180826\
 TIA~5005~~~3957~GA\
 TIA~5006~~~3998~GA\
 TFS~T3~14C~PG~065~94~J \
 REF~55~20\
 N1~OT~~TC~T57SC2061\
 N1~SE~BOB GAS~24~123456789\
 N1~CI~RAINY DAY PETROLEUM~24~111444555\
 N1~BY~BOB GAS~24~123456789\
 N1~ST~SC\
 FGS~D~BM~458966\
 REF~55~21\
 DTM~095~20180812\
 TIA~5005~~~3960~GA\
 TIA~5006~~~4001~GA\
 FGS~D~BM~302802\
 REF~55~11\
 DTM~095~20180826\
 TIA~5005~~~4749~GA\
 TIA~5006~~~4801~GA\
 SE~135~3003\
 GE~1~3003\
 IEA~1~000003003\

1350



Original
1817800001

dor.sc.gov



STATE OF SOUTH CAROLINA
DEPARTMENT OF REVENUE

MOTOR FUEL TRANSPORTER MONTHLY RETURN

L-2176

4330

Amended Return

NAME AND ADDRESS

Sleepy Oil
123 Wake Up Rd

Columbia, 29123

License Number

371000746

FEIN

111222555

Month/Year

08/2018

Gallon Information

1. Total of all deliveries of fuels from a point inside South Carolina to a point outside South Carolina (Schedule 14A)	1	▶	8,905
2. Total of all deliveries of fuels from a point outside South Carolina to a point inside South Carolina (Schedule 14B)	2	▶	56,773
3. Total of all deliveries of fuels between two points in South Carolina (Schedule 14C)	3	▶	8,709
4. TOTAL GALLONS OF MOTOR FUEL TRANSPORTED (Add Lines 1, 2 and 3)	4		74,387

CERTIFICATION

Name of Contact Person: _____

Phone Number: _____

Signature and Title: _____

Date: 06/27/2018

I certify that to the best of my knowledge, this return is accurate and complete.

Email Address: _____

Returns are due by the 22nd of the Next Month

If you have any questions or need assistance completing this return, email MotorFuelTax@dor.sc.gov or call this office at (803) 896-1990.

1350



42181014



STATE OF SOUTH CAROLINA
DEPARTMENT OF REVENUE

L-2185

4340

Motor Fuel Transporter Schedule of Deliveries

Transporter/Carrier Name Sleepy Oil	License Number 371000746	Month/Year 08/2018	Schedule Type : 14A
			Product Type : 065

SCHEDULE TYPE (CIRCLE ONE)

Schedule 14A - Total of all deliveries of fuels from a point inside South Carolina to a point outside South Carolina
Schedule 14B - Total of all deliveries of fuels from a point outside South Carolina to a point inside South Carolina
Schedule 14C - Total of all deliveries of fuels between two points in South Carolina

Mode

J = Truck
R = Rail
B = Barge
PL = Pipeline
S = Ship
BA = Book Adjustment
ST = Stock Transfer

PRODUCT TYPE (CIRCLE ONE AND ENTER % WHEN APPLICABLE)

065 Gasoline
122 Blend Components
125 Aviation Gasoline
E00 Fuel Grade
E01-E99 Gasohol (% _____)

072 Dyed Kerosene
130 Jet Fuel
142 Kerosene
167 Low Sulfur Undyed Diesel
226 High Sulfur Dyed Diesel
227 Low Sulfur Dyed Diesel
B00 Undyed Biodiesel (100%)

D00 Dyed Biodiesel (100%)
B01-B99 Undyed Biodiesel Blend (% _____)
D01-D99 Dyed Biodiesel Blend (% _____)
092 Other/Substitute Fuel (_____)

Person Hiring the Carrier						Delivered To:			(10) Date Delivered	(11) Document Number	(12) Gross Gallons	(13) Net Gallons
(1) Company Name	(2) Company FEIN	(3) Seller Name	(4) Seller FEIN	(5) Mode	(6) Origin	(7) Name	(8) Address	(9) FEIN				
RAINY DAY PETROLEUM	111444555	BOB GAS	123456789	J	SC	BOB GAS	,NC	123456789	08/11/2018	3016887	4,999	4,948
RAINY DAY PETROLEUM	111444555	BOB GAS	123456789	J	SC	BOB GAS	,NC	123456789	08/26/2018	302802	3,998	3,957
TOTAL											8,997	8,905

1350



42181016



STATE OF SOUTH CAROLINA
DEPARTMENT OF REVENUE

L-2185

4340

Motor Fuel Transporter Schedule of Deliveries

Transporter/Carrier Name Sleepy Oil	License Number 371000746	Month/Year 08/2018	Schedule Type : 14B
			Product Type : 167

SCHEDULE TYPE (CIRCLE ONE)

Schedule 14A - Total of all deliveries of fuels from a point inside South Carolina to a point outside South Carolina
Schedule 14B - Total of all deliveries of fuels from a point outside South Carolina to a point inside South Carolina
Schedule 14C - Total of all deliveries of fuels between two points in South Carolina

Mode

- J = Truck
- R = Rail
- B = Barge
- PL = Pipeline
- S = Ship
- BA = Book Adjustment
- ST = Stock Transfer

PRODUCT TYPE (CIRCLE ONE AND ENTER % WHEN APPLICABLE)

- | | | |
|-----------------------|------------------------------|--------------------------------------|
| 065 Gasoline | 072 Dyed Kerosene | D00 Dyed Biodiesel (100%) |
| 122 Blend Components | 130 Jet Fuel | B01-B99 Undyed Biodiesel Blend (%) |
| 125 Aviation Gasoline | 142 Kerosene | D01-D99 Dyed Biodiesel Blend (%) |
| E00 Fuel Grade | 167 Low Sulfur Undyed Diesel | 092 Other/Substitute Fuel (%) |
| Ethanol (100%) | 226 High Sulfur Dyed Diesel | |
| E01-E99 Gasohol (%) | 227 Low Sulfur Dyed Diesel | |
| | B00 Undyed Biodiesel (100%) | |

Person Hiring the Carrier						Delivered To:			(10) Date Delivered	(11) Document Number	(12) Gross Gallons	(13) Net Gallons
(1) Company Name	(2) Company FEIN	(3) Seller Name	(4) Seller FEIN	(5) Mode	(6) Origin	(7) Name	(8) Address	(9) FEIN				
RAINY DAY PETROLEUM	111444555	BOB GAS	123456789	J	NC	BOB GAS	,SC	123456789	08/18/2018	302141	7,504	7,428
TOTAL											7,504	7,428

1350



92181016



STATE OF SOUTH CAROLINA
DEPARTMENT OF REVENUE

L-2185

4340

Motor Fuel Transporter Schedule of Deliveries

Transporter/Carrier Name Sleepy Oil	License Number 371000746	Month/Year 08/2018	Schedule Type : 14B
			Product Type : 227

SCHEDULE TYPE (CIRCLE ONE)

Schedule 14A - Total of all deliveries of fuels from a point inside South Carolina to a point outside South Carolina
Schedule 14B - Total of all deliveries of fuels from a point outside South Carolina to a point inside South Carolina
Schedule 14C - Total of all deliveries of fuels between two points in South Carolina

Mode

J = Truck
R = Rail
B = Barge
PL = Pipeline
S = Ship
BA = Book Adjustment
ST = Stock Transfer

PRODUCT TYPE (CIRCLE ONE AND ENTER % WHEN APPLICABLE)

065 Gasoline	072 Dyed Kerosene	D00 Dyed Biodiesel (100%)
122 Blend Components	130 Jet Fuel	B01-B99 Undyed Biodiesel Blend (%)
125 Aviation Gasoline	142 Kerosene	D01-D99 Dyed Biodiesel Blend (%)
E00 Fuel Grade	167 Low Sulfur Undyed Diesel	092 Other/Substitute Fuel ()
Ethanol (100%)	226 High Sulfur Dyed Diesel	
E01-E99 Gasohol (%)	227 Low Sulfur Dyed Diesel	
	B00 Undyed Biodiesel (100%)	

Person Hiring the Carrier						Delivered To:			(10) Date Delivered	(11) Document Number	(12) Gross Gallons	(13) Net Gallons
(1) Company Name	(2) Company FEIN	(3) Seller Name	(4) Seller FEIN	(5) Mode	(6) Origin	(7) Name	(8) Address	(9) FEIN				
RAINY DAY PETROLEUM	111444555	BOB GAS	123456789	J	NC	BOB GAS	,SC	123456789	08/11/2018	301687	4,999	4,948
RAINY DAY PETROLEUM	111444555	BOB GAS	123456789	J	NC	BOB GAS	,SC	123456789	08/26/2018	302802	3,998	3,957
TOTAL											8,997	8,905

1350



92181016



STATE OF SOUTH CAROLINA
DEPARTMENT OF REVENUE

L-2185

4340

Motor Fuel Transporter Schedule of Deliveries

Transporter/Carrier Name Sleepy Oil	License Number 371000746	Month/Year 08/2018	Schedule Type : 14C
			Product Type : 065

SCHEDULE TYPE (CIRCLE ONE)

Schedule 14A - Total of all deliveries of fuels from a point inside South Carolina to a point outside South Carolina
Schedule 14B - Total of all deliveries of fuels from a point outside South Carolina to a point inside South Carolina
Schedule 14C - Total of all deliveries of fuels between two points in South Carolina

Mode

J = Truck
R = Rail
B = Barge
PL = Pipeline
S = Ship
BA = Book Adjustment
ST = Stock Transfer

PRODUCT TYPE (CIRCLE ONE AND ENTER % WHEN APPLICABLE)

065 Gasoline
122 Blend Components
125 Aviation Gasoline
E00 Fuel Grade
E01-E99 Gasohol (% _____)

072 Dyed Kerosene
130 Jet Fuel
142 Kerosene
167 Low Sulfur Undyed Diesel
226 High Sulfur Dyed Diesel
227 Low Sulfur Dyed Diesel
B00 Undyed Biodiesel (100%)

D00 Dyed Biodiesel (100%)
B01-B99 Undyed Biodiesel Blend (% _____)
D01-D99 Dyed Biodiesel Blend (% _____)
092 Other/Substitute Fuel (_____)

Person Hiring the Carrier						Delivered To:			(10) Date Delivered	(11) Document Number	(12) Gross Gallons	(13) Net Gallons
(1) Company Name	(2) Company FEIN	(3) Seller Name	(4) Seller FEIN	(5) Mode	(6) Origin	(7) Name	(8) Address	(9) FEIN				
RAINY DAY PETROLEUM	111444555	BOB GAS	123456789	J	SC	BOB GAS	,SC	123456789	08/12/2018	458966	4,001	3,960
RAINY DAY PETROLEUM	111444555	BOB GAS	123456789	J	SC	BOB GAS	,SC	123456789	08/26/2018	302802	4,801	4,749
TOTAL										8,802	8,709	

Transporter Report (CCR)– No Activity (Zero Return)

ISA~00~ ~00~ ~ZZ~111222555 ~ZZ~SCDOR
 ~180923~1431~|~00403~000003003~0~T~^\
 GS~TF~111222555~SCDOR~20190623~143118~3003~X~004030\
 ST~813~3003~2\
 BTI~T6~050~47~SCDOR~20180923~SLEE~24~111222555~49~371000746~SV~SCMFUEL0602~00\
 DTM~194~20180930\
 TIA~5001~0~0~GA\
 N1~TP~SLEEPY OIL\
 N3~123 WAKE UP ROAD\
 N4~COLUMBIA~SC~29123~US\
 PER~CN~TRACI BULLOCK~TE~8038961748~FX~8038961779~EM~TBULLOCK@SCDOR.US\
 PER~EA~TRACI BULLOCK~TE~8038961748~FX~8038961779~EM~TBULLOCK@SCDOR.US\
 N1~31~SLEEPY OIL\
 N3~123 WAKE UP ROAD\
 N4~COLUMBIA~SC~29123~US\
 TFS~T2~CCR\
 REF~55~1\
 REF~BE~1\
 SE~16~3003\
 GE~1~3003\
 IEA~1~000003003\
 SE~16~3003\
 GE~1~3003\
 IEA~1~000003003\
 'No Activity'

1350



Original
1817800002

dor.sc.gov



STATE OF SOUTH CAROLINA
DEPARTMENT OF REVENUE

MOTOR FUEL TRANSPORTER MONTHLY RETURN

L-2176

4330

Amended Return

NAME AND ADDRESS

Sleepy Oil
123 Wake Up Rd

Columbia, 29123

License Number

371000746

FEIN

111222555

Month/Year

09/2018

Gallon Information

1. Total of all deliveries of fuels from a point inside South Carolina to a point outside South Carolina (Schedule 14A)	1	▶	0
2. Total of all deliveries of fuels from a point outside South Carolina to a point inside South Carolina (Schedule 14B)	2	▶	0
3. Total of all deliveries of fuels between two points in South Carolina (Schedule 14C)	3	▶	0
4. TOTAL GALLONS OF MOTOR FUEL TRANSPORTED (Add Lines 1, 2 and 3)	4		0

CERTIFICATION

Name of Contact Person: _____

Phone Number: _____

Signature and Title: _____

Date: 06/27/2018

I certify that to the best of my knowledge, this return is accurate and complete.

Email Address: _____

Returns are due by the 22nd of the Next Month

If you have any questions or need assistance completing this return, email MotorFuelTax@dor.sc.gov or call this office at (803) 896-1990.